

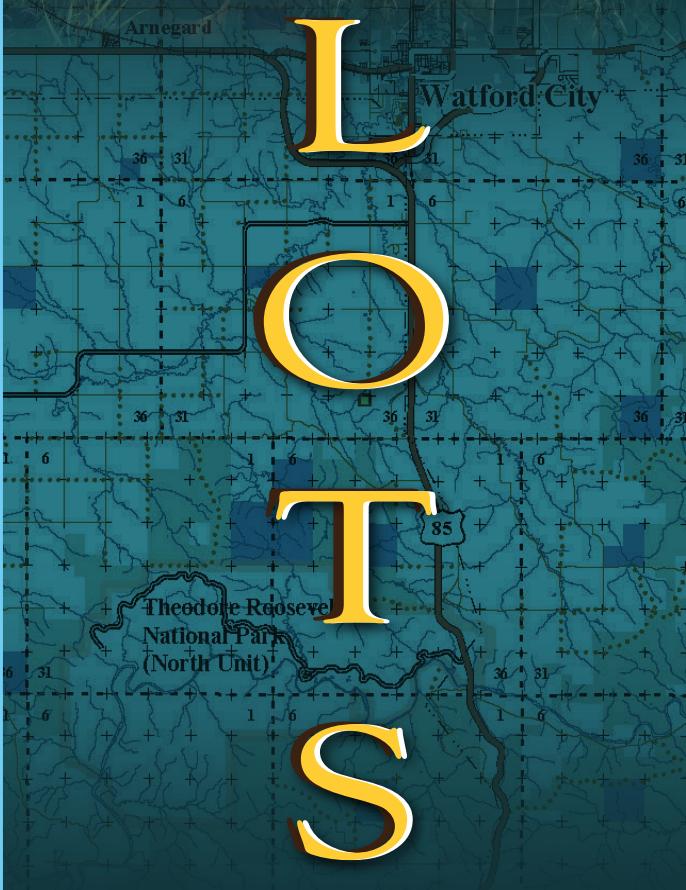
P

L

O

T

S



## What is PLOTS?

The North Dakota Game and Fish Department's mission is to protect, conserve and enhance fish and wildlife populations and their habitats for sustained consumptive and nonconsumptive use.

The Private Land Initiative is the primary mechanism for applying this mission onto the private landscape of North Dakota. The PLI has three main goals:

- Conservation of habitats for fish and wildlife populations.
- Provide landowners interested in wildlife conservation with cost-share assistance for developing and protecting wildlife habitat.
- Provide public opportunities to access fish and wildlife resources on private land.

Private Land Open To Sportsmen is a component of the Department's Private Land Initiative.

PLOTS IS AN AGREEMENT BETWEEN THE PRIVATE LANDOWNER AND GAME AND FISH, WHICH ALLOWS WALK-IN PUBLIC ACCESS FOR HUNTING ON PRIVATE LAND.

MORE THAN 93 PERCENT OF LAND IN NORTH DAKOTA IS HELD IN PRIVATE OWNERSHIP.

## Why is PLOTS important?

It is important for the Department to work with private landowners to manage wildlife and provide habitat and access. Access to private land is necessary to ensure hunter retention and to welcome the next generation of hunters.

## How is PLOTS funded?

PLOTS is funded by hunters. In 1997, the passing of HB1395 created the Private Land Habitat and Access Improvement Fund, which is funded by sales of hunting licenses and interest accrued from the Department's general fund balance.

NO STATE TAX DOLLARS ARE USED TO FUND THE PLOTS PROGRAM.

## Treat PLOTS tracts as if they were your own

- Remove all trash and empty shells.
- Do not block field approaches or gates with vehicles.
- Clean game well away from ditches and approaches.
- Steer clear of livestock.
- Report illegal acts – Report All Poachers –701-328-9921.



**PLOTS**  
are private lands.  
Please ENJOY this opportunity  
and RESPECT the land as if it were your own.

**NORTH DAKOTA GAME AND FISH DEPARTMENT**

100 N. Bismarck Expressway  
Bismarck, North Dakota 58501  
701-328-6300  
[www.gf.nd.gov](http://www.gf.nd.gov)

