

Bisbee Dam - Big Coulee -

Towner County

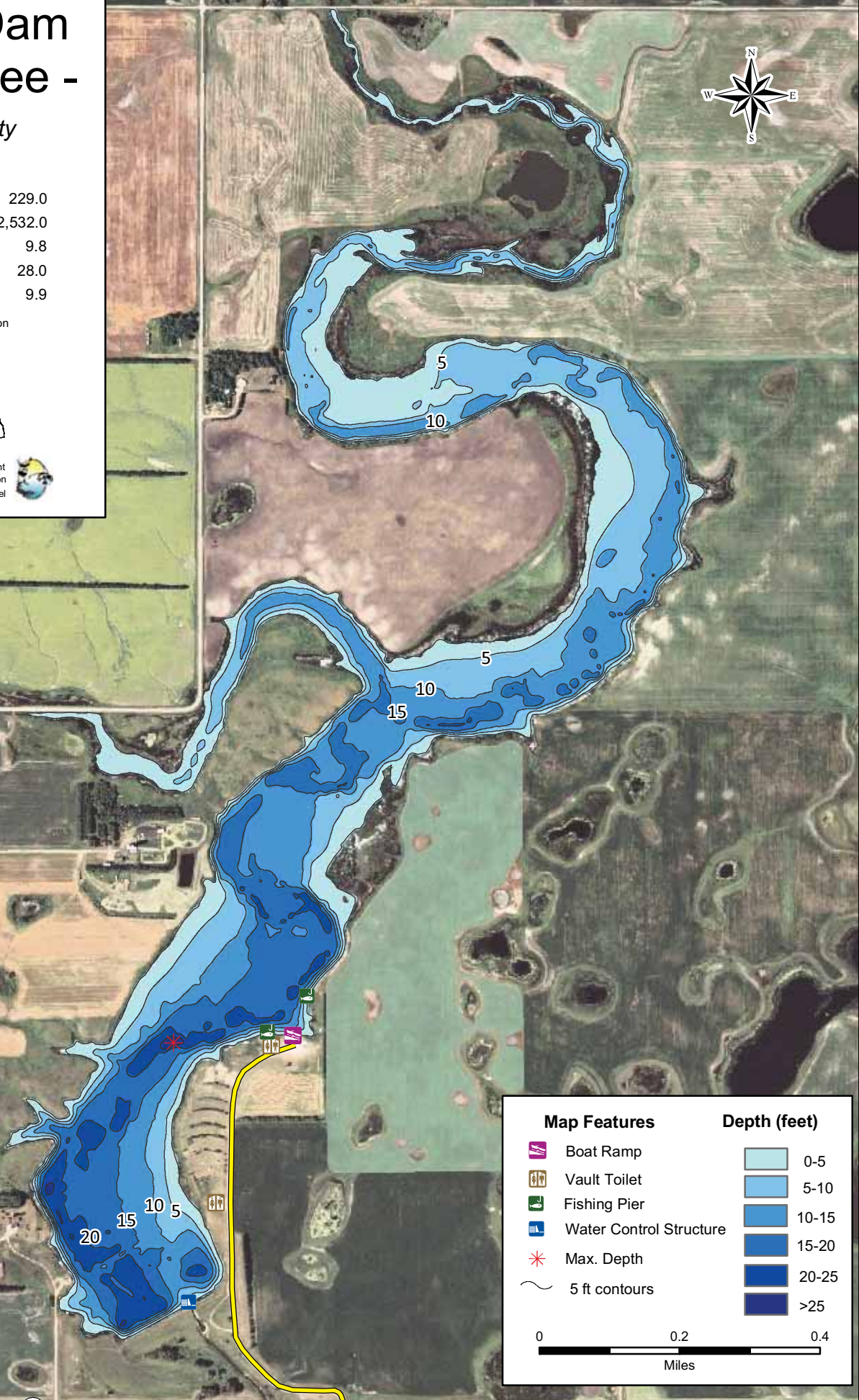
Lake Statistics

Surface Area (acres)	229.0
Volume (acre/feet)	22,532.0
Average Depth (feet)	9.8
Max Depth (feet)	28.0
Shoreline (miles)	9.9

** Based on Full Pool Elevation



North Dakota Game and Fish Department
2008-09 Fisheries Division
NDGF-GIS-2308350 - Weigel



Map Features		Depth (feet)	
	Boat Ramp		0-5
	Vault Toilet		5-10
	Fishing Pier		10-15
	Water Control Structure		15-20
	Max. Depth		20-25
	5 ft contours		25-30
		>30 depth color swatch"/>	>30

0 0.2 0.4
Miles

1 mi E of Bisbee

