

Clausen Springs Dam

Barnes County

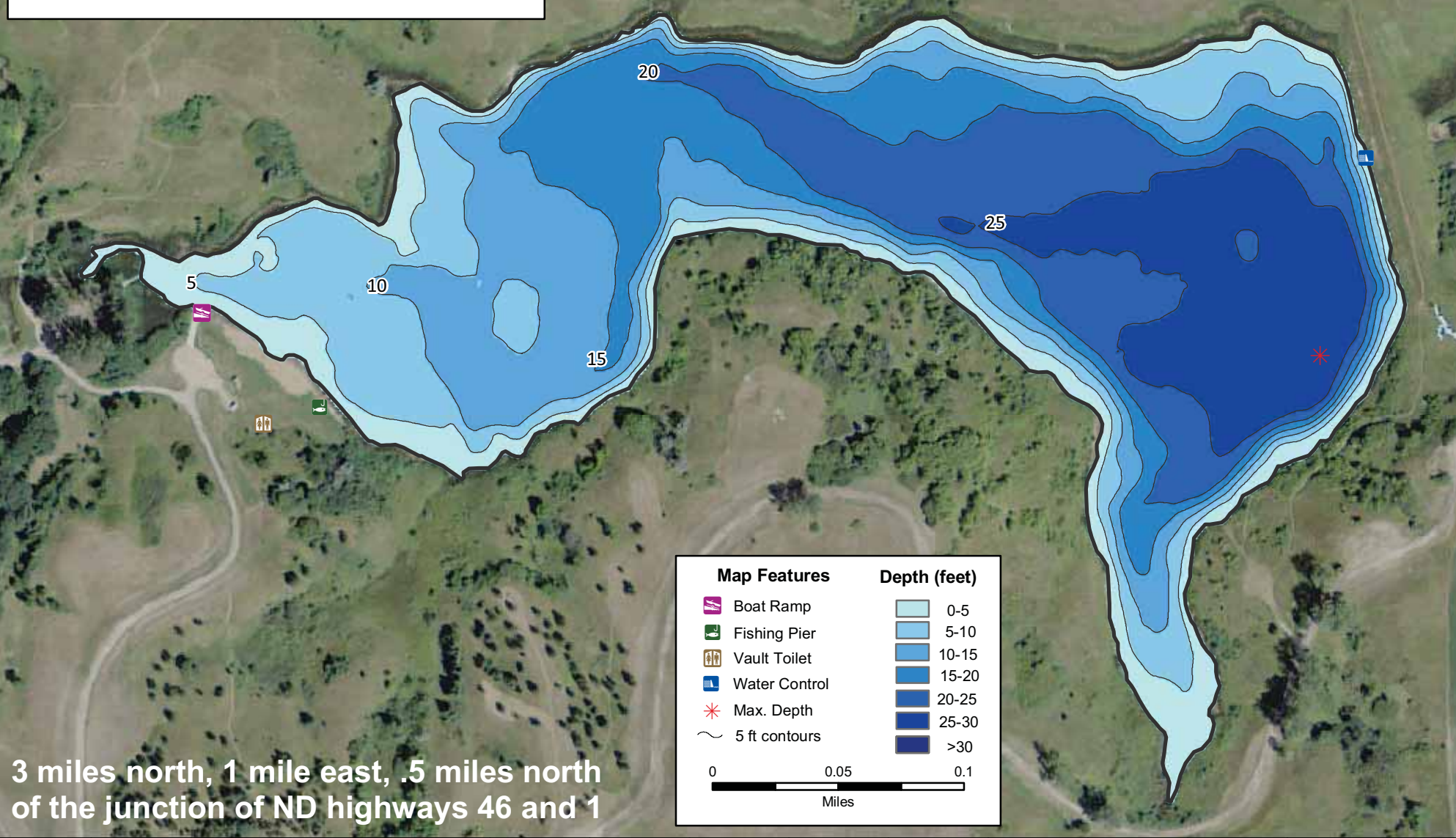
Lake Statistics

Surface Area (acres)	37.9
Volume (acre/feet)	562.7
Average Depth (feet)	14.8
Max Depth (feet)	30.0
Shoreline (miles)	1.7

** Based on Full Pool Elevation



North Dakota Game and Fish Department
2009-10 Fisheries Division
NDGF-GIS-2309051 - Weigel



3 miles north, 1 mile east, .5 miles north
of the junction of ND highways 46 and 1

Map Features

- Boat Ramp
- Fishing Pier
- Vault Toilet
- Water Control
- Max. Depth
- 5 ft contours

Depth (feet)

- 0-5
- 5-10
- 10-15
- 15-20
- 20-25
- 25-30
- >30

