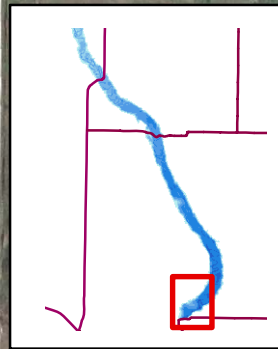


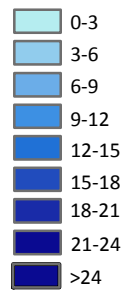
LAKE DARLING

- Dam Area Inset -

Renville County



Depth (feet)



- * Max. Depth
- ~ 3 ft contours
- ** Based on Full Pool Elevation

Map Features

- Boat Ramp
- Fishing Pier
- Vault Toilet
- Water Control Structure

Landing #2

Landing #3

Landing #1

Spillway Ramp

North Dakota Game and Fish Department
2007-08 Fisheries Division
NDGF-GIS-2307285 - Weigel

