

Larimore Dam

Grand Forks County

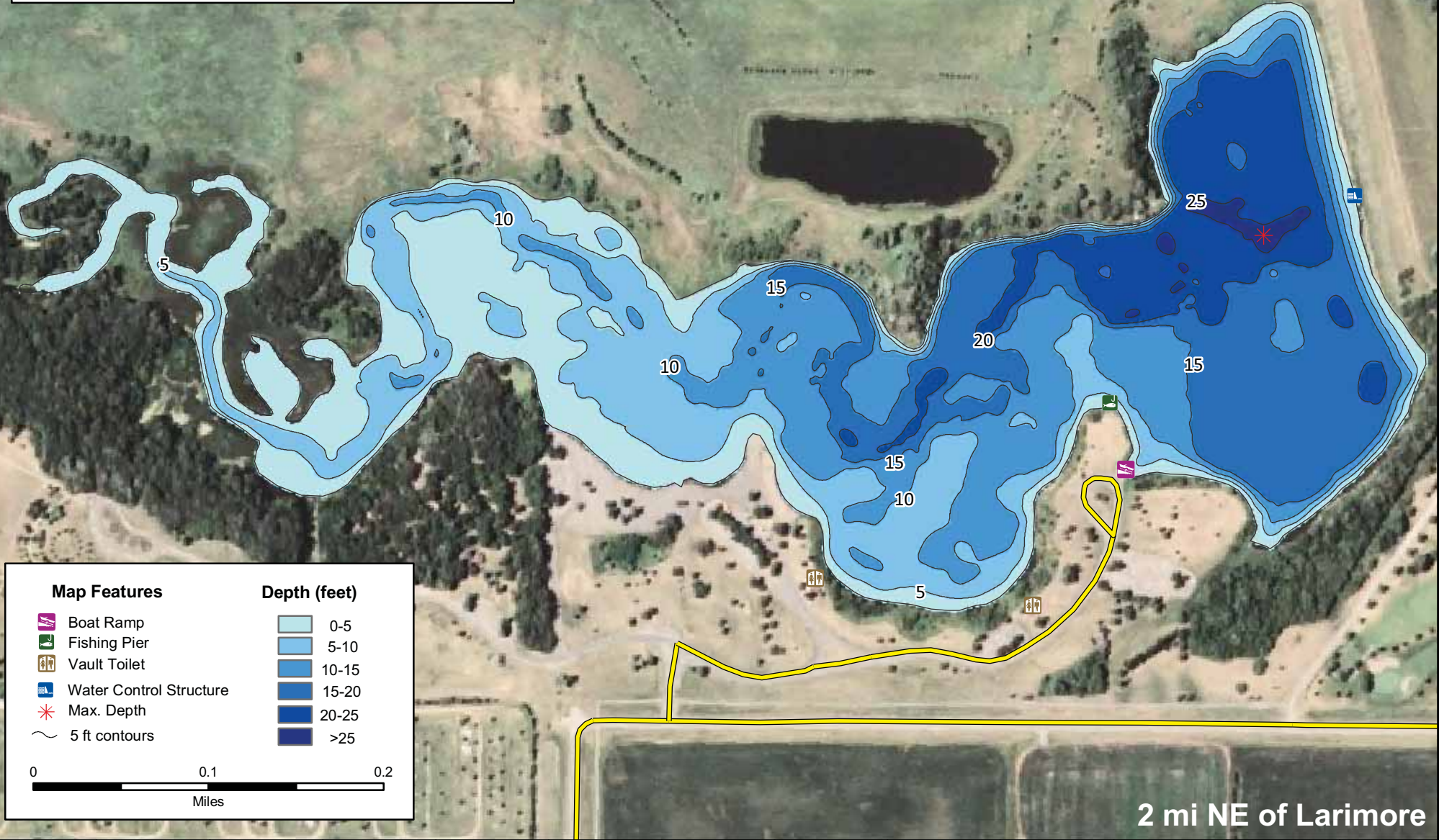
Lake Statistics

Surface Area (acres)	66.7
Volume (acre/feet)	746.3
Average Depth (feet)	11.1
Max Depth (feet)	28.1
Shoreline (miles)	3.3



North Dakota Game and Fish Department
2008-09 Fisheries Division
NDGF-GIS-2308154 - Weigel

** Based on Full Pool Elevation

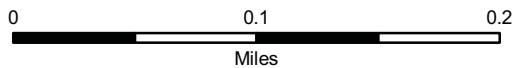


Map Features

- Boat Ramp
- Fishing Pier
- Vault Toilet
- Water Control Structure
- Max. Depth
- 5 ft contours

Depth (feet)

	0-5
	5-10
	10-15
	15-20
	20-25
	>25



2 mi NE of Larimore