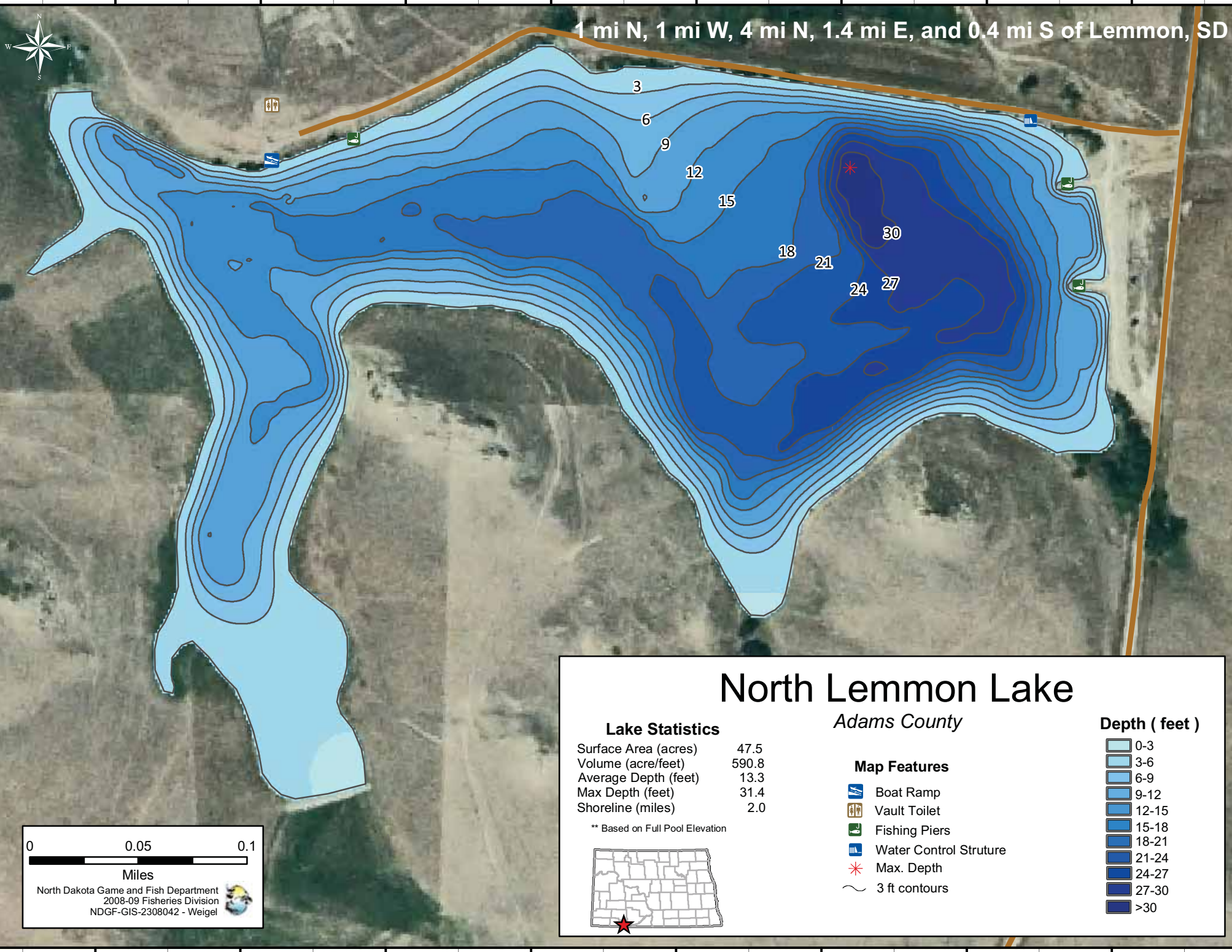


1 mi N, 1 mi W, 4 mi N, 1.4 mi E, and 0.4 mi S of Lemmon, SD



North Lemmon Lake

Adams County

Lake Statistics	
Surface Area (acres)	47.5
Volume (acre/feet)	590.8
Average Depth (feet)	13.3
Max Depth (feet)	31.4
Shoreline (miles)	2.0

** Based on Full Pool Elevation

Map Features	
	Boat Ramp
	Vault Toilet
	Fishing Piers
	Water Control Structure
	Max. Depth
	3 ft contours

Depth (feet)	
	0-3
	3-6
	6-9
	9-12
	12-15
	15-18
	18-21
	21-24
	24-27
	27-30
>30 depth color swatch"/>	>30

0 0.05 0.1
Miles
North Dakota Game and Fish Department
2008-09 Fisheries Division
NDGF-GIS-2308042 - Weigel