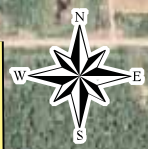


100°16'15"W 100°16'0"W 100°15'45"W 100°15'30"W 100°15'15"W 100°15'0"W 100°14'45"W 100°14'30"W

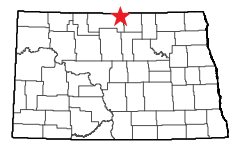


Long Lake

Bottineau County

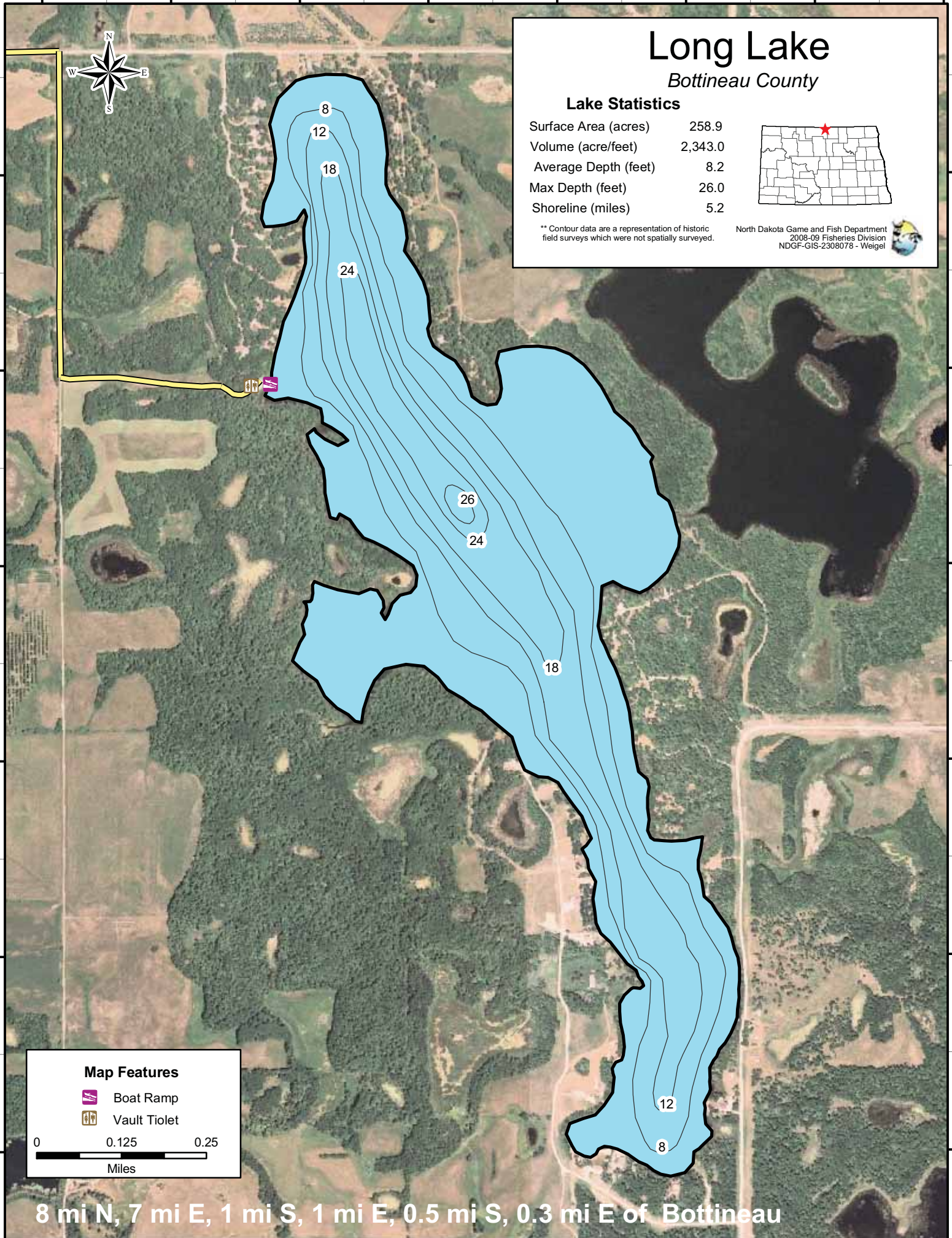
Lake Statistics

Surface Area (acres)	258.9
Volume (acre/feet)	2,343.0
Average Depth (feet)	8.2
Max Depth (feet)	26.0
Shoreline (miles)	5.2





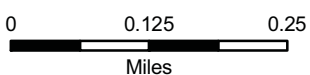
** Contour data are a representation of historic field surveys which were not spatially surveyed.

North Dakota Game and Fish Department
2008-09 Fisheries Division
NDGF-GIS-2308078 - Weigel



Map Features

-  Boat Ramp
-  Vault Toilet



8 mi N, 7 mi E, 1 mi S, 1 mi E, 0.5 mi S, 0.3 mi E of Bottineau

100°16'15"W 100°16'0"W 100°15'45"W 100°15'30"W 100°15'15"W 100°15'0"W 100°14'45"W 100°14'30"W

48°56'0"N
48°55'45"N
48°55'30"N
48°55'15"N
48°55'0"N
48°54'45"N

48°56'0"N
48°55'45"N
48°55'30"N
48°55'15"N
48°55'0"N
48°54'45"N