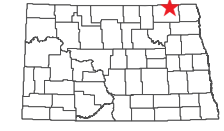


# Mount Carmel Dam

Cavalier County

### Lake Statistics

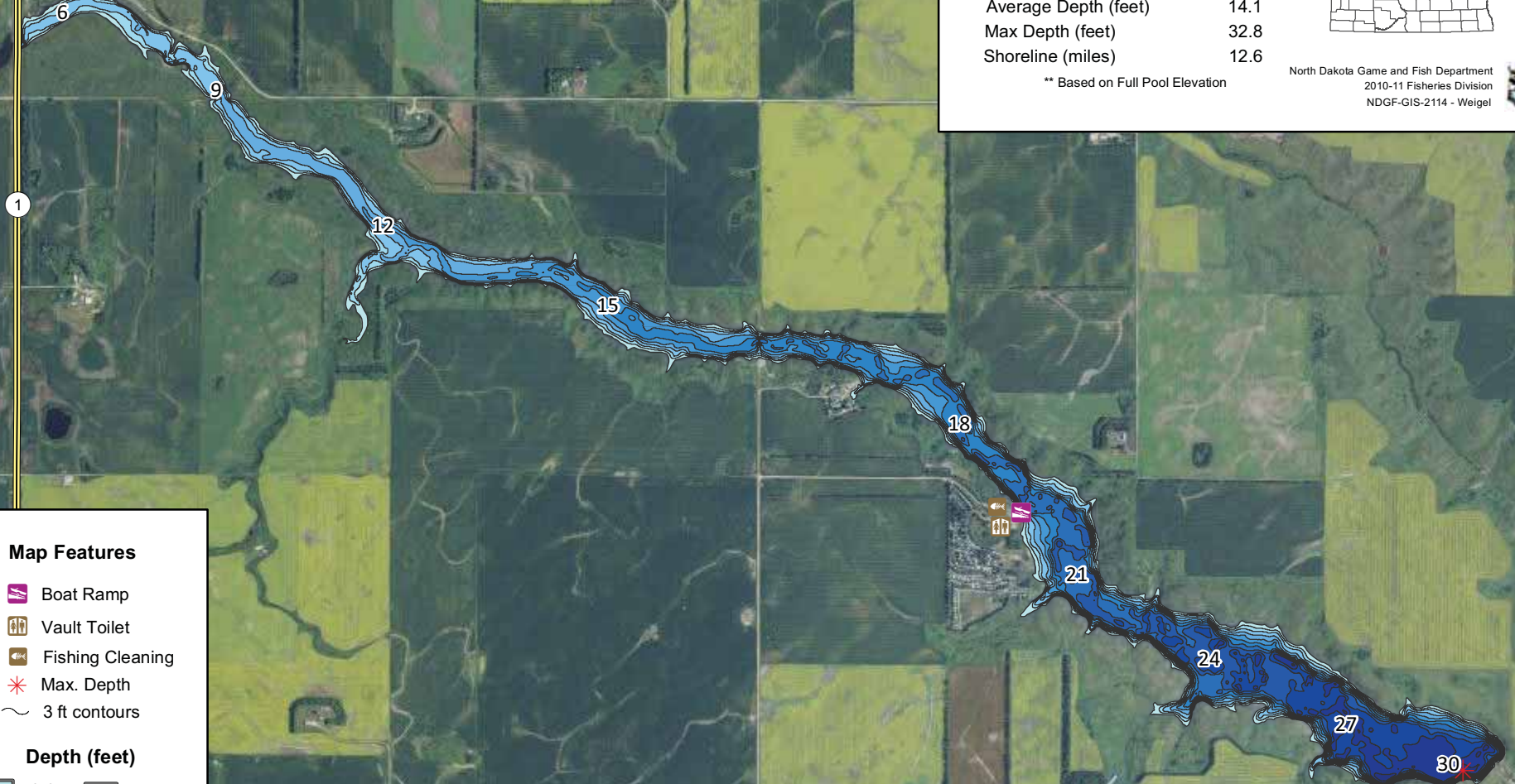
|                      |         |
|----------------------|---------|
| Surface Area (acres) | 342.1   |
| Volume (acre/feet)   | 4,781.8 |
| Average Depth (feet) | 14.1    |
| Max Depth (feet)     | 32.8    |
| Shoreline (miles)    | 12.6    |



North Dakota Game and Fish Department  
2010-11 Fisheries Division  
NDGF-GIS-2114 - Weigel



\*\* Based on Full Pool Elevation

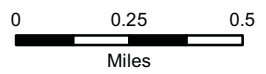


### Map Features

- Boat Ramp
- Vault Toilet
- Fishing Cleaning
- Max. Depth
- 3 ft contours

### Depth (feet)

|  |       |                        |       |
|--|-------|------------------------|-------|
|  | 0-3   |                        | 18-21 |
|  | 3-6   |                        | 21-24 |
|  | 6-9   |                        | 24-27 |
|  | 9-12  |                        | 27-30 |
|  | 12-15 | >30 ft depth swatch"/> | >30   |
|  | 15-18 |                        |       |



9 miles north, 2 miles east, 2 miles north of Langdon