



STUMP LAKE

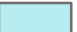













- Southwest Inset -
Nelson County

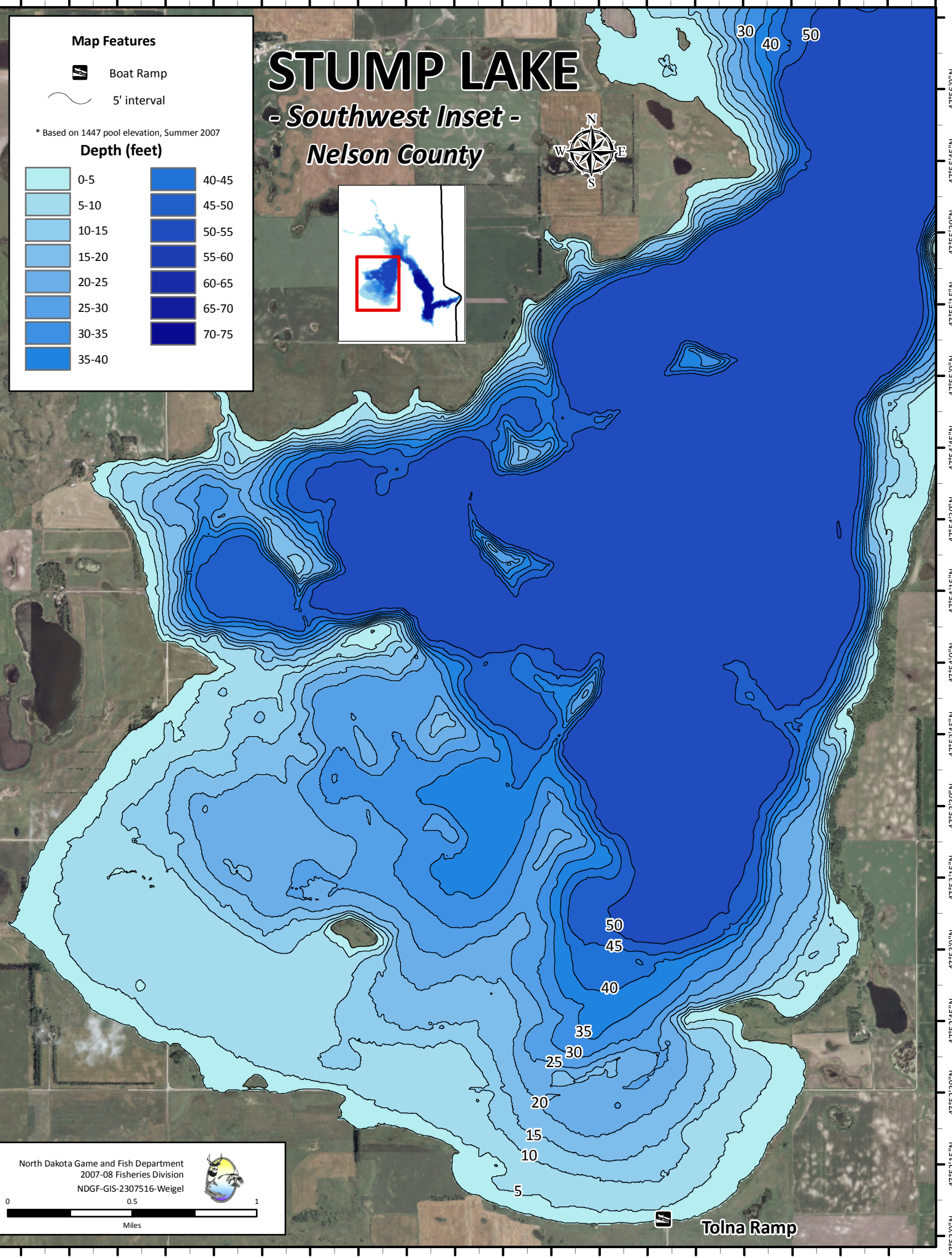
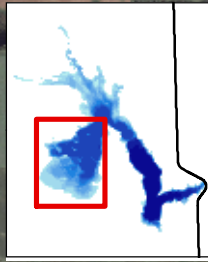
Map Features

-  Boat Ramp
-  5' interval

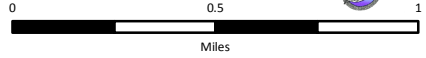
* Based on 1447 pool elevation, Summer 2007


Depth (feet)

	0-5		40-45
	5-10		45-50
	10-15		50-55
	15-20		55-60
	20-25		60-65
	25-30		65-70
	30-35		70-75
	35-40		



North Dakota Game and Fish Department
2007-08 Fisheries Division
NDGF-GIS-2307516-Weigel



 Tolna Ramp