

# Wood Lake

## Benson County

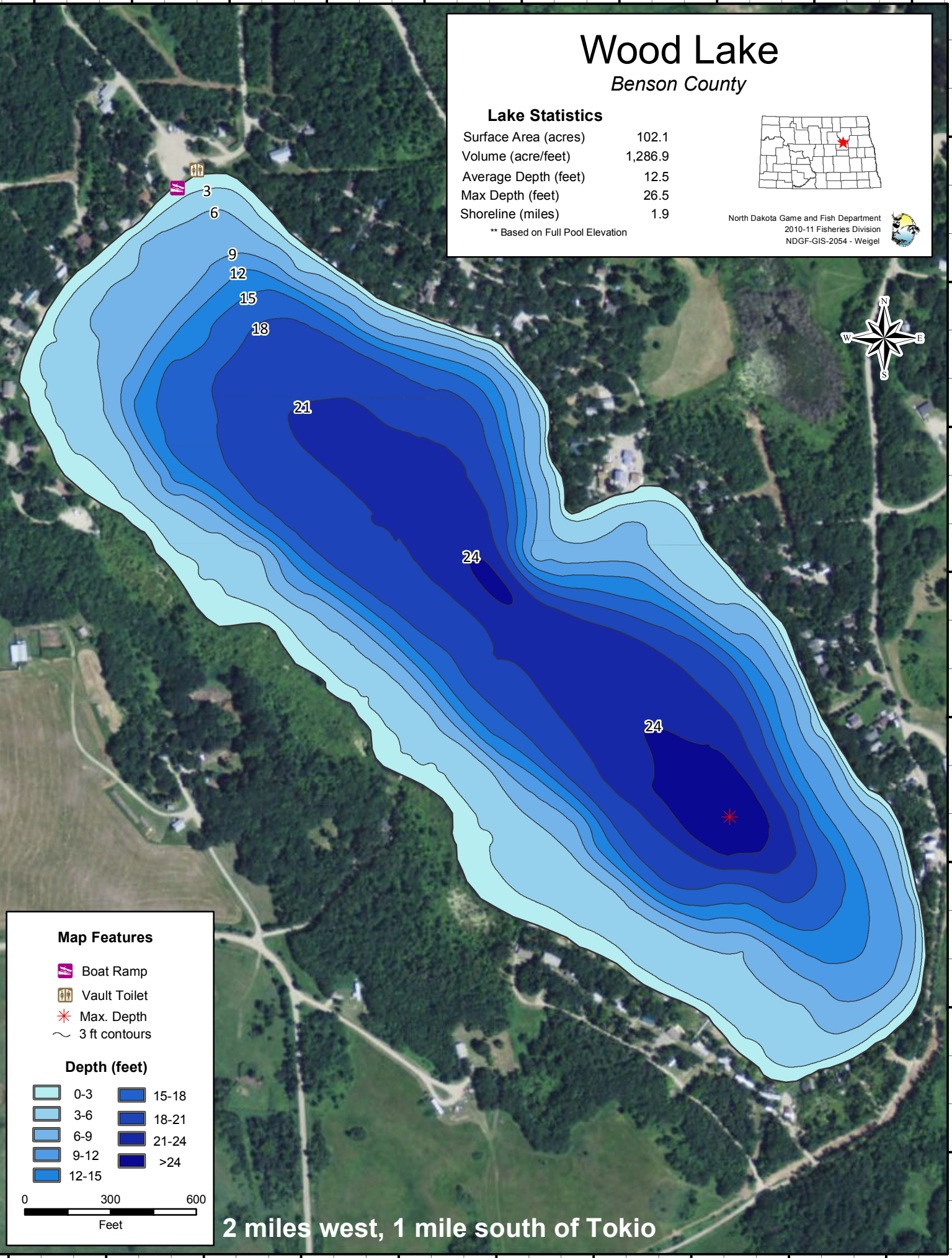
### Lake Statistics

Surface Area (acres)	102.1
Volume (acre/feet)	1,286.9
Average Depth (feet)	12.5
Max Depth (feet)	26.5
Shoreline (miles)	1.9

\*\* Based on Full Pool Elevation



North Dakota Game and Fish Department  
2010-11 Fisheries Division  
NDGF-GIS-2054 - Weigel

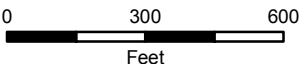


### Map Features

- Boat Ramp
- Vault Toilet
- Max. Depth
- 3 ft contours

### Depth (feet)

	0-3		15-18
	3-6		18-21
	6-9		21-24
	9-12		>24
	12-15		



2 miles west, 1 mile south of Tokio