

# MISSOURI RIVER SYSTEM BOATING ACCESS

Following is a list of boating access sites on the Missouri River System in North Dakota. All sites have a boat ramp, courtesy dock, and restrooms unless otherwise noted. **Due to low water conditions, access at many of these sites will not be available. Check the North Dakota Game and Fish Department's website ([gf.nd.gov](http://gf.nd.gov)) for updated access information or contact the appropriate managing authority (found in parenthesis at the end of each listing) for boating access status.**

**1. SUNDHEIM PARK** – 2 miles west of Cartwright on ND Highway 200, west side of Yellowstone River and on the south side of ND Highway 200. (No courtesy docks, paved access road, primitive camping, security lights, picnic shelter – McKenzie County Park Board).

**2. CONFLUENCE AREA** – 1 1/2 miles south of Buford on ND Highway 1804. (Paved access road, primitive camping, security lights, picnic shelter, trash receptacles – Williams County WRD).

**3. LEWIS AND CLARK BRIDGE** – 4 miles west of Williston on U.S. Highway 2, then 3 miles south on U.S. Highway 85, on south side of Missouri River, and on east side of U.S. Highway 85. (No courtesy docks, paved access road, primitive camping, picnic shelter – Missouri River Anglers Association).

**4. AMERICAN LEGION PARK (RAUMS)** – 4 miles west of Williston on U.S. Highway 2, then 6 miles south on U.S. Highway 85, then 4 miles east. (No courtesy docks, gravel access road, fish cleaning facility, developed camping, security lights, picnic shelter, trash receptacles – American Legion Post 37).

**5. LEWIS AND CLARK STATE PARK** – 16 miles east of Williston on ND Highway 1804, then 3 miles south. (Paved access road, fish cleaning facility, developed and primitive camping, security lights, picnic shelter, trash receptacles, concession, lodging, access fee, telephone, RV dump station – North Dakota Parks and Recreation).

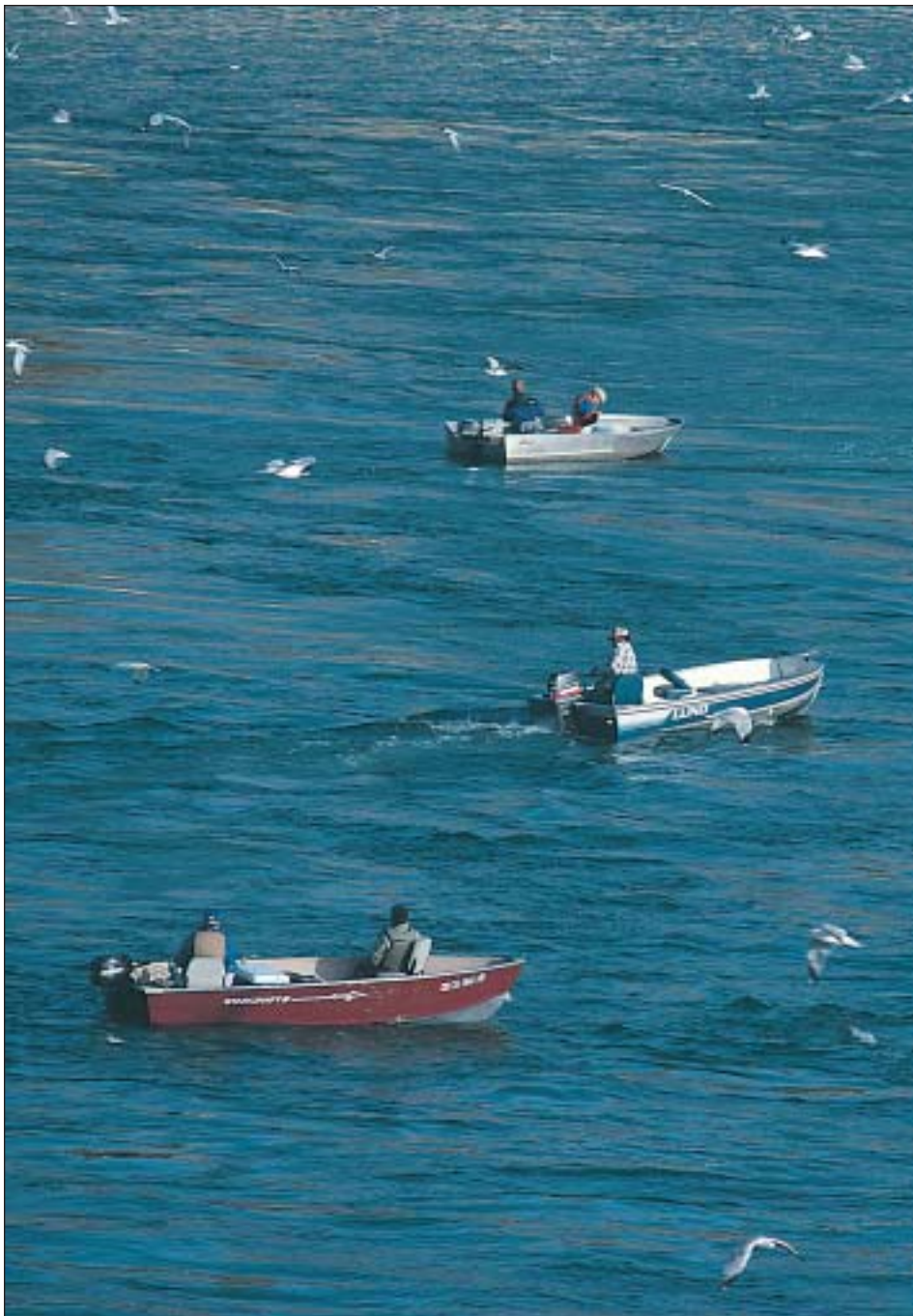
**6. WHITETAIL BAY (LUNDS LANDING)** – 22 miles east of Williston on ND Highway 1804. (Paved access road, developed camping, security lights, picnic shelter, trash receptacles, concession, lodging, boat rental, telephone – Williams County WRD).

**7. TOBACCO GARDEN CREEK BAY** – 2 miles east of Watford City on ND Highway 23, then 25 miles north and east on ND Highway 1806. (Paved access road, fish cleaning facility, developed and primitive camping, security lights, picnic shelter, trash receptacles, concession, lodging, telephone, RV dump station – McKenzie County Park Board).

**8. LITTLE BEAVER BAY** – About 32 miles northwest of New Town on ND Highway 1804, then 3 miles south. (Gravel access road, developed and primitive camping, security lights, picnic shelter, trash receptacles – Williams County WRD).

**9. WHITE EARTH BAY** – About 28 miles northwest of New Town on ND Highway 1804, then 2 miles south, 1 mile east, 3 miles south and 3 miles east. (Gravel access road, fish cleaning facility, developed and primitive camping, security lights, picnic shelter, trash receptacles, concession, telephone, RV dump station – Mountrail County Park Board).

**10. SANISH BAY (AFTEM)** – 1 mile north and 2 miles west of New Town. (No restrooms, gravel access road – New Town Park Board/Aftem Development).



HAROLD LUMBER





**39. SANGER (CROSS RANCH)** – Just east of Sanger townsite on west side of Missouri River. (No courtesy docks, gravel access road, primitive camping, picnic shelter, trash receptacles, access fee – North Dakota Parks and Recreation).

**40. STECKEL BOAT LANDING (WILTON)** – 22 miles north of Bismarck on ND Highway 1804 or 5 1/2 miles west, 1 mile south and 1 1/2 miles west of junction of U.S. Highway 83 and ND Highway 36. (Paved access road, primitive camping, picnic shelter, trash receptacles – Burleigh County Park Board).

**41. MISTY WATERS (UNDER CONSTRUCTION)** – On east side of Missouri River near Bismarck, 3 miles north of Interstate 94 bridge on River Road, then 1 mile west. (No restrooms, no courtesy docks, paved access road – Burleigh County Park Board).

**42. GRANT MARSH BRIDGE** – On east side of Missouri River near Bismarck, 1/8 mile south of Interstate 94 bridge on River Road. (Paved access road, trash receptacles, telephone – Bismarck Parks and Recreation).

**43. FOX ISLAND PARK** – From Washington Street, 3/4 mile west on Riverwood Drive (1 block south of Expressway), 1 1/2 miles south and 1/2 mile west. Heavy pleasure boat use in summer. (Paved access road, fish cleaning facility, security lights, trash receptacles – Bismarck Parks and Recreation).

**44. GENERAL SIBLEY PARK** – South of Bismarck on Washington Street. Ramp may present problems for large boats when river is low. (No courtesy docks, paved access road, developed and primitive camping, security lights, picnic shelter, trash receptacles, RV dump station – Bismarck Parks and Recreation).

**45. LITTLE HEART BOTTOMS (SCHMIDT)** – 11 miles south of Mandan on ND Highway 1806, then 1 mile north. (Paved access road, trash receptacles – Morton County Park Board).

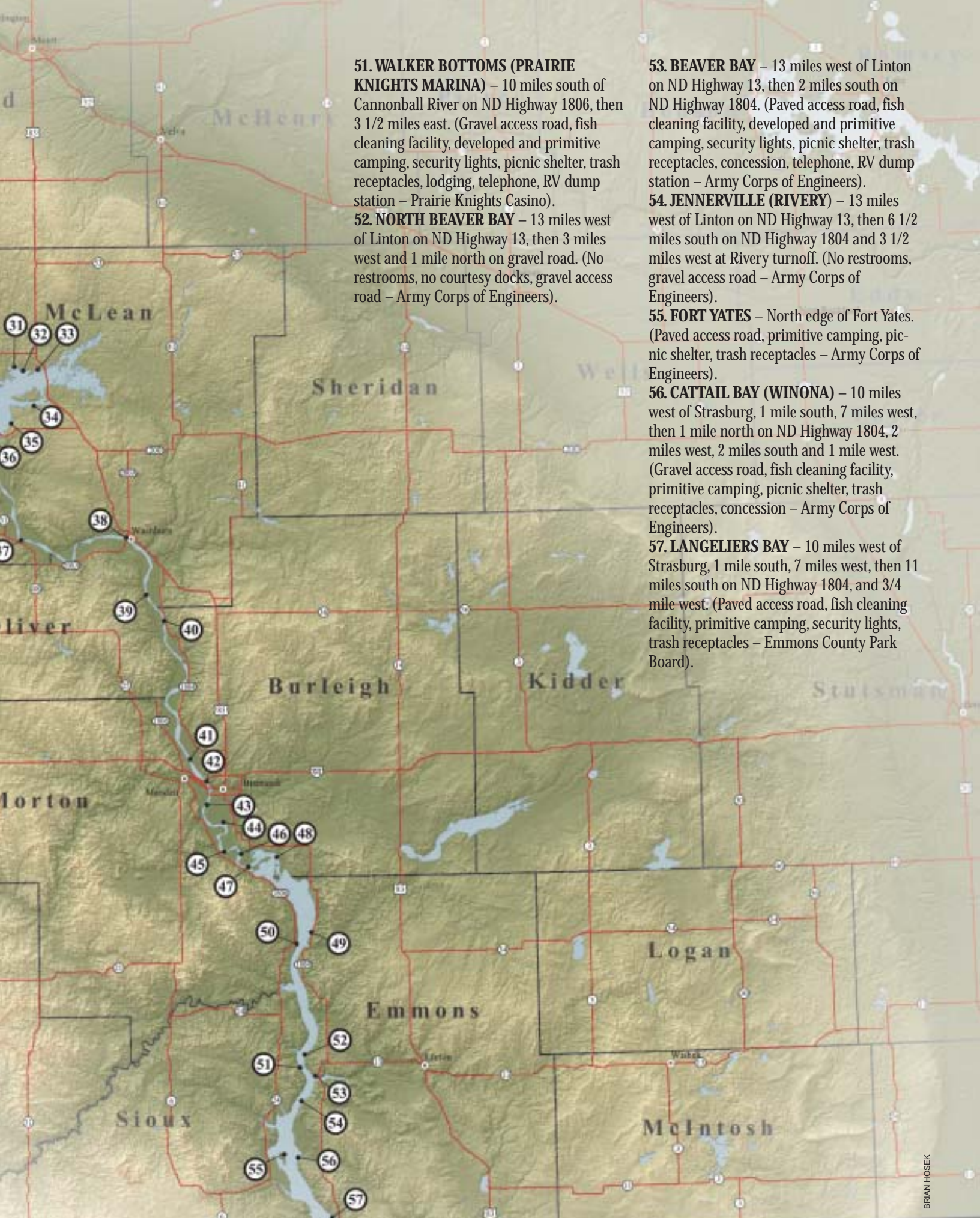
**46. KIMBALL BOTTOMS (DESERT)** – 8 miles south of Bismarck on ND Highway 1804, then 2 miles south. (Paved access road, primitive camping, picnic shelter, trash receptacles – Burleigh County Park Board).

**47. GRANER BOTTOMS (SUGAR LOAF)** – 19 miles south of Mandan on ND Highway 1806, then 1 mile east, or about 3 miles north of Huff. (Paved access road, fish cleaning facility, developed and primitive camping, security lights, picnic shelter, trash receptacles, RV dump station – Morton County Park Board).

**48. MACLEAN BOTTOMS (GUN RANGE)** – 14 miles south of Bismarck on ND Highway 1804, then 2 miles south. (Paved access road, primitive camping, security lights, picnic shelter, trash receptacles – Burleigh County Park Board).

**49. HAZELTON** – 31 miles southeast of Bismarck on ND Highway 1804 or 13 miles west and 2 miles north of Hazelton. Campground located just south of boat ramp. (Paved access road, primitive camping, security lights, picnic shelter, trash receptacles – Army Corps of Engineers).

**50. FORT RICE** – 28 miles south of Mandan on ND Highway 1806, then 1/2 mile east. (Paved access road, fish cleaning facility, primitive camping, security lights, trash receptacles – Morton County Park Board).



**51. WALKER BOTTOMS (PRAIRIE KNIGHTS MARINA)** – 10 miles south of Cannonball River on ND Highway 1806, then 3 1/2 miles east. (Gravel access road, fish cleaning facility, developed and primitive camping, security lights, picnic shelter, trash receptacles, lodging, telephone, RV dump station – Prairie Knights Casino).

**52. NORTH BEAVER BAY** – 13 miles west of Linton on ND Highway 13, then 3 miles west and 1 mile north on gravel road. (No restrooms, no courtesy docks, gravel access road – Army Corps of Engineers).

**53. BEAVER BAY** – 13 miles west of Linton on ND Highway 13, then 2 miles south on ND Highway 1804. (Paved access road, fish cleaning facility, developed and primitive camping, security lights, picnic shelter, trash receptacles, concession, telephone, RV dump station – Army Corps of Engineers).

**54. JENNERVILLE (RIVERY)** – 13 miles west of Linton on ND Highway 13, then 6 1/2 miles south on ND Highway 1804 and 3 1/2 miles west at Rivery turnoff. (No restrooms, gravel access road – Army Corps of Engineers).

**55. FORT YATES** – North edge of Fort Yates. (Paved access road, primitive camping, picnic shelter, trash receptacles – Army Corps of Engineers).

**56. CATTAIL BAY (WINONA)** – 10 miles west of Strasburg, 1 mile south, 7 miles west, then 1 mile north on ND Highway 1804, 2 miles west, 2 miles south and 1 mile west. (Gravel access road, fish cleaning facility, primitive camping, picnic shelter, trash receptacles, concession – Army Corps of Engineers).

**57. LANGELIERS BAY** – 10 miles west of Strasburg, 1 mile south, 7 miles west, then 11 miles south on ND Highway 1804, and 3/4 mile west. (Paved access road, fish cleaning facility, primitive camping, security lights, trash receptacles – Emmons County Park Board).