

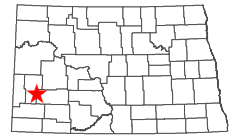
Belfield Dam

Stark County

Lake Statistics

Surface Area (acres)	7.1
Volume (acre/feet)	61.4
Average Depth (feet)	8.5
Max Depth (feet)	17.5
Shoreline (miles)	0.8

** Based on Full Pool Elevation

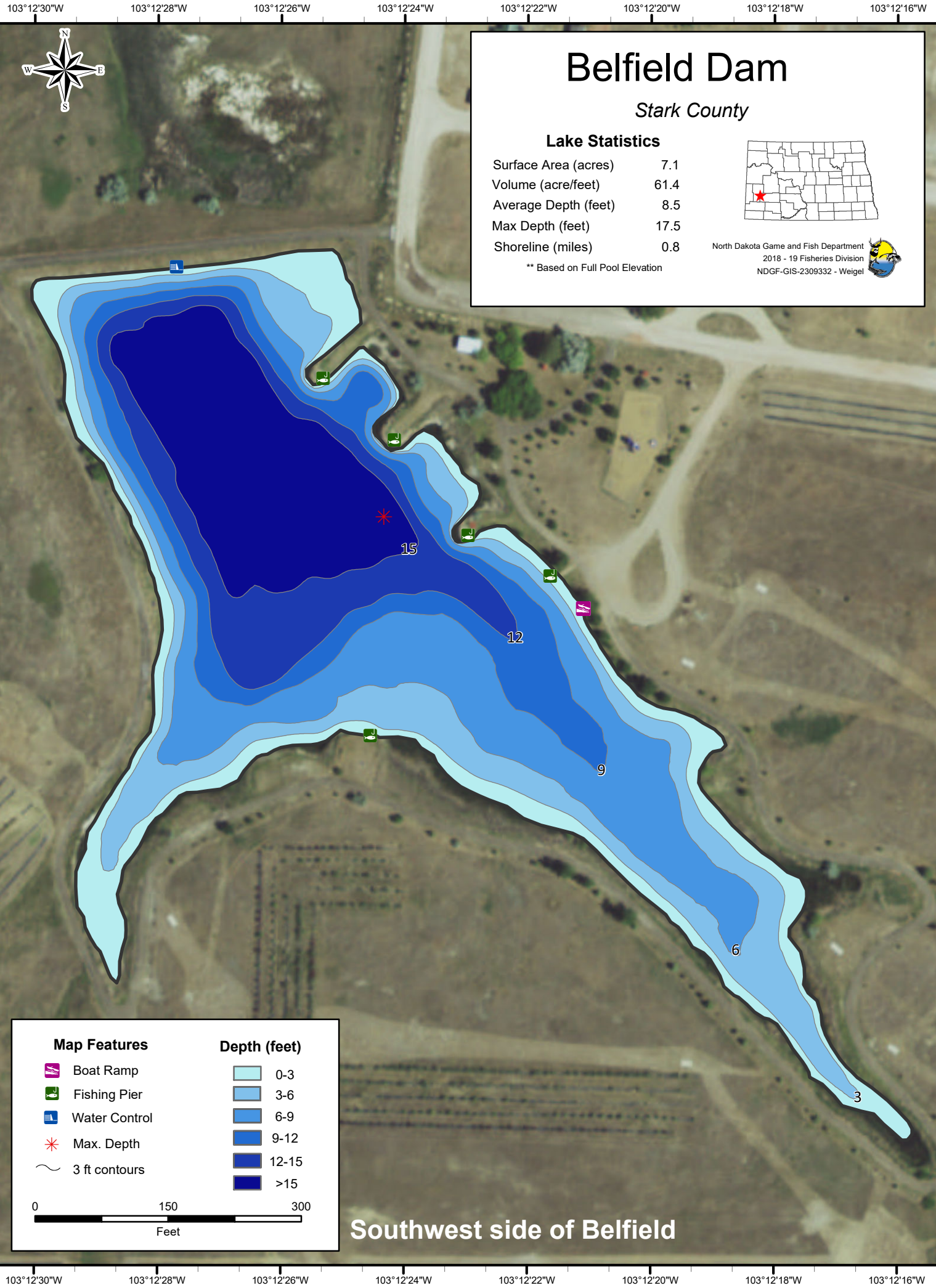


North Dakota Game and Fish Department
2018 - 19 Fisheries Division
NDGF-GIS-2309332 - Weigel



46°52'48"N
46°52'46"N
46°52'44"N
46°52'42"N
46°52'40"N
46°52'38"N
46°52'36"N

46°52'48"N
46°52'46"N
46°52'44"N
46°52'42"N
46°52'40"N
46°52'38"N
46°52'36"N

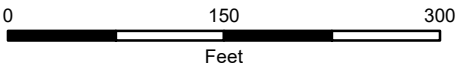


Map Features

- Boat Ramp
- Fishing Pier
- Water Control
- Max. Depth
- 3 ft contours

Depth (feet)

- 0-3
- 3-6
- 6-9
- 9-12
- 12-15
- 12-15
- >15 feet depth swatch"/> >15



Southwest side of Belfield