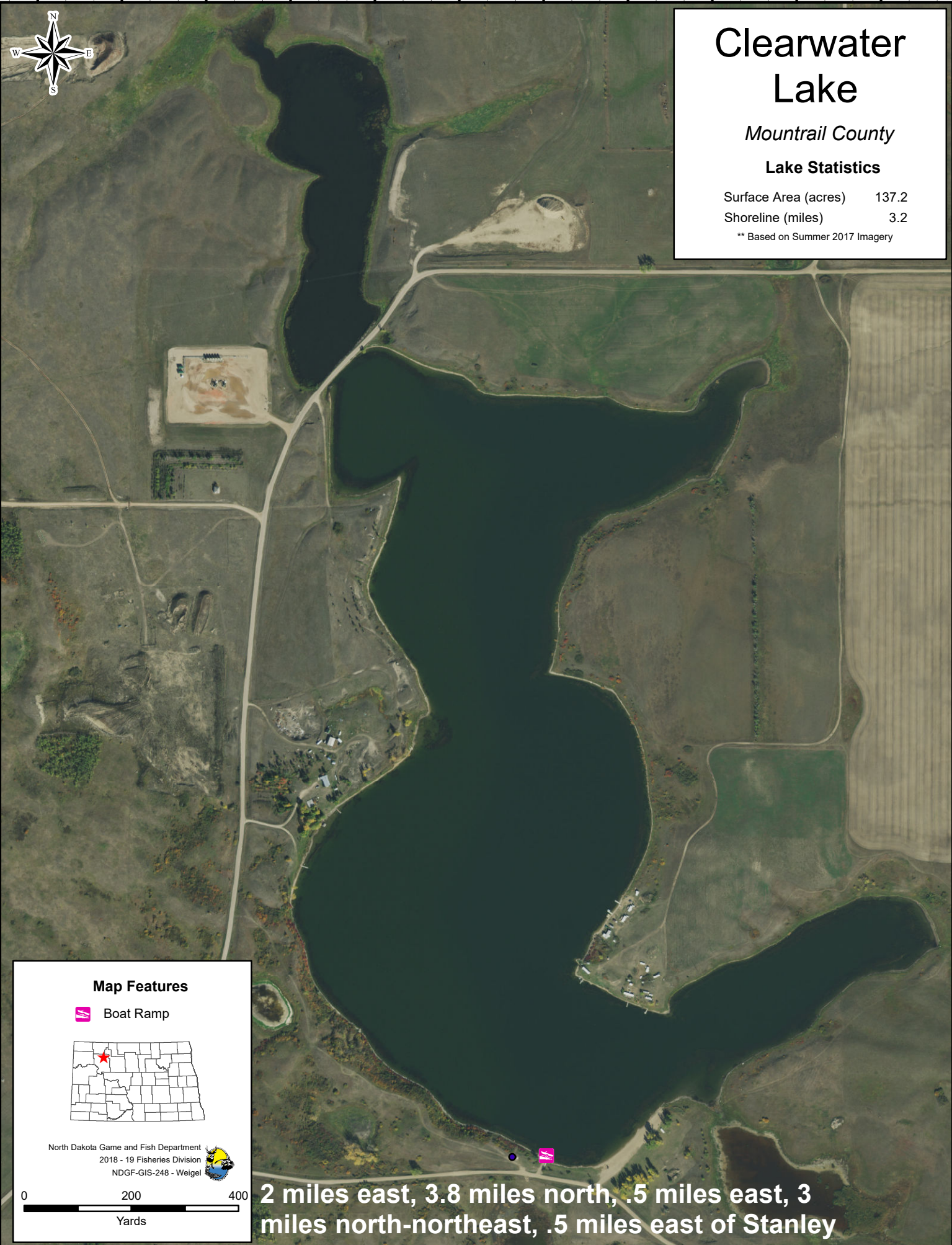


102°17'46"W 102°17'39"W 102°17'32"W 102°17'25"W 102°17'18"W 102°17'11"W 102°17'4"W 102°16'57"W 102°16'50"W 102°16'43"W 102°16'36"W



Clearwater Lake

Mountrail County


Lake Statistics

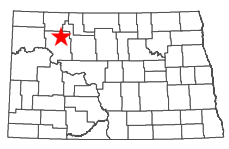
Surface Area (acres) 137.2


Shoreline (miles) 3.2

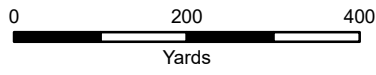
** Based on Summer 2017 Imagery

Map Features

 Boat Ramp



North Dakota Game and Fish Department
2018 - 19 Fisheries Division
NDGF-GIS-248 - Weigel 



2 miles east, 3.8 miles north, .5 miles east, 3 miles north-northeast, .5 miles east of Stanley

102°17'46"W 102°17'39"W 102°17'32"W 102°17'25"W 102°17'18"W 102°17'11"W 102°17'4"W 102°16'57"W 102°16'50"W 102°16'43"W 102°16'36"W