

Nygren Dam

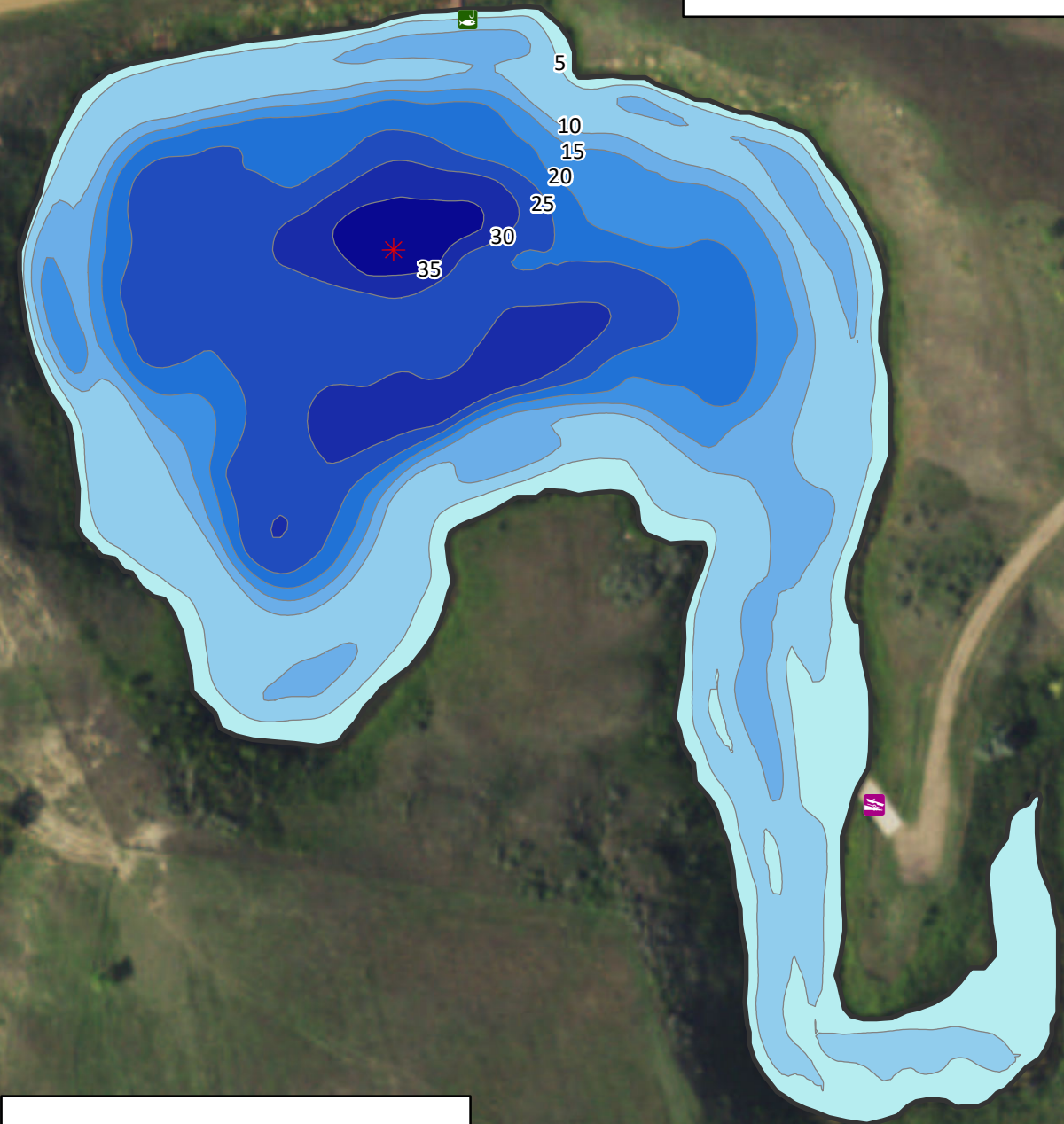
Morton County

Lake Statistics

Surface Area (acres)	6.7
Volume (acre/feet)	98.7
Average Depth (feet)	14.5
Max Depth (feet)	37.6
Shoreline (miles)	0.6

** Based on Active Pool
Elevation of 1982.0 ft MSL

North Dakota Game and Fish Department
2018 - 19 Fisheries Division
NDGF-GIS-242 - Weigel



Map Features		Depth (feet)	
	Boat Ramp		0-5
	Vault Toilet		5-10
	Water Control		10-15
	Max. Depth		15-20
	5 ft contours		20-25
			25-30
			30-35
		>35 depth contour"/>	>35

Feet

6 miles north, 1 mile east,
3 miles north, .5 miles east of Flasher

