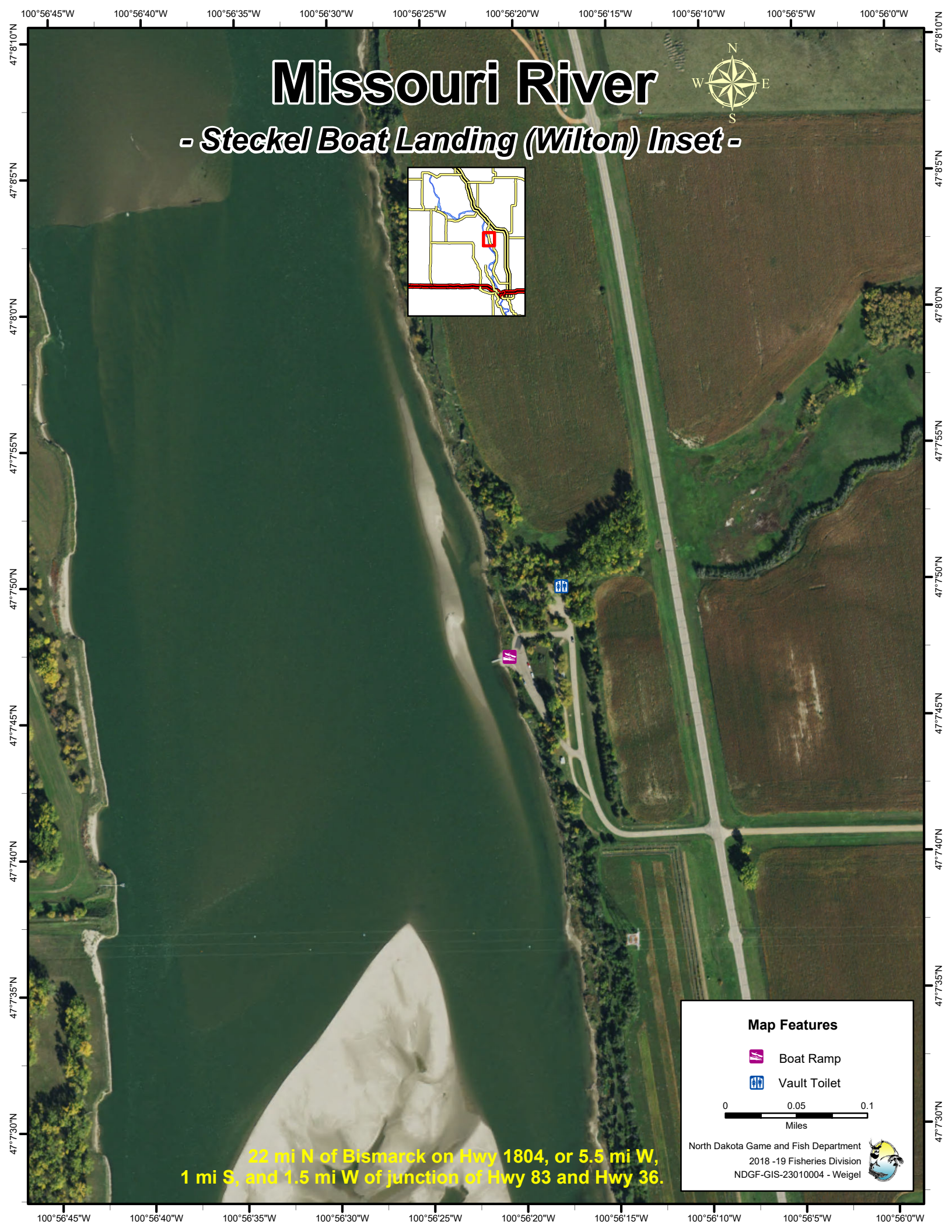
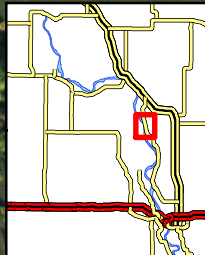




Missouri River

- Steckel Boat Landing (Wilton) Inset -




Map Features

-  Boat Ramp
-  Vault Toilet

0 0.05 0.1
Miles

North Dakota Game and Fish Department
2018 -19 Fisheries Division
NDGF-GIS-23010004 - Weigel



22 mi N of Bismarck on Hwy 1804, or 5.5 mi W,
1 mi S, and 1.5 mi W of junction of Hwy 83 and Hwy 36.