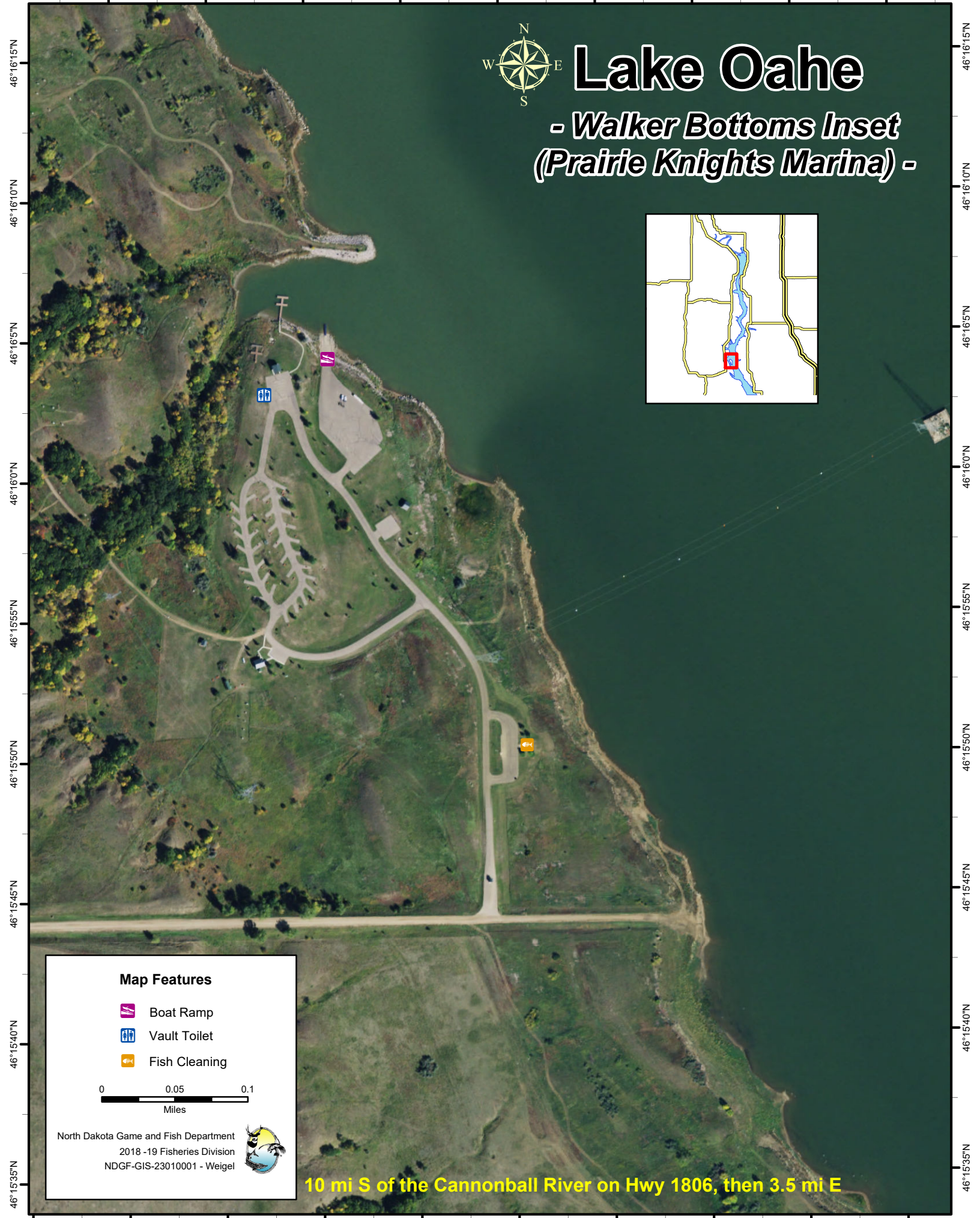


100°35'0"W 100°34'55"W 100°34'50"W 100°34'45"W 100°34'40"W 100°34'35"W 100°34'30"W 100°34'25"W 100°34'20"W






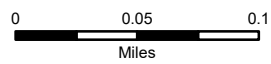
Lake Oahe

- Walker Bottoms Inset
(Prairie Knights Marina) -



Map Features

-  Boat Ramp
-  Vault Toilet
-  Fish Cleaning



North Dakota Game and Fish Department
2018 - 19 Fisheries Division
NDGF-GIS-23010001 - Weigel



10 mi S of the Cannonball River on Hwy 1806, then 3.5 mi E

100°35'5"W 100°35'0"W 100°34'55"W 100°34'50"W 100°34'45"W 100°34'40"W 100°34'35"W 100°34'30"W 100°34'25"W 100°34'20"W

46°16'15"N
46°16'10"N
46°16'5"N
46°16'0"N
46°15'55"N
46°15'50"N
46°15'45"N
46°15'40"N
46°15'35"N

46°16'15"N
46°16'10"N
46°16'5"N
46°16'0"N
46°15'55"N
46°15'50"N
46°15'45"N
46°15'40"N
46°15'35"N