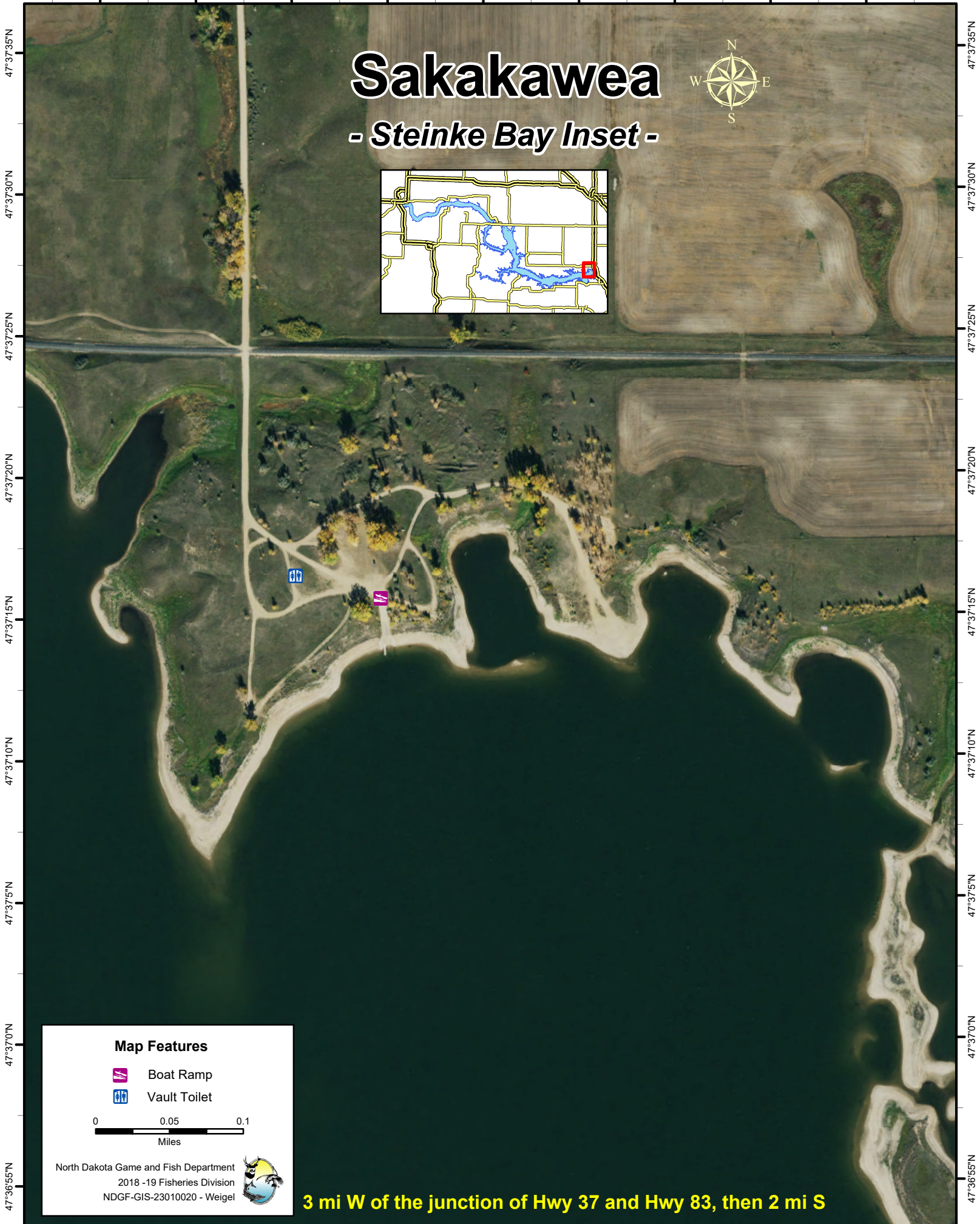
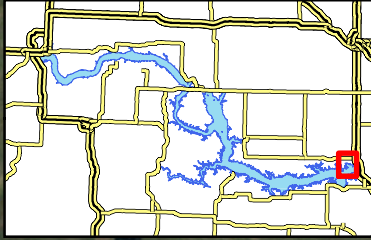




101°21'30"W 101°21'25"W 101°21'20"W 101°21'15"W 101°21'10"W 101°21'5"W 101°21'0"W 101°20'55"W 101°20'50"W

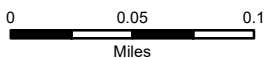
# Sakakawea

- Steinke Bay Inset -



### Map Features

-  Boat Ramp
-  Vault Toilet



North Dakota Game and Fish Department  
2018 -19 Fisheries Division  
NDGF-GIS-23010020 - Weigel



**3 mi W of the junction of Hwy 37 and Hwy 83, then 2 mi S**

101°21'30"W 101°21'25"W 101°21'20"W 101°21'15"W 101°21'10"W 101°21'5"W 101°21'0"W 101°20'55"W 101°20'50"W

47°37'35"N  
47°37'30"N  
47°37'25"N  
47°37'20"N  
47°37'15"N  
47°37'10"N  
47°37'5"N  
47°37'0"N  
47°36'55"N

47°37'35"N  
47°37'30"N  
47°37'25"N  
47°37'20"N  
47°37'15"N  
47°37'10"N  
47°37'5"N  
47°37'0"N  
47°36'55"N