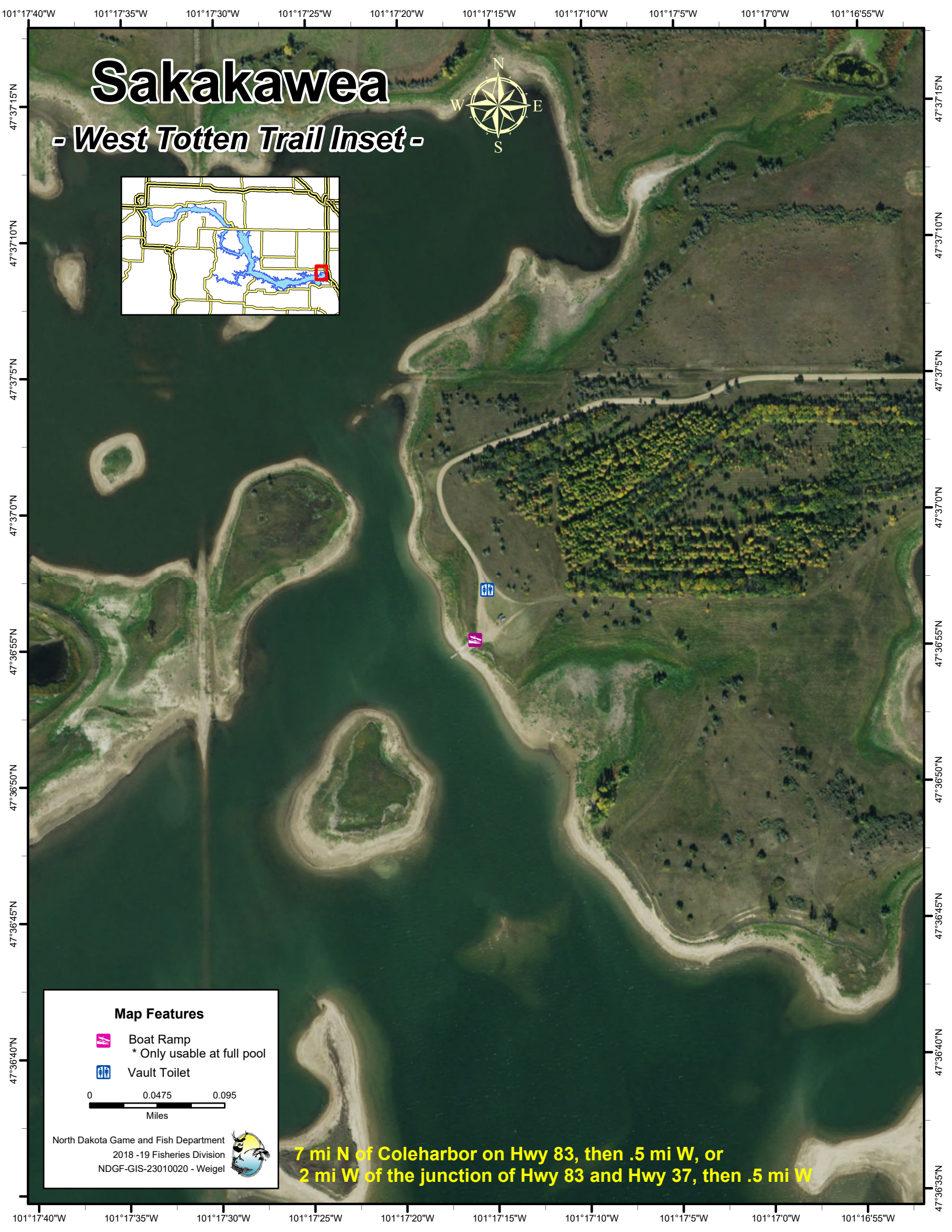
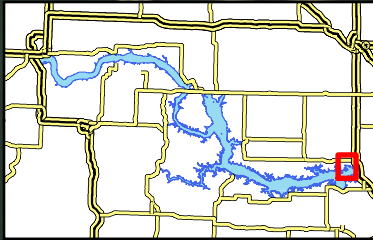




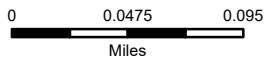
Sakakawea

- West Totten Trail Inset -



Map Features

-  Boat Ramp
* Only usable at full pool
-  Vault Toilet



North Dakota Game and Fish Department
2018 -19 Fisheries Division
NDGF-GIS-23010020 - Weigel



**7 mi N of Coleharbor on Hwy 83, then .5 mi W, or
2 mi W of the junction of Hwy 83 and Hwy 37, then .5 mi W**