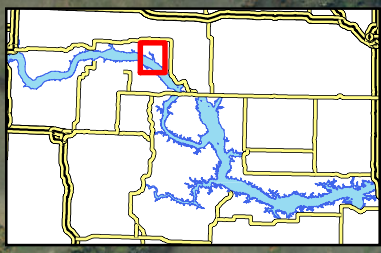







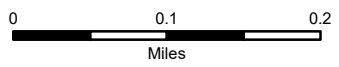
Sakakawea

- White Earth Bay Inset-




Map Features

-  Boat Ramp
-  Vault Toilet
-  Fish Cleaning



North Dakota Game and Fish Department
2018 -19 Fisheries Division
NDGF-GIS-23010020 - Weigel



28 mi NW of New Town on Hwy 1804, then 2 mi S, 1 mi E, 3 mi S, 3 mi E