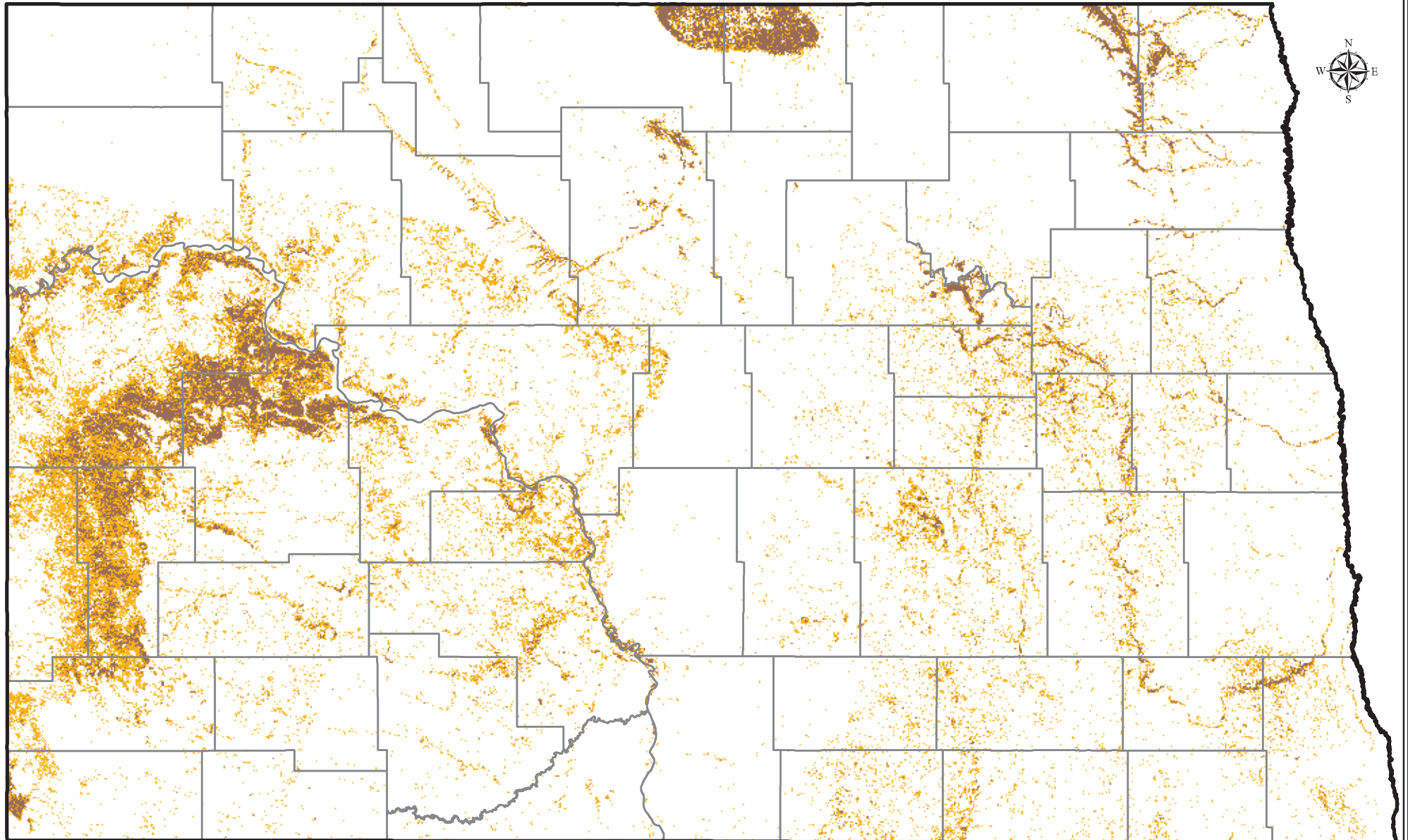


# North Dakota Game and Fish Department Micro Woodland Conservation Areas



Woodland/Shrubland  
Core Areas



Woodland/ Shrubland  
Complimentary Areas

The macro level woodland conservation areas (WCA) includes a core woodland/ shrubland component and a complimentary woodland/ shrubland component. The WCA uses a 40 acre neighborhood and identifies the percentage of the surrounding woodland/ shrubland throughout the specified area. The core areas consist of  $\geq 40\%$  woodland/ shrubland and the complimentary areas consist of  $\geq 15\%$  woodland/ shrubland. These areas are crucial to multiple aspects of a large variety of wildlife.