

NORTH DAKOTA OUTDOORS

PUBLISHED BY THE NORTH DAKOTA GAME AND FISH DEPARTMENT
\$2.00 March-April 2025



NORTH
Dakota | Game and Fish
Be Legendary.

DEPARTMENT DIRECTORY

Governor Kelly Armstrong

ADMINISTRATIVE DIVISION

Game and Fish Director: Jeb Williams
Deputy Director: Scott Peterson
Chief, Administrative Services: Brian Hosenk
Federal Aid Manager: Corey Wentland
Administrative Staff Officer: Justin Mattson
Administrative Assistant: Lynn Timm
Building Maint. Supervisor: Brandon Diehl
Administrative Officer: Melissa Long, Alan Peterson
Accounting Manager: Angie Morrison
Accountants: Kelly Wike, Ashley Hillerson
Business Operations Manager: Vacant
Technical Operations Lead: Alan Reile
Data Scientist: Shane Wegner
Licensing Manager: Randy Meissner
Assistants: Amanda Anstrom, Tracy Price, Tana Bentz, Tanya Mikkelsen, Elizabeth Klein
Administrative Assistant – Dickinson: Stephanie Richardson
Administrative Assistant – Devils Lake: Lisa Tofte
Administrative Assistant – Jamestown: Tonya Kukowski
Administrative Assistant – Riverdale: Mattea Bierman
Administrative Assistant – Williston: Stephanie Wellman

CONSERVATION AND COMMUNICATIONS DIVISION

Division Chief: Bruce Krefl, Bismarck
Communications Supervisor: Greg Freeman, Bismarck
Editor: *North Dakota OUTDOORS*: Ron Wilson, Bismarck
R3 Coordinator: Cayla Bendel, Bismarck
Digital Media Editor: Lara Anderson, Bismarck
Video Project Supervisor: Mike Anderson, Bismarck
Photographer/Videographer: Ashley Peterson, Bismarck
Marketing Specialist: Jackie Ressler, Bismarck
Information Specialist: Dawn Jochim, Bismarck
Graphic Artist: Kristi Fast, Bismarck
Education Supervisor: Marty Egeland, Bismarck
Education Coordinator: Jeff Long, Bismarck
Hunter Education Coordinator: Brian Schaffer, Bismarck
Outreach Biologists: Doug Leier, West Fargo; Greg Gullickson, Minot; Jim Job, Grand Forks
Conservation Supervisor: Patrick Isakson, Bismarck
Conservation Biologists: Sandra Johnson, Elisha Mueller, John Schumacher, Aaron Larsen, Bismarck
Administrative Assistant: Amber Schroeter, Bismarck

ENFORCEMENT DIVISION

Division Chief: Scott Winkelman, Bismarck
Investigative Supervisor: Jim Burud, Kenmare
Investigator: Blake Riewer, Grand Forks
Operations Supervisor: Jackie Lundstrom, Bismarck
Region No. 1 Warden Supvr: Michael Sedlacek, Jamestown
District Wardens: Corey Erck, Bismarck; Andrew Dahlgren, Minor; Erik Schmidt, Linton; Greg Hastings, Jamestown; Noah Raitz, LaMoure; Gavin Herbert, Steele
Region No. 2 Warden Supvr: Paul Freeman, Devils Lake
District Wardens: Jonathan Tofteand, Bottineau; Jonathan Peterson, Devils Lake; James Myhre, New Rockford; Alan Howard, Cando; Drew Johnson, Finley; Sam Feldmann, Rugby; Gage Muench, Grand Forks
Region No. 3 Warden Supvr: Joe Lucas, Riverdale
District Wardens: Ken Skuza, Riverdale; Michael Raasakka, Stanley; Connor Folkers, Watford City; Shawn Sperring, Minot; Keenan Snyder, Williston; Josh Hedstrom, Tioga; Riley Gerding, Kenmare; Clayton Edstrom, Turtle Lake
Region No. 4 Warden Supvr: Dan Hoenke, Dickinson
District Wardens: Kylor Johnston, Hazen; Zachary Biberdorf, Bowman; Courtney Sprenger, Elgin; Zane Manhart, Golva; Jerad Bluem, Mandan; Zachary Schuchard, Richardton
Administrative Assistant: Lori Kensington, Bismarck

WILDLIFE DIVISION

Division Chief: Casey Anderson, Bismarck
Assistant Division Chief: Bill Haase, Bismarck
Game Mgt. Section Leader: Stephanie Tucker, Bismarck
Pilot: Jeff Faught, Bismarck
Upland Game Mgt. Supvr: Jesse Kolar, Dickinson
Upland Game Mgt. Biologist: Rodney Gross, Bismarck
Migratory Game Bird Mgt. Supvr: Mike Szymanski, Bismarck
Migratory Game Bird Biologist: John Palarski, Bismarck
Big Game Mgt. Supvr: Bruce Stillings, Dickinson
Big Game Mgt. Biologists: Brett Wiedmann, Dickinson; Jason Smith, Jamestown; Ben Matykiewicz, Bismarck
Survey Coordinator: Chad Parent, Bismarck
Wildlife Veterinarian: Dr. Charlie Bahnson, Bismarck
Wildlife Health Biologist: Mason Rycman, Bismarck
Game Management Biological Technician: Ryan Herigstad, Bismarck
Wildlife Resource Management Section Leader: Kent Luttschwager, Williston
Wildlife Resource Mgt. Supvrs: Brian Prince, Devils Lake; Brian Kletzman, Jamestown; Dan Halstead, Riverdale; Blake Schaan, Lonetree; Levi Jacobson, Bismarck; Judd Jasmer, Dickinson
Wildlife Resource Mgt. Biologists: Randy Littlefield, Lonetree; Rodd Compson, Jamestown; Todd Buckley, Williston; Jake Oster, Riverdale; Jens Johnson, Bismarck; Andrew Ahrens, Devils Lake
Wildlife Biological Technicians: Tom Crutchfield, Jim Houston, Bismarck; Dan Morman, Robert Miller, Riverdale; Jason Rowell, Jamestown; Scott Olson, Devils Lake; Zach Eustice, Williston; Colton Soiseth, Quentin Corcoran, Lonetree
Private Land Section Leader: Kevin Kading, Bismarck
Habitat Manager: Nathan Harling, Bismarck
Private Land Field Operation Supvrs: Curtis Francis, East Region, Andrew Dinges, West Region, Bismarck
Private Land Biologists: Colin Penner, Jaden Honeyman, Ryan Huber, Riverdale; Renae Schultz, Jeff Williams, Jamestown; Terry Oswald, Jr., Lonetree; Erica Sevigny, Williston; Brandon Ramsey, Dickinson; Matthew Parvey, Devils Lake
Procurement Officer: Dale Repnow, Bismarck
Administrative Assistant: Alegra Powers, Bismarck
Lonetree Administrative Assistant: Diana Raugust, Harvey

FISHERIES DIVISION

Division Chief: Greg Power, Bismarck
Fisheries Mgt. Section Leader: Scott Gangl, Bismarck
Fisheries Supvrs: Russ Kinzler, Dave Fryda, Riverdale; Paul Bailey, Bismarck; Brandon Kratz, Jamestown; Aaron Slominski, Williston; Bryan Sea, Devils Lake
Fisheries Biologists: Todd Caspers, Devils Lake; Mike Johnson, Jamestown; Jeff Merchant, Dickinson; Zach Kjos, Riverdale
Fisheries Biological Technicians: Phil Miller, Devils Lake; Justen Barstad, Bismarck; Brian Frohlich, Riverdale; Lucas Rott, Jamestown; Ethan Krebs, Williston
Production/Development Section Supvr: Jerry Weigel, Bismarck
Aquatic Nuisance Species Coordinator: Benjamin Holen, Jamestown
Aquatic Nuisance Species Biologists: Mason Hammer, Kyle Oxley, Jamestown
Fisheries Development Supvr: Bob Frohlich, Bismarck
Fisheries Dev. Proj. Mgr: Wesley Erdle, Bismarck
Fisheries Development Specialist: Kyle Hoge, Jacob Heyer, Joe Fladeland, Bismarck
Administrative Assistant: Janice Vetter, Bismarck

ADVISORY BOARD

District 1Beau Wisness, Keene
District 2Travis Leier, Veva
District 3Edward Dosch, Devils Lake
District 4Karissa Daws, Michigan
District 5Doug Madsen, Harwood
District 6Cody Sand, Ashley
District 7Jody Sommer, Mandan
District 8Rob Brooks, Rhame



NORTH
Dakota | Game and Fish
Be Legendary.



Contributing photographers for this issue: Mike Anderson, Paul Bailey, Jeff Merchant and Ashley Peterson.

Official publication of the North Dakota Game and Fish Department (ISSN 0029-2761)

100 N. Bismarck Expressway, Bismarck, ND 58501-5095

Website: gf.nd.gov • Email: ndgf@nd.gov

- Information 701-328-6300 • Licensing 701-328-6335
- Administration 701-328-6305
- *North Dakota Outdoors* Subscriptions 701-328-6363
- Hunter Education 701-328-6615
- The TTY/TTD (Relay ND) number for the hearing or speech impaired is 800-366-6888

Periodical Postage Paid at Bismarck, ND 58501 and additional entry offices. Printed in the United States

POSTMASTER: Send address changes to:
North Dakota OUTDOORS
100 North Bismarck Expressway
Bismarck, ND 58501-5095

Report All Poachers (RAP) 701-328-9921
In cooperation with North Dakota Wildlife Federation and North Dakota State Radio.

NORTH DAKOTA OUTDOORS

PUBLISHED BY THE NORTH DAKOTA GAME AND FISH DEPARTMENT

The mission of the North Dakota Game and Fish Department is to protect, conserve and enhance fish and wildlife populations and their habitats for sustained public consumptive and nonconsumptive use.

• **Editor:** Ron Wilson • **Graphic Designer:** Kristi Fast • **Circulation Manager:** Dawn Jochim

MARCH-APRIL 2025 • NUMBER 8 • VOLUME LXXXVII

CONTENTS

2 | My 2 Cents

4 | Tale of Big Tails

8 | North Dakota Fishing Waters

32 | 2024 Fish Stocking Report

35 | Devils Lake Basin Boating Access

36 | Missouri River System Boating Access

40 | 2024 Top Whopper

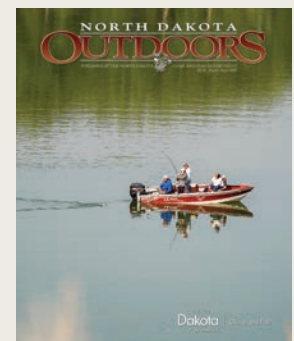
41 | Back Cast

Last spring, North Dakota Game and Fish Department fisheries biologists collected 55.7 million walleye eggs, surpassing the goal of 50 million eggs.

North Dakota OUTDOORS is published 10 times a year, monthly except for the months of April and September. Subscription rates are \$10 for one year or \$20 for three years. Group rates of \$7 a year are available to organizations presenting 25 or more subscriptions. Remittance should be by check or money order payable to the North Dakota Game and Fish Department. Indicate if subscription is new or renewal. The numbers on the upper right corner of the mailing label indicate the date of the last issue a subscriber will receive unless the subscription is renewed.

Permission to reprint materials appearing in *North Dakota OUTDOORS* must be obtained from the author, artist or photographer. We encourage contributions; contact the editor for writer and photography guidelines prior to submission.

The NDGFD receives Federal financial assistance from the US Fish and Wildlife Service and the US Coast Guard. In accordance with Title VI of the Civil Rights Act of 1964, Section 504 of the Rehabilitation Act of 1973, Title II of the Americans with Disabilities Act of 1990, the Age Discrimination Act of 1975, and Title IX of the Education Amendments of 1972, the NDGFD joins the US Department of the Interior and its Bureaus and the US Department of Homeland Security in prohibiting discrimination on the basis of race, color, national origin, age, disability, sex (in education programs or activities) and also religion. If you believe you have been discriminated against in any program, activity, or facility as described above, or you desire further information, please write to: ND Game and Fish Department, Attn: Chief of Administrative Services, 100 N. Bismarck Expressway, Bismarck, ND 58501-5095 or to: Office of Civil Rights, Department of the Interior, 1849 C Street, NW, Washington, DC 20240.



Front Cover

Fish on. Walleye fishing in 2024 on the Missouri River north of Bismarck.

PHOTO BY ASHLEY PETERSON.



My 2 Cents

By Jeb Williams, Director

In anticipation of the fishing season, I thought it might be fun to reminisce about past rules and regulations as many avid anglers don't remember when North Dakota had a true opening day for the open water season.

North Dakota has had a year-round fishing season since 1993. The Missouri River System has been open year-round since 1975. That's getting to be a number of years ago yet I'm often reminded of how North Dakotans do like tradition and some traditions are not easily forgotten.

Over the last couple of months during the legislative session the question of year-round fishing has been asked several times in various settings, simply out of curiosity. With Minnesota still holding onto a spring fishing opener, it probably makes some sense as to why anglers are still reminded of our long-ago spring fishing opener.

While I'm not a proponent of going back from our current year-round fishing opportunities, I do have to admit, and I'm certain others feel similar, that we all love the excitement of an "opening day" experience. A concentration of anglers camping at a small North Dakota lake in spring during the opener is one of those things you don't often see nowadays. Opening the state's waters to year-round fishing essentially spread-out early fishing pressure over several weeks. Gone, for the most part on many North Dakota waters, are the

days of having to share prime shore-fishing real estate with a bunch of other anglers.

As background, seasonal closures (generally mid-March through early May) were common in most walleye fisheries throughout the U.S. through the 1970s. Limited science and knowledge at the time resulted in the sentiment that fisheries managers must protect the spawners. However, in the past 40 years, the biological knowledge has improved dramatically throughout the country and now most states have a 365-day season. In the few cases where there is a spring closure, its driven by tradition, not biology.

The Department has evolved over the years through research and data collection to allow for more opportunities for anglers without impacting the resource. While the occasional discussion still comes up about protecting spring spawners, the Department closely monitors fish populations and would consider appropriate regulations if they would result in actual improvements to a fishery. But much of the time it comes down to a social issue, which the Department feels is best left up to an individual angler in making a catch or release decision.

The year-round angling experience is here to stay, but a look back is thought-provoking when remembering how things used to be.

PROTECT THE LAKES YOU LOVE.



CLEAN



DRAIN



DRY





Big bluegill netted during Game and Fish Department fisheries work at Indian Creek.



TALES OF BIG TAILS

By Greg Power

Many outdoorsmen and women are wired to share fishing and hunting stories that involve watching, pursuing and/or harvesting something big. Coffee-talk centers around outdoing one another as we embellish stories about big fish or bucks. Social media is full of such stories and industry marketing is very proficient at selling something that will improve one's chances of catching or shooting something big. This desire surfaces into reality as many tournament sponsors try to schedule their events at places and times when big fish can be caught. Hunters review data and apply for units in and out of state known to hold big antlers.

Since one of my job responsibilities at one time was to sample North Dakota's lakes and rivers, a common question I received from the public over the years is "What's the biggest fish you've ever seen?" Because most anglers enjoy big fish stories, I have a couple tales to tell ... and none of them involve fish in Game and Fish Department nets.

My first big fish story involves bluegill and given that the current state record dates way back to 1963, a truly large bluegill tale is noteworthy. Unfortunately, many of North Dakota's fishing waters are prone to winter-kill and a well-established fishery with quality fish may succumb to a long, snowy winter. This was the case 40 or so years ago for Crooked Lake in McLean County.

In April of that year, we received reports from the public of a bad fish-kill at Crooked. As is often the case with winterkills, gulls and the general aroma confirmed something of concern before I observed the first dead fish. I walked about a mile of shoreline, noting thousands of dead northern pike, walleye, yellow perch, white sucker and bluegill beached or still floating in the lake.

At the time, Crooked Lake supported a strong fishery, so many of the dead fish were nice-sized. Just before I had planned to end my walk and turnaround, I spotted a dead fish that stood out. It was a bluegill much, much larger than anything I had ever seen. Its size was well beyond the often-used "plate-sized" description. Instead, the fish was more the size of a large platter.

The state record bluegill stands today, as it also did back then, at 2 pounds, 12 ounces, taken from Strawberry Lake, which is connected to Crooked a couple miles upstream. Undoubtedly, this dead fish on Crooked Lake's shore was well over 3 pounds. While this was before the days of cellphones with cameras, I still wish I had taken more time to document its size. Then again, this is what makes big fish stories. Even though this occurred 40 or so years ago, I often still see that fish, stored away somewhere in my gray matter.

My next tale involves a northern pike I hooked but never landed while fishing. A few years back, a fishing buddy and I were jigging for walleye on the Missouri River north of Bismarck. From my perspective, there's nothing more enjoyable than using lightweight jigs to catch 16- to 18-inch walleye. We had boated several walleye when I snagged what I sus-


pected was a tree. As often noted by fellow anglers who experience the infamous "tree snag," after a few seconds the tree started to move ... upstream. The battle was on.

After participating in a few incidental paddlefish snags with my small jigs in the past, I fully expected the same outcome with the fish at the end of my line. Meaning, the fish would come near the surface and rocket off as my reel would sing goodbye. That was not the case this time. The fish remained deep and kept going against the current. After about two hours (sorry, let's realistically say about a minute or two), I was able to coax the fish near the surface. As we were hoping to finally lay our eyes on this giant, it again made another deep run. Someway, somehow my 6-pound test line was holding up, far better than my feeble arms. After another couple minutes, I again managed to work the fish to the surface, and we finally laid eyes on the prize. It was the largest northern pike I'd ever seen (minus a few European photos). Its shoulder width was astonishing. A true once-in-a-lifetime fish that had no intentions of sticking around for a photo opp.

As the pike decided enough was enough and made its final run to freedom, I swear it looked back at me with a smile. The outdoors has a way of leaving one humbled and in awe with both its beauty and wild spirit and this was one of those times.

Although this pike was likely around 30 pounds, as the years have passed, and since this is my story, I now believe it was 50 pounds.

My last tale is not about one of my experiences, instead I want to revisit an old story that never received a lot of fanfare. Many anglers upgrade their equipment every year with a faint hope they may be able to boat the most coveted state record. For nearly 60 years, the state record walleye remained untouched at 15 pounds, 12 ounces. Then in less than three years, the record was broken twice and currently sits at 16 pounds, 6 ounces. These two most recent record walleyes were verified, and with today's connectivity, left little doubt about their legitimacy.

A photograph of a man, Jared Shypkoski, smiling and holding a large walleye fish. He is wearing a dark jacket and a cap. The fish is held horizontally in front of him. The background shows a body of water and a distant shoreline under a cloudy sky.

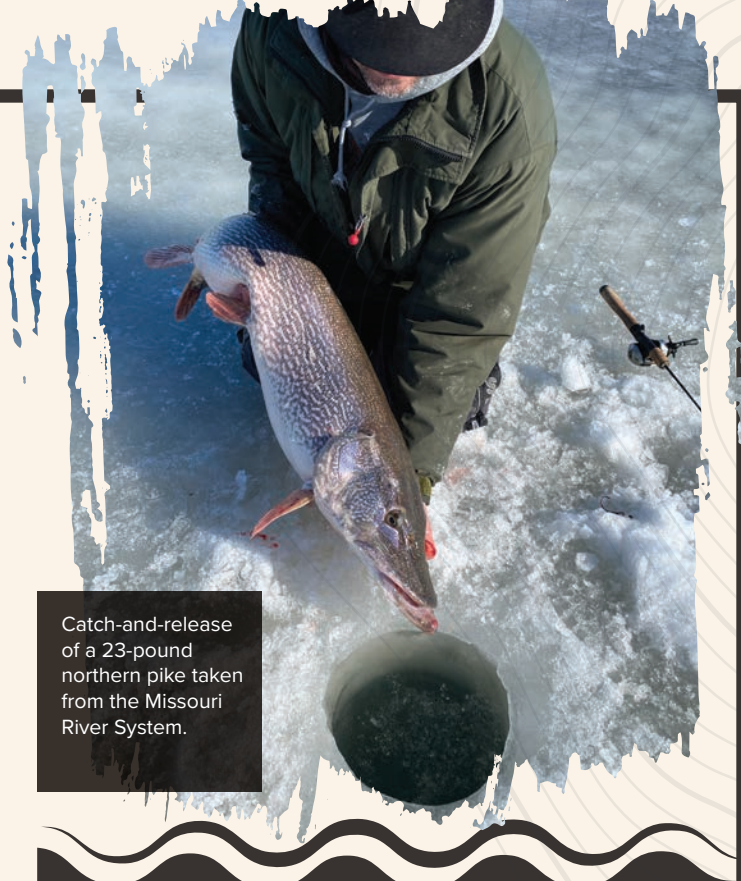
Jared Shypkoski, Dickinson, with his 16-pound, 6-ounce record walleye from the Missouri River System in 2021.

However, going back in time there was a very large walleye taken from North Dakota that received little attention other than from the Game and Fish Department's very own *North Dakota OUTDOORS*. In the August 1952 edition of NDO, it was stated: "Top news for this year, or for many years past, is the whopper walleye taken by Mohler Lynch from Spring Creek, near Halliday. Believe it or not this walleye weighed eighteen and three quarter's pounds. The world's record walleye is only 22 pounds ... Biologist Ed Hibbard, who saw the fish, reports that when Mr. Lynch held it up, it reached from the middle of his pants pocket down to the top of his shoe. Thirty-three and three quarters inches long, the big one measured 23 and $\frac{3}{4}$ inches around the middle. It was taken on a seven-inch chub for bait, a cane pole and forty-five-pound test line."

Between September 1952 and November 1956, this large fish was again referenced five more times in NDO ... and nothing but crickets since. It's hard enough to recall matters a few months or years ago, let alone to revisit an event that occurred decades earlier. However, in 2011, I did some researching and made some calls to family members to see if there may be some old fish photos somewhere. I was able to touch base with one extended family member who indicated the large walleye was still well known within the family. She remembered seeing the very large walleye that created quite a stir when weighed at the local hardware store. She believed there were even several pictures of the fish. Unfortunately, I was unable to locate any of these photos, so I guess that's where the story ends ... again.

As far as where the 18-plus walleye ended up, apparently it was devoured shortly after being caught (half baked, half fried). Perhaps it's best we never know more about this fish. Sometimes the tales generated are better than a fish tail mounted on the wall.

GREG POWER is the Game and Fish Department's fisheries chief.



Catch-and-release of a 23-pound northern pike taken from the Missouri River System.

WHOPPER FISH

How rare are truly big fish? Northern pike and walleye are two of the most pursued fish species in North Dakota. Fortunately for the past 60-plus years, some truly big pike and walleye have been caught. Eight-pound walleye and 20-pound pike (minimums for the Game and Fish Department's Whopper program) are for most people, once-in-a-lifetime fish. A few years back, 63 years of walleye and pike data from the Whopper and Catch and Release programs were reviewed, and the following was determined:

WALLEYE

- 5 out of 9,479 walleye eight pounds and greater were 15 pounds and larger.
- 81 out of 18,516 walleye 25 inches and greater were 33 inches and longer.

NORTHERN PIKE

- 6 out of 1,918 northern pike 20 pounds and greater were 33 pounds and larger.
- 18 out of 5,655 northern pike 36 inches and greater were 50 inches and longer.

Even amongst these whopper sized fish, there are a few, very few, that are incredibly large.



Jack Ressler with a prairie lake walleye.

NORTH DAKOTA *Fishing* WATERS

North Dakota has more than 400 fishing waters that have public access and some degree of management by state Game and Fish Department biologists.

What follows are driving directions and infrastructure information for these managed waters, plus additional fish population remarks for many of them.

The number in parenthesis that follows each fishery is simply a code used by biologists to help identify those waters. The codes are also found on the accompanying maps to help readers locate specific waters.

The fishery outlooks provided by Game and Fish Department district fisheries supervisors and biologists are not all-in-

clusive reports, but rather peeks into each water's fish populations to help frame angler expectations. With a record number of lakes scattered across North Dakota, fisheries biologists have yet to conduct thorough population assessments on many of these waters.

Any changes and updates on managed lakes appear under the fishing tab on the Game and Fish Department's website at gf.nd.gov.

Most state public fishing waters have boat ramps. Lakes or rivers where no ramp exists are listed as "no ramp." Check signs at each area for further restrictions.

NORTHWEST FISHERIES DISTRICT

Aaron Slominski, district fisheries supervisor, Williston

BURKE COUNTY

Northgate Dam (097) – 6 miles north, 1 mile west, 2 miles north, .5 miles west of Bowbells. Good walleye and bluegill populations. Stocked with rainbow trout annually, with some nice-sized carry over fish. Largemouth bass and black crappie present. (Fishing pier).

Powers Lake (093) – Southeast side of Powers Lake. Decent number of pike. (Fishing pier).

Short Creek Dam (094) – 5.5 miles north of Columbus. Bluegill, perch, pike and walleye present. (Fishing pier).

Smishek Lake (095) – 4 miles northwest of Powers Lake. Decent numbers of walleye and pike, with some large fish of both species. Small perch and bluegill abundant, with some large bluegill in low numbers. (Fishing pier).

DIVIDE COUNTY

Baukol-Noonan Dam (475) – 3 miles east, 1.5 miles south, .5 miles west of Noonan. Decent numbers of pike and walleye. Abundant small perch and bluegill. Largemouth bass present. (Fishing pier).

Baukol-Noonan East Mine Pond (508) – 3 miles east, 1 mile south, .8 miles west, .4 miles south of Noonan. Good number of largemouth bass. Small bluegill and perch abundant.

Skjermo Lake (126) – 3 miles west, 4 miles northwest of Fortuna. Good numbers of pike and perch. (Fishing pier).

MCKENZIE COUNTY

Arnegard Dam (216) – .5 miles west, 2 miles north, 1.5 miles west of Arnegard. Good pike population. Yellow perch present, but most are smaller. Abundant black bullhead population. Stocked with adult catfish and bluegill in 2024. (Fishing pier).

Hepper Dam (067) – 1.5 miles south, 3 miles east, 1.2 miles north, 2 miles

east, 1.2 miles southeast of Keene. Stocked with adult bluegill in 2024. (No ramp).

Sather Dam (217) – 11 miles south, 8 miles west of Alexander. Good bluegill and largemouth bass populations, though most are smaller. Crappie present. (Fishing pier).

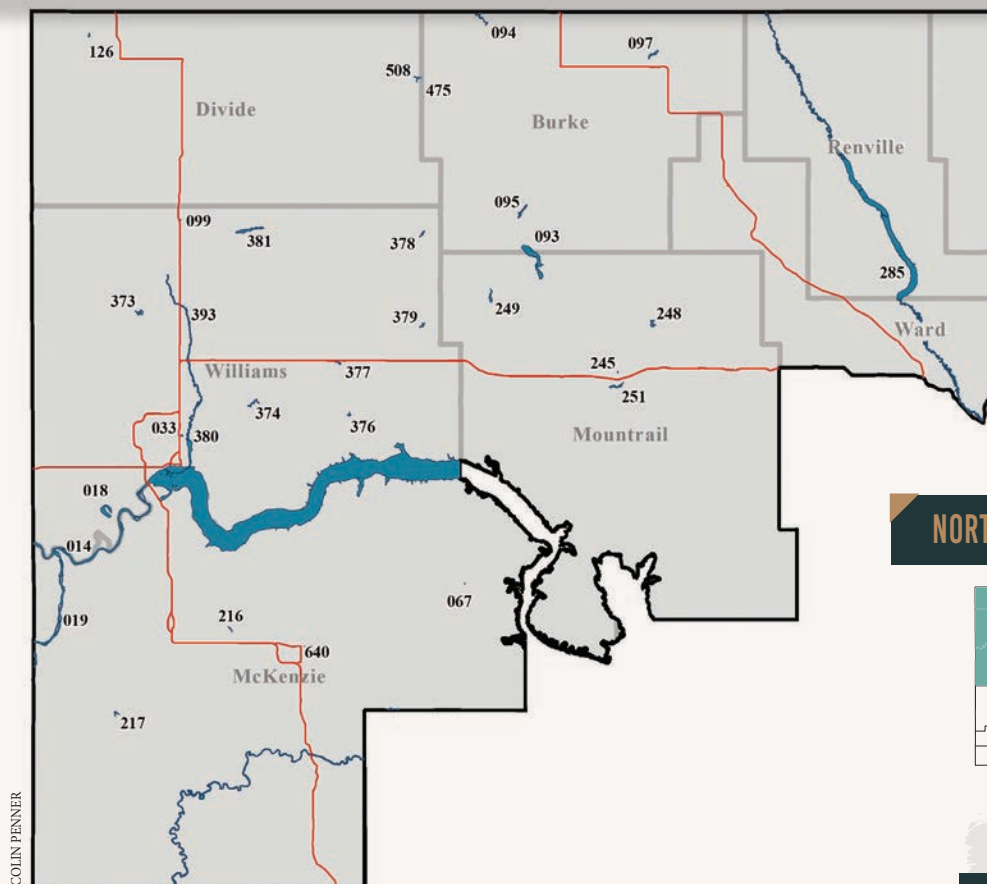
Watford City Park Pond (640) – Southeast side of Watford City. Fishery is reliant on annual stocking due to frequent winterkills. (Fishing pier, no ramp).

MOUNTRAIL COUNTY

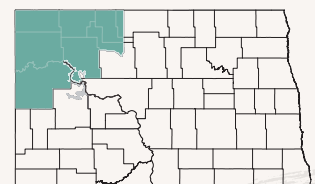
Clearwater Lake (248) – 2 miles east, 3.8 miles north, .5 miles east, 3 miles north-northeast, .5 miles east of Stanley. Strong pike population. Walleye present in lower numbers.

Stanley Pond (245) – Northeast side of Stanley. Fishery is reliant on annual stocking due to frequent winterkills. (Fishing pier).

Stanley Reservoir (251) – 1 mile south of Stanley. Low number of smaller pike. (No ramp).



NORTHWEST FISHERIES DISTRICT



White Earth Dam (249) – 6 miles north, 8.5 miles east, 2 miles south of Tioga. Decent walleye and pike populations. Bluegill, crappie and perch present. (Fishing pier).

RENVILLE COUNTY

Lake Darling (285) – 16 miles north, 13 miles west of Minot. Good walleye population. Perch, pike, smallmouth bass and black bullhead present. (Fishing pier).

WILLIAMS COUNTY

Blacktail Dam (373) – 5 miles north, 5 miles west, 1 mile north of the junction of U.S. highways 2 and 85. Good numbers of walleye and pike, with some bigger fish of both species. Small perch and bluegill abundant, with some bigger

bluegill in low numbers. Smallmouth bass in low numbers. (Fishing pier).
Cottonwood Lake (381) – 1 mile east, .5 miles north of Alamo. Pike and perch in low numbers. (Fishing pier).
East Spring Lake Pond (380) – North side of Williston. Winterkills every year. Fishing opportunities reliant on annual stocking of adult pike. (Fishing pier, no ramp).
Epping-Springbrook Dam (374) – 1.5 miles east of Springbrook. Catfish, perch, pike and walleye present. Abundant bullhead population. (Fishing pier).
Kettle Lake (099) – 3 miles east, 2.5 miles north of Zahl. Rainbow trout stocked annually. Bluegill and largemouth bass present. (Fishing pier).
Kota-Ray Dam (376) – 5 miles south, .5 miles east, 2 miles south of Ray. Boat ramp and recreation area closed while renovation project is going on. Good number of nice largemouth bass. Small perch abundant. Walleye, bluegill and smallmouth bass present. Brown trout stocked in 2024, rainbow trout stocked annually. (Fishing pier).
Little Muddy River (393) – East edge of Williston. Highly dependent on high water levels and fish movement from upper Missouri River. Fair populations of pike and catfish, with many other species present. (Fishing pier).
McGregor Dam (378) – 1 mile south of McGregor. Good numbers of crappie, bluegill and walleye, though most fish are smaller. Rainbow trout stocked annually. (Fishing pier).
McLeod (Ray) Reservoir (377) – Southwest side of Ray. Good pike population. Perch and walleye present. Stocked with adult bluegill and smallmouth bass in 2024. (Fishing pier).

Tioga Dam (379) – North side of Tioga. Good number of pike. Perch and bluegill present. (Fishing pier).
Trenton Lake (018) – South side of Trenton. Boat ramp closed until further notice. Good crappie population. Decent numbers of walleye, pike and catfish. Due to periodic interconnection with the Missouri River, many other species present. (Fishing pier).
West Spring Lake Pond (033) – North edge of Williston. Fishery reliant on annual stocking due to frequent winterkills. (No ramp).

RIVERS AND LAKES

Upper Missouri River (014) – Missouri River from Williston to Montana state line. Primarily a spring and fall fishery for sauger and walleye. Fishing success largely driven by water clarity. Channel catfish abundant. Many other species present.
Yellowstone River (019) – Near the towns of Buford, Cartwright and Fairview. Primarily a spring and fall fishery for sauger and walleye. Channel catfish abundant. Many other species present. (Fishing pier).

SOUTHWEST FISHERIES DISTRICT

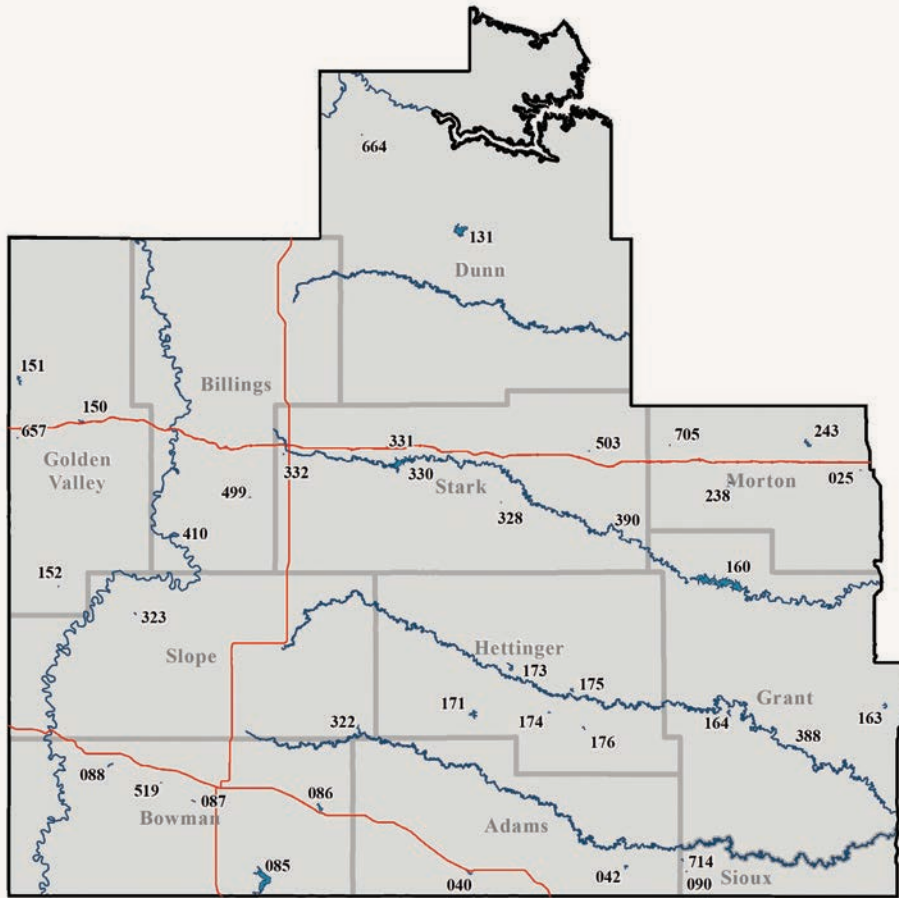
Jeff Merchant, district fisheries biologist, Dickinson

ADAMS COUNTY

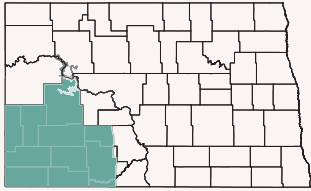
Mirror Lake (040) – South side of Hettinger. Bullheads up to a half-pound abundant. Good number of channel catfish up to 5 pounds (stocked annually). Good number of walleye up to 3 pounds. Some northern pike up to 3 pounds, bluegill up to a half-pound and mostly small yellow perch. (Fishing pier).
North Lemmon (042) – 5 miles north of Lemmon, S.D. Rainbow and brown trout stocked in 2024. Some brown trout up to 2 pounds. Small yellow

Walleye from Devils Lake.





SOUTHWEST FISHERIES DISTRICT



perch abundant. Some bluegill up to three-quarters of a pound. Good numbers of largemouth bass up to 4 pounds and walleye up to 8 pounds. (Fishing pier).

BILLINGS

Easy Hill Dam (499) – 2 miles south, 6 miles west, 5.3 miles south, .5 miles northeast of Belfield. Abundant small bluegill, with some fish up to 1 pound. Adult largemouth bass stocked in 2024. (No ramp).

BOWMAN COUNTY

Bowman-Haley Dam (085) – 11 miles south, 8 miles east, 2 miles south of Bowman. Fair number of walleye up to 5 pounds and northern pike up to 10 pounds. Good number of white bass up to 1 pound and smallmouth bass up to 2 pounds. Some yellow perch and crappie up to a half-pound. Abundant

bullhead up to 1 pound. Carp up to 15 pounds abundant, good for bowfishing. (Fishing pier).

Gascoyne Lake (086) – 1.5 miles northwest of Gascoyne. Abundant northern pike, with some fish up to 7 pounds. Common carp and green sunfish abundant at times.

Kalina Dam (087) – 2 miles west, 1 mile south, 1 mile west, 1 mile south of Bowman. Total winterkill in 2022-23 on yellow perch, black crappie and bluegill. Good number of northern pike remain. Adult yellow perch and bluegill stocked in 2023. (No ramp).

Lutz Dam (519) – 2.5 miles south, 2 miles west, .75 miles north of Griffin. Rainbow trout stocked annually. Abundant small bluegill, some yellow perch and black crappie. (No ramp).

Spring Lake (088) – 1 mile south, 4 miles west of Rhame. Near total

winterkill in winter 2022-23. Fingerling walleye and adult perch and bluegill stocked in spring 2023.

DUNN COUNTY

BarZ Dam (664) – 8 miles north, 3 miles west, 2 miles north, 3 miles northwest of Killdeer. Adult bluegill stocked in 2024. (No ramp).

Lake Ilo (131) – 1 mile west, 1 mile south of Dunn Center. Low water levels due to issues with the dam. Boat ramp not usable. Contact U.S. Fish and Wildlife Service with questions. (Fishing pier).

GOLDEN VALLEY COUNTY

Beach City Pond (657) – Southwest side of Beach. Rainbow trout stocked annually. (Fishing pier, no ramp).

Camels Hump Lake (150) – Northeast of Sentinel Butte I-94 Exit 10. Rainbow and brown trout stocked in 2024.

Abundant small largemouth bass, with a few up to 4 pounds and bluegill up to a half-pound.

Odland Dam (151) – 7 miles north of Beach. Small walleye and small yellow perch abundant. Good numbers of bluegill up to 1 pound. (Fishing pier).

Williams Creek Dam (152) – 5 miles south, 2 miles east, 2 miles south, 3 miles east, 1.25 miles south, .75 miles southwest of Golva. Small yellow perch abundant, with some up to a half-pound. A few larger walleye. (No ramp).

GRANT COUNTY

Heart Butte Reservoir (160) – 15 miles south of Glen Ullin. Good number of walleye, with some fish up to 8 pounds, catfish up to 12 pounds, pike up to 10 pounds, white bass up to 2 pounds, smallmouth bass up to 2 pounds and yellow perch up to 1 pound. Some crappie up to 1 pound and bluegill up to a half-pound. Abundant bigmouth buffalo up to 40 pounds and bullheads up to 2 pounds. Some carp up to 20 pounds. (Fishing pier).

Raleigh Reservoir (163) – 3.5 miles west, .25 miles south of Raleigh.

Abundant small bluegill with some up to three-quarters of a pound. Abundant small walleye and yellow perch with some perch up to a half-pound. (Fishing pier).

Sheep Creek Dam (164) – 4 miles south, .5 miles west of Elgin. Catchable-sized rainbow and brown trout stocked in spring 2024. Good number of crappies up to one-third of a pound and bluegill up to a half-pound. Good number of small walleye and small largemouth bass. (Fishing pier).

HETTINGER COUNTY

Blickensderfer Dam (176) – 3.5 miles south, 1 mile east, .5 miles south of Mott. Good numbers of bluegill and smaller northern pike, some smaller yellow perch (No ramp).

Castle Rock Dam (174) – 2 miles west, 1.5 miles south, 2 miles west, .5 miles south of Mott. Rainbow trout stocked annually.

Indian Creek Dam (171) – 1.5 miles west, 2 miles south, 2 miles west, 3

miles south of Regent. Abundant walleye up to 7 pounds, smallmouth bass up to 4 pounds and yellow perch up to a half-pound. Fair number of bluegills up to 1 pound. Some largemouth bass up to 3 pounds. (Fishing pier).

Larson Lake (173) – .5 miles north and 2 miles east of Regent. Fair number of small yellow perch and northern pike.

Mott Watershed Dam (175) – North side of Mott. Rainbow trout stocked annually. Small bluegill and green sunfish abundant. Few largemouth bass up to 2 pounds. Adult smallmouth bass stocked in 2023 and 2024. (Fishing pier).

MORTON COUNTY

Danzig Dam (243) – 2 miles north, 1.4 miles west, .2 miles north of I-94 Exit 120. Good numbers of northern pike up to 15 pounds and small yellow perch. Fair number of walleye up to 4 pounds.

Gaebe Pond (025) – 1.5 miles west of New Salem. Rainbow trout stocked annually. Adult catfish up to 5 pounds stocked most years. Some small perch, crappie and bluegill. (Fishing pier, no ramp).

Glen Ullin Reservoir (238) – Northwest side of Glen Ullin. Catchable-sized rainbow trout stocked annually. (No ramp).

Krieg's Pond (705) – .5 miles east of Hebron. Catchable-sized trout, yellow perch and catfish stocked most years. (No ramp).

SIoux COUNTY

Labow Lake (714) – 4 miles north, 2 miles west, 1 mile north, .5 miles east, .5 miles north of Thunderhawk, S.D. Small bluegill abundant and some largemouth bass. (No ramp).

Larson Lake (090) – 4 miles north, 1 mile west, .2 miles south of Thunderhawk, S.D. Small bluegill and green sunfish abundant. Some largemouth bass. (No ramp).



Largemouth bass from Fish Creek Dam.



Northern pike.

SLOPE COUNTY

Cedar Lake (322) – 8 miles south, 5 miles west of the junction of ND highways 21 and 22. Good number of small northern pike and a fair number of yellow perch. Good number of small walleye.

Davis Dam (323) – 16 miles west, 4 miles north of Amidon. Rainbow trout stocked annually. Abundant bluegill up to a half-pound and largemouth bass up to 5 pounds.

STARK COUNTY

Belfield Pond (332) – Southwest side of Belfield. Dam de-watered in 2024 for repairs, winterkill likely. Re-stocking to occur in spring 2025 depending on water levels. (Fishing pier).

Dassinger Pond (328) – 3.5 miles south, 2 miles east and south, 2.6 miles south of Exit 72. Walk through the gate 400 yards west to the pond. No motor vehicles inside gate. Small bluegill and largemouth bass abundant, with a few larger fish. (No ramp).

Dickinson Dike (331) – Southwest side of Dickinson. Abundant small bluegills, black crappie and yellow perch. Catchable-sized trout and catfish stocked in 2024. (Fishing pier).

Dickinson Reservoir (330) – 2 miles west of Dickinson. Good number of walleye up to 5 pounds, yellow perch up to a half-pound, crappie up to 1 pound, catfish up to 10 pounds and bluegill up to 1 pound. Fair number of pike up to 15 pounds. Abundant bullheads up to 1 pound and carp up to 8 pounds. (Fishing pier).

Slater Pond (503) – From I-94 Exit 84, .75 miles north, 1 mile east, .5 miles north, .5 miles east. Small yellow perch abundant. (Fishing pier, no ramp).

RIVERS AND LAKES

Cannonball River (388) – In Slope, Hettinger, Grant and Sioux counties. Carp abundant most of the time. Fair walleye, northern pike and catfish numbers. (No ramp).

Heart River (390) – In Stark, Grant and Morton counties. Carp and buffalo abundant most of the time. Small-mouth bass abundant. Some walleye, northern pike and catfish during spring spawning. (No ramp).

Little Missouri River (410) – Southwestern part of state. Catfish up to 10 pounds abundant. Some sauger, northern pike and walleye during spring spawning. (No ramp).

NORTH CENTRAL FISHERIES DISTRICT

Dave Fryda, district fisheries supervisor, Riverdale

BOTTINEAU COUNTY

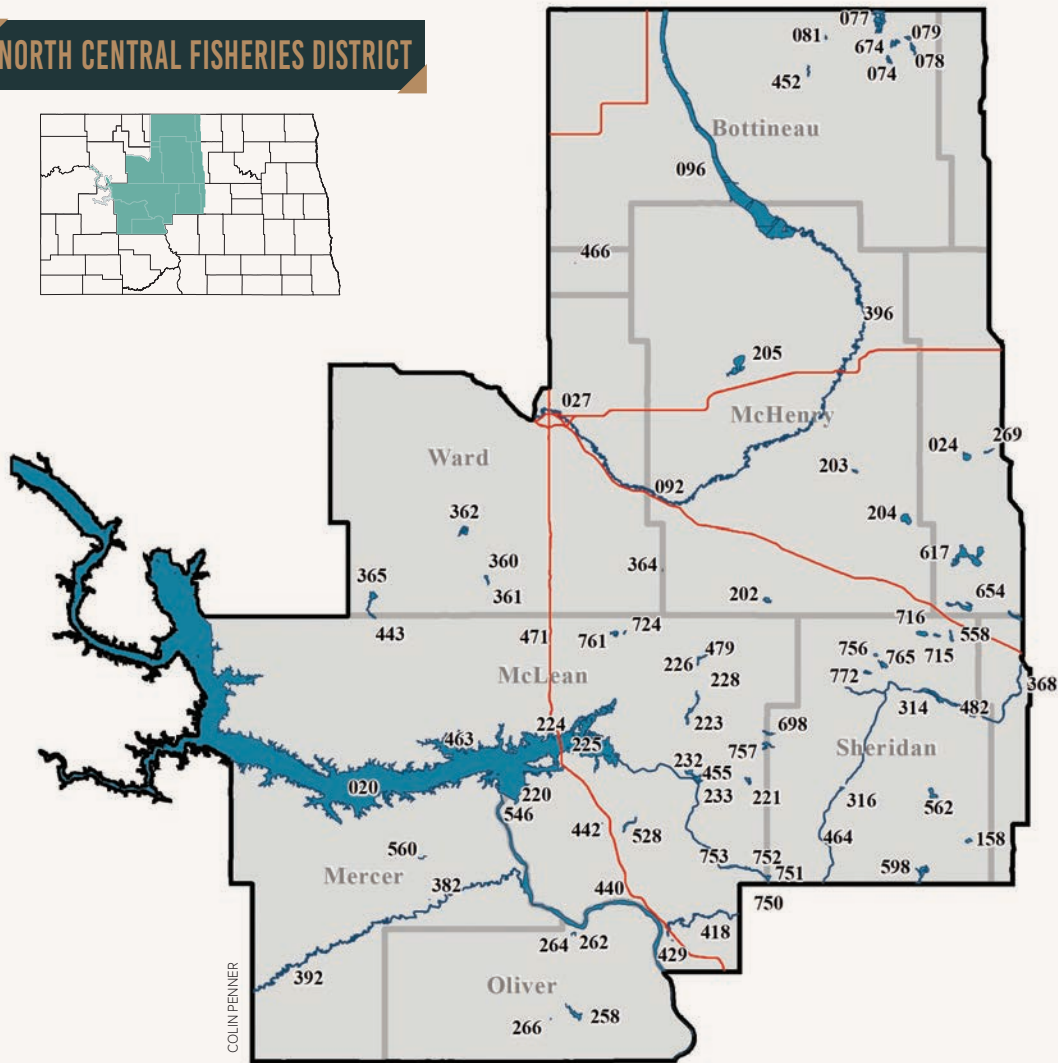
Carbury Dam (452) – 1 mile south, 1 mile west of Carbury. Decent number of 18- to 22-inch northern pike. (Fishing pier).

Lake Metigoshe (077) – 9 miles north, 4 miles east, 1 mile north of Bottineau. Several sizes of bluegill, including some large fish, along with some nice crappie. Good number of walleye in a wide range of sizes, including fish up to 26 inches. Good pike fishing, with some large fish. (Fishing pier).

Long Lake (078) – 9 miles north, 7 miles east, 1 mile south, 1 mile east, .5 miles south, .3 miles east of Bottineau. Good pike and walleye populations. Walleye population has a variety of sizes with fish up to 25 inches. Fair number of small yellow perch.

Loon Lake (674) – 9 miles north, 4 miles east, 2 miles south, 2 miles east, .5 miles north of Bottineau. Very good walleye population, with a variety of sizes including fish up to 25 inches. Fairly abundant population of mostly

NORTH CENTRAL FISHERIES DISTRICT



small yellow perch. (No ramp).

Pelican Lake (079) – 9 miles north, 8 miles east, .5 miles southwest of Bottineau. Decent number of northern pike, some good-sized fish.

Strawberry Lake (081) – 9 miles north, 3 miles west, .5 miles south of Bottineau. Rainbow trout stocked annually. (Fishing pier).

Thompson Lake (074) – 9 miles north, 4 miles east, 2 miles south, 1 mile east, 1 mile south of Bottineau. Mostly small yellow perch abundant. (No ramp).

BURLEIGH COUNTY

New Johns Lake (750) – 11.8 miles south, 3 miles east of Mercer. Decent number of walleye, with many large

fish up to 27 inches. Excellent small-mouth bass fishery, with large fish present. Small perch abundant. Periodically stocked with muskies. (Fishing pier).

MC HENRY COUNTY

Buffalo Lodge Lake (205) – 2 miles east, 3 miles north, 2 miles east of Granville. Good numbers of northern pike and walleye. A few larger fish of both species. (Fishing pier).

Cottonwood Lake (202) – 2.5 miles north of Butte. Good walleye numbers, with a few larger fish up to 26 inches. Low number of northern pike. Small perch abundant. (Fishing pier).

George Lake (203) – 13 miles north,

1 mile east, 1.3 miles north, .5 miles east of the junction of U.S. Highway 52 and ND Highway 14. Partial winterkill in 2023. Reduced number of mostly smaller pike present. Low perch numbers. (Fishing pier).

Poynter's Pond (092) – 3.2 miles northwest, .2 miles north of Velva. Annual winterkill lake managed for seasonal fishery with spring stocking of adult fish. (No ramp).

Round Lake (204) – 10 miles north, 1.5 miles west of Anamoose. Moderate numbers of pike and walleye. Mostly small yellow perch abundant.

MCLEAN COUNTY

Brush Lake (221) – 3 miles north of



Fishing for pike.

Mercer. Significant winterkill in 2023. Most sportfish eliminated but some adult pike remained. Restocked with adult bluegill and fry and walleye fingerlings in 2023 and 2024. (Fishing pier).

Camp Lake (479) – 17.5 miles north, 2 miles east of Turtle Lake. Likely winterkill in 2023. Fishery remains incidental from movement of fish from Strawberry Lake. (No ramp).

Camp Loop Pond (546) – 3 miles southwest of Riverdale on U.S. Army Corps of Engineers' downstream campground. Catchable-sized rainbow trout stocked annually. A few large trout caught in early spring. (Fishing pier, no ramp).

Coal Lake (528) – 3 miles south, 1.5 miles east, .75 miles north of Underwood. Very good population of nice walleye, with fish up to 24 inches. Abundant and mostly small yellow perch. Fathead minnow abundance has been reduced, and walleye fishing was good in 2024. (No ramp).

Crooked Lake (223) – 10 miles north, .2 miles east, .1 mile south of Turtle Lake. Major winterkill in 2023. Restocked with adult yellow perch and walleye fry and fingerlings in 2023 and walleye fingerlings and adult bluegill in

2024. Exceptional walleye year-class established from 2023 stocking.

Custer Mine (224) – 4 miles east, 2 miles south of Garrison. Poor performance and excessive bird predation on annual spring stockings will change future management. Fishery is now managed with annual spring stocking of adult game fish.

East Park Lake (752) – 9 miles south of Mercer. Fair walleye numbers, with some larger fish. Fair number of northern pike. (Fishing pier).

Lake Audubon (225) – North of Coleharbor. Walleye numbers below long-term average but size structure is improved. Excellent smallmouth bass fishery, with trophy-sized fish abundant. A good muskie fishery. (Fishing pier).

Lake Brekken (232) – 1.5 miles north of Turtle Lake. Decent number of walleye, with some fish up to 24 inches. Mostly smaller perch abundant. (Fishing pier).

Lake Gertie (724) – 1 mile south of Benedict. Good numbers of northern pike and walleye, some larger fish. Walleye up to 27 inches present. (No ramp).

Lake Holmes (455) – 1 mile northeast of Turtle Lake. Fair number of walleye,

with some larger fish. Small perch abundant.

Lightning Lake (233) – .5 miles east of Turtle Lake. A quality trout fishery with some large fish. Stocked annually with rainbow trout. (Fishing pier).

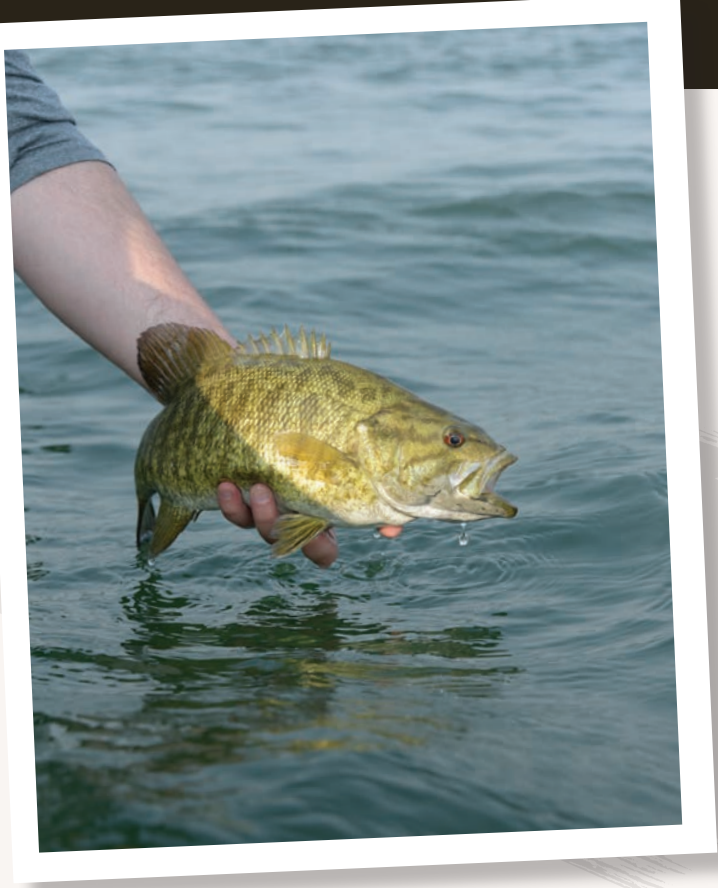
Max City Pond (471) – Southeast corner of Max. New community pond that winterkills annually. Managed by annual spring stocking of adult sportfish. (No ramp).

ND 4-H Pond (440) – 1.5 miles west, .3 miles south of Washburn. Small community pond that winterkills annually. Managed with annual spring stocking of adult gamefish. (No ramp).

Painted Woods Creek (418) – 5 miles southeast of Washburn. Fair number of northern pike. Walleye fishing can be occasionally good in early spring. (No ramp).

Painted Woods Pond (429) – .6 miles south and .25 miles west of the junction of U.S. Highway 83 and ND Highway 1804. Stocked annually with catchable-sized rainbow trout. (No ramp).

Pelican Lake (757) – 7 miles north, 2 miles east, .2 miles north of Mercer. Good numbers of pike and smaller perch. (No ramp).



Smallmouth bass

Riverdale City Pond (220) – North side of Riverdale. Popular pond for kids and family outings. Lots of small bluegill and bass. Stocked annually with catchable-sized rainbow trout. (Fishing pier, no ramp).

Scooby Lake (761) – .5 miles south, 1 mile west, .3 miles south of Benedict. Complete winterkill in 2023. Restocked with walleye fry and fingerlings in 2023. (No ramp).

Strawberry Lake (226) – 17.5 miles north, 2 miles east of Turtle Lake. Good pike and fair walleye populations. Lots of small perch and bluegill.

Triangle Y Pond (463) – 4 miles west, 1.5 miles south, 1 mile west, 1 mile south, 1 mile west, .5 miles south of Garrison. Small pond stocked with bluegill and crappie, used mostly by Triangle Y kids. (Fishing pier, no ramp).

Underwood Pond (442) – Southwest side of Underwood. Access through golf course gate on the southeast side. Seasonal pond managed with spring stocking of rainbow trout. Pond dries up by mid/late summer. (No ramp).

West Park Lake (753) – 9 miles south, 3 miles west of Mercer. Decent numbers of walleye and northern pike. Some larger pike and walleye present. Small perch abundant. (No ramp).

MERCER COUNTY

Harmony Lake (560) – 6 miles north, 1 mile west of Hazen. Good numbers of small- to medium-sized bluegill and crappie. Some northern pike. Stocked annually with rainbow trout in spring. (Fishing pier).

Hazen Creek (382) – West end of Hazen. Catchable-sized rainbow trout stocked annually in spring. (No ramp).

OLIVER COUNTY

East Arroda Dam (262) – 1 mile east of Fort Clark ND Highway 200A. Fair number of pike, with some larger fish. Decent number of crappie and mostly smaller perch. Earthen fishing piers available for shore-fishing access.

Nelson Lake (258) – 5 miles east, 3 miles south of Center. Best largemouth bass lake in the state. Open water year-round allows warmwater

fish to grow better than in other lakes. Quality-sized bluegill and crappie abundant. (Fishing pier).

Oliver County Sportsmen's Pond (266) – 4 miles south, .5 miles west of Center. Catchable-sized rainbow trout stocked annually. (No ramp).

West Arroda Dam (264) – 1 mile east of Fort Clark ND Highway 200A. Northern pike abundant. Good number of bluegill and a fair population of smaller crappie. Earthen fishing piers available for shore-fishing access.

PIERCE COUNTY

Antelope Lake (617) – 6.7 miles north, 3 miles east, 1 mile north, 2 miles east, 2 miles south of Anamoose. Good number of walleye from 15-22 inches. Low abundance of quality-sized perch.

Balta Dam (269) – .5 miles south of Balta. Decent number of smaller northern pike.

Clear Lake (654) – 6 miles east, .7 miles south of Anamoose. Good number of quality-sized walleye from 14-22 inches. Yellow perch numbers low. (No ramp).

Davis Lake (024) – 2 miles west, 1.5 miles south of Balta. Low abundance of northern pike.

RENVILLE COUNTY

Glenburn Pond (466) – North side of Glenburn. Small pond stocked annually with catchable-sized trout. Adult perch and bluegill stocked periodically. (Fishing pier, no ramp).

SHERIDAN COUNTY

Barreth Lake (158) – 2 miles south, 2 miles east, 2 miles south, .6 miles west of Goodrich. High number of small yellow perch. (No ramp).

Bender Lake (715) – .5 miles south, 4 miles west, .5 miles south of Martin. Moderate abundance of smaller yellow perch. (No ramp).

Cherry Lake (698) – 7 miles north, 3

miles east, 2 miles north, .3 miles west of Mercer. Fair number of northern pike, with some quality-sized fish. Fair number of small yellow perch. (No ramp).

Coal Mine Lake (482) – 14 miles south, 5 miles east of Anamoose. Significant winterkill in 2023 for second winter in a row greatly reduced fish populations. Low abundance of small northern pike. (Fishing pier).

Davis WPA (598) – 8 miles south, 1 mile east of Denhoff. Good walleye population, with larger fish up to 28 inches. High abundance of small yellow perch.

Heckers Lake (751) – 9 miles south, 2.4 miles east of Mercer. Good number of walleye, with fish up to 26 inches. Decent numbers of pike and smallmouth bass. Small yellow perch abundant. (No ramp).

Hinsz Lake (765) – 8 miles south, 3 miles west, 1 mile south, .6 miles west, .7 miles northwest of Anamoose. Good numbers of walleye and northern pike. Mostly smaller yellow perch.

Kaibel Lake (756) – 10.2 miles south of Drake. High abundance of small perch. (No ramp).

Miller Lake (772) – 18 miles north, 2 miles east, .2 miles south of McClusky. Complete winterkill in 2023. Stocked with adult yellow perch in 2023. (No ramp).

Mud Lake (716) – 4.5 miles south of Anamoose. Significant winterkill likely in 2023. (No ramp).

Sheyenne Lake (314) – 13.5 miles south, 1.5 miles east, .4 miles north of Anamoose. Pike stocked periodically. (No ramp).

South (Hoffer) McClusky (316) – 2 miles north, 1 mile west of McClusky. Good numbers of walleye and pike. Some good-sized bluegill and crappie. (Fishing pier).

Stober Lake (562) – 9 miles east, 2

miles north, 2 miles east of McClusky. Good walleye population, with fish up to 25 inches. Low yellow perch population, with some large fish. New boat ramp completed in 2024.

Wolf Lake (558) – .5 miles south, 1.8 miles west of Martin. Substantial winterkill in 2023. (No ramp).

WARD COUNTY

Hiddenwood Lake (443) – 8 miles south of Makoti. Fair number of walleye, with some large fish. High abundance of small yellow perch. Some larger-sized smallmouth bass. (Fishing pier).

Makoti Lake (365) – 6 miles south of Makoti. High number of northern pike, with some larger fish. High abundance of small yellow perch.

North Carlson Lake (360) – 10 miles east of Ryder. Significant winterkill in 2023. Low abundance of northern pike. Restocked with adult yellow perch in 2023.

Rice Lake (362) – 4 miles north, 7 miles east, 2 miles north of Ryder. Abundant northern pike population. Low walleye numbers. High numbers of small yellow perch and bluegill. (Fishing pier).

South Carlson Lake (361) – 10 miles east of Ryder. Decent numbers of

northern pike and small yellow perch. (Fishing pier).

State Fair Pond (027) – North end of state fairgrounds. Small pond stocked annually with catchable-sized trout and panfish. (Fishing pier, no ramp).

Velva Sportsmen's Pond (364) – 7 miles south, 1.5 miles west, 1 mile south, .5 miles west of Velva. Consistently a quality fishery for nice-sized rainbow and brown trout. Fair number of smaller largemouth bass. (Fishing pier).

RIVERS AND LAKES

J Clark Saylor NWR (096) – .5 miles north, 5 miles east of Upham. Some northern pike fishing opportunities in summer. (No ramp).

Knife River (392) – In Dunn and Mercer counties. Connected to the Missouri River, so a variety of fish species available.

McClusky Canal (464) – Central part of state in McLean, Burleigh and Sheridan counties. Excellent smallmouth bass fishery, with some larger fish. Variety of fish species available. (Fishing pier, no ramp).

Souris River (Mouse River) (396) – North central part of state. Fair numbers of pike, walleye and perch. (Fishing pier).



SOUTH CENTRAL FISHERIES DISTRICT

Paul Bailey, district fisheries supervisor,
Bismarck

BURLEIGH COUNTY

Apple Creek (398) – South central part of state. Lower reaches can be good for northern pike, walleye, crappie and catfish. (No ramp).

Cottonwood Park Pond (635) – On west side of Cottonwood soccer complex in south Bismarck. Adult northern pike and other species may be stocked in spring. Frequently winterkills, resulting in the lake often being fishless in mid- to late winter. Winter access may be difficult due to the closest parking

lot being gated during winter. Winter parking is available to the northeast of Cottonwood Park Pond and access is available via the paved walking path. (Fishing pier, no ramp).

Crimmins WPA (747) – 3 miles west, 11 miles north, .5 miles west of Wing. Walleye abundant and a low number of perch. (No ramp).

Lake Harriet (Arena Lake) (610) – 8 miles west, 1 mile south of Tuttle. Northern pike abundant and a low number of yellow perch. (No ramp).

Long Lake (104) – 1 mile south, 2.5 miles east of Moffit. Northern pike abundant. Contact refuge for specific angling regulations. (Fishing pier, no ramp).

McDowell Dam (101) – 4 miles east, 1 mile north of Bismarck on ND Highway 10. Bluegill abundant and largemouth bass in lower numbers. Catchable-sized rainbow trout stocked in spring. (Fishing pier).

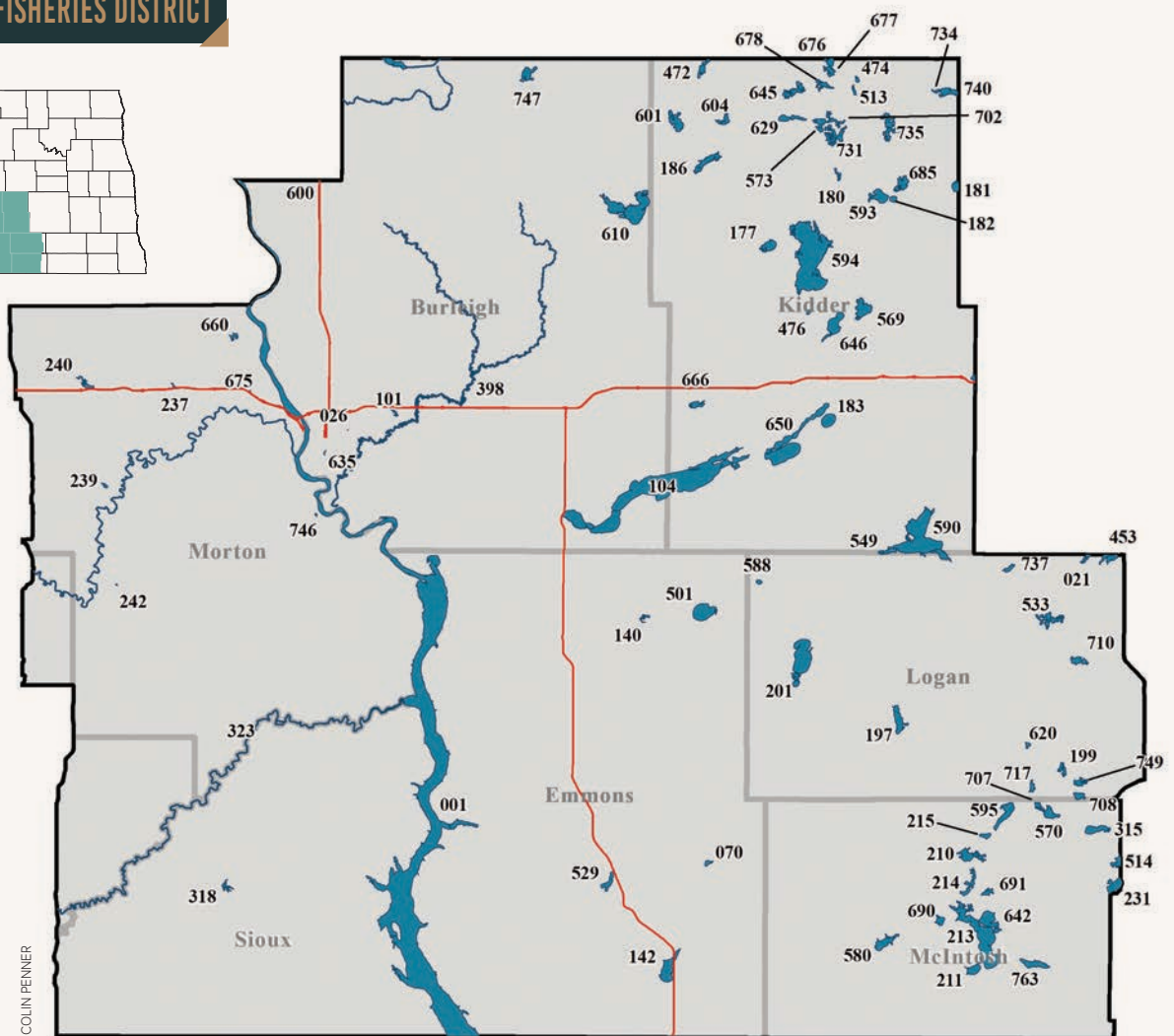
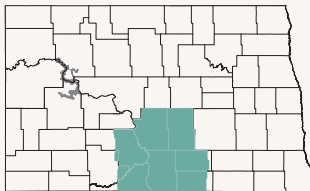
OWLS Pond (026) – Just west of Bismarck Game and Fish office. Catchable-sized rainbow trout stocked in spring and fall. Other species (bluegill, perch, catfish and white bass) may be stocked. (Fishing pier, no ramp).

Wilton City Pond (600) – South side of Wilton. Catchable-sized rainbow trout stocked in spring. (No ramp).

EMMONS COUNTY

Baumgartner Lake (529) – 6 miles

SOUTH CENTRAL FISHERIES DISTRICT



COLIN PENNER

south of Linton. Winterkill in 2022-23. Northern pike stocked in 2023 are small but abundant. (No ramp).

Braddock Dam (140) – 2 miles southwest of Braddock. Experienced a partial winterkill in 2022-23. Fair numbers of northern pike, walleye, channel catfish and yellow perch remain. Bluegill and black bullheads present.

Goose Lake (501) – 3 miles east of Braddock. Complete winterkill in 2022-23. Both northern pike and yellow perch stocked in 2023. (No ramp).

North Senger (070) – 1 mile north, 7 miles east, 3 miles north, 1.25 miles east of Strasburg. Yellow perch abundant. (No ramp).

Rice Lake (142) – 9.5 miles south, .8 miles west of Strasburg. Walleye, yellow perch and northern pike abundant.

KIDDER COUNTY

Alkaline Lake (590) – 15 miles south and 2.25 miles east of Tappen. Walleye abundant. Fair number of pike, with fish occasionally over 10 pounds. Large perch in low numbers.

Bertsch Morrison WPA (513) – 2 miles east, 10 miles north, .75 miles east of Robinson. Multiple year-classes of yellow perch. (No ramp).

Cherry Lake (177) – 15 miles north, 3 miles east of Steele. Small northern pike abundant, along with a fair number of perch.

Deer Lake (685) – 8 miles east of Robinson. Complete winterkill in 2022-23. Adult perch stocked in 2023 present in fair numbers. (No ramp).

Des Moines Lake (593) – 5.5 miles east of Robinson. Northern pike and walleye abundant. (No ramp).

Etta-Alkaline Complex (650) – 1 mile south, 2.5 miles west, 3 miles south of Dawson. Complete winterkill in 2022-23. Small northern pike present. (No ramp).

Fresh Lake (549) – 15 miles south, 7 miles east, 1 mile south of Dawson.

Walleye abundant. Pike and perch present. (No ramp).

Frettim Lake (180) – 2 miles east, 1 mile north of Robinson. Winterkill in 2022-23. Adult bluegill and walleye fingerlings stocked in 2023.

Geier Lake (740) – 12 miles east, 9.5 miles north of Robinson. Walleye abundant and perch present. (No ramp).

Helen Lake (601) – 2.5 miles west, 6 miles north of Tuttle. Consistently good northern pike fishery, with fish occasionally over 8 pounds. Perch present. (No ramp).

Horsehead Lake (594) – 10.7 miles north, .25 miles east of I-94 Exit 205. Northern pike and walleye abundant.

Jasper Lake (573) – 7 miles north, .5 miles east of Robinson. Walleye and perch in good numbers. Bluegill present.

Koenig North (676) – 12.25 miles north, 1.5 miles east of Robinson. Walleye abundant and perch present. Winter access only. (No ramp).

Koenig South (677) – 12.25 miles north, 1.5 miles east of Robinson. Multiple perch year-classes present. Winter access only. (No ramp).

Lake Geneva (666) – 2 miles south, .5 miles east of I-94 Exit 195. Complete winterkill in 2022-23. Adult perch stocked in 2023 present in fair numbers. Walleye stocked in 2024. (No ramp).

Lake Isabel (183) – 2 miles south, .5 miles east, .75 miles south of Dawson. Small northern pike abundant. Perch and walleye present in low numbers. Non-Department winter aeration may occur.

Lake Josephine (186) – 2 miles north of Tuttle. Walleye and perch abundant. A few northern pike. (Fishing pier).

Lake No. 5 (476) – 3.5 miles west, 7.5 miles north, 1.5 miles east, 1 mile south



Devils Lake walleye.

of Dawson. Northern pike abundant, but the lake frequently winterkills. (No ramp).

Lake Williams (182) – .3 miles east, .5 miles south of the town of Lake Williams. Fair numbers of walleye, northern pike, yellow perch and smallmouth bass.

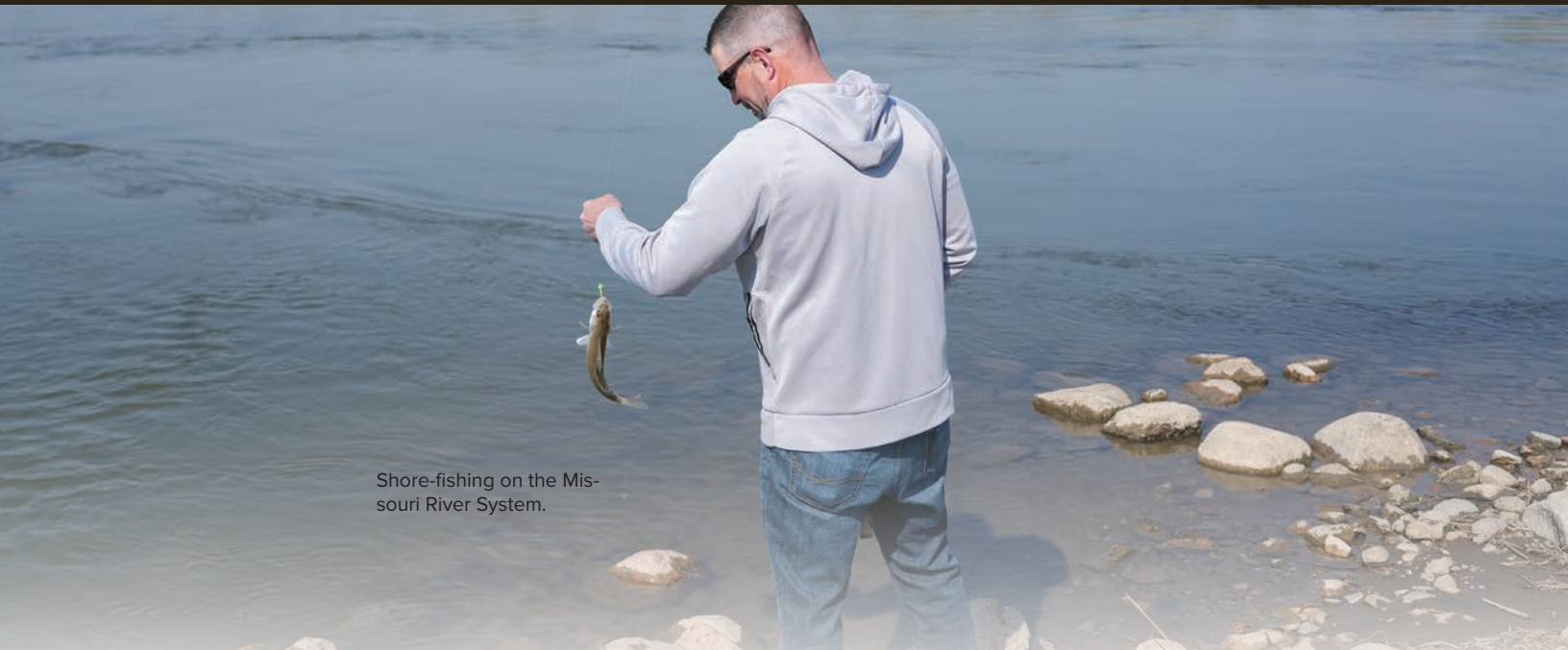
Leno Lake (604) – 1 mile east, 7 miles north of Tuttle. Winterkill in 2022-23. Adult yellow perch and walleye fingerlings stocked in 2023. Northern pike stocked in 2024. (No ramp).

Long Alkaline Lake (629) – 3 miles west, 7 miles north of Robinson. Small northern pike abundant. Perch in low numbers. (No ramp).

McPhail WMA (569) – 7 miles north, 2 miles west of Tappen. Walleye and perch in good numbers. (No ramp).

Pelican Lake (474) – 3 miles east, 11 miles north, 1 mile east of Robinson. Walleye and perch present in good numbers. (No ramp).

Plowe Lake (735) – 6 miles east, 5 miles north, 1 mile east of Robinson. Walleye, northern pike and perch in fair numbers. (No ramp).



Shore-fishing on the Missouri River System.

Rafferty Lake (734) – 12 miles east, 9.8 miles north of Robinson. Winterkill in 2022-23. Adult yellow perch stocked in 2023 and walleye stocked in 2024. (No ramp).

Remmick Lake (731) – 3 miles east, 6 miles north of Robinson. Walleye and perch in fair numbers. Winter access only. (No ramp).

Round Lake (181) – 1 mile north, 1.5 miles east of Pettibone. Fair numbers of northern pike, yellow perch and walleye. (No ramp).

Schumacher Lake (702) – 7 miles north, 1 mile east, .2 miles northeast of Robinson. Partial winterkill in 2022-23. Walleye, yellow perch and bluegill in low numbers. Walk-in access on state land on northwest portion of the lake. (No ramp).

Sibley Lake (646) – 7 miles north, 2 miles east, 1 mile south of Dawson. Walleye and perch abundant. Non-Department winter aeration may occur.

Swan Lake (678) – 10.5 miles north of Robinson. Small perch abundant, but a few larger fish present. (No ramp).

Willow Lake (645) – 9 miles north, 3 miles west of Robinson. Cormorant predation has impacted the fishery, but some walleye and yellow perch present. (No ramp).

Woodhouse Lake (472) – 12 miles north, 12 miles east of Wing. Walleye abundant and yellow perch present in fair numbers. (No ramp).

LOGAN COUNTY

Beaver Lake (197) – 8 miles south, 8 miles east of Napoleon. Northern pike abundant, with fish occasionally over 10 pounds.

Braun Lake (588) – 18 miles south, 1 mile east of Steele. Walleye and small perch abundant. (No ramp).

Kleingartner Lake (710) – 10 miles south, 5 miles west of Gackle. Fair number of northern pike and a low number of yellow perch. (No ramp).

Lepp Lake (717) – 1 mile east, 1 mile north of Lehr. Fair numbers of northern pike and yellow perch. (No ramp).

Logan Lake (453) – 1 mile west of Gackle. Walleye abundant. Fair number of small perch. (No ramp).

Marvin Miller Lake (533) – 6.5 miles south, 8 miles west, .5 miles north of Gackle. Excellent walleye fishery, with fish occasionally over 25 inches. Fair number of perch and a low number of northern pike.

Mundt Lake (199) – 3 miles east, 4 miles north, 1 mile east, .5 miles south of Lehr. Suspected winterkill in 2022-

23. Small walleye, yellow perch and smallmouth bass present. (Fishing pier).

Ost Lake (749) – 7 miles east, 1 mile north, 1 mile west, .5 miles north of Lehr. Walleye and yellow perch abundant. (No ramp).

Railroad Lake (708) – 5.5 miles east of Lehr. Fair numbers of walleye and yellow perch.

Thurn Lake (620) – 5 miles north of Lehr, .5 miles east. Good number of small walleyes. Yellow perch present. (No ramp).

West Lake Napoleon (201) – 1 mile west of Napoleon. Partial winterkill in 2022-23, but good numbers of walleye, yellow perch and northern pike remain.

Wetzel Lake (737) – 11 miles west, 1 mile south of Gackle. Northern pike abundant. (No ramp).

Zenker Lake (021) – 3.5 Miles west of Gackle. Walleye and yellow perch abundant. (No ramp).

MCINTOSH COUNTY

Clear Lake (215) – 6 miles east, 2 miles south of Wishek. Complete winterkill in 2022-23. Adult yellow perch stocked in 2023 and northern pike stocked in 2024. (No ramp).

Dollinger-Schnabel Lake (580) – 2

miles north, 5 miles west, 3 miles north of Venturia. Walleye and yellow perch abundant. (No ramp).

Dorfman Lake (642) – 5 miles north, 2 miles west of Ashley. Walleye abundant, along with fair numbers of northern pike and yellow perch. (No ramp).

Dry Lake (213) – 5 miles west, 4 miles north, 2 miles east, .5 miles south of Ashley. Excellent walleye fishery, with low numbers of northern pike and large yellow perch.

Green Lake (210) – 2 miles east, 4 miles south, 1 mile east of Wishek. Quality walleye and yellow perch fishery, with a low number of northern pike. (Fishing pier).

Harr Lake (514) – 10 miles east, 12 miles north of Ashley. Walleye abundant and yellow perch present. (No ramp).

Kislingbury Lake (763) – .5 miles east, 1.5 miles north of Ashley. Walleye and yellow perch abundant.

Lake Hoskins (211) – 3 miles west of Ashley. Fair numbers of walleye, northern pike and yellow perch. Low number of large bullheads. (Fishing pier).

Lehr WMA (570) – 2 miles east, 1 mile south of Lehr. Walleye and yellow perch abundant.

McIntosh WMA (231) – 10 miles east, 9 miles north of Ashley. Winterkill in 2022-23. Adult yellow perch stocked in 2023 and present in fair numbers. (No ramp).

Miller Lake (315) – 7.5 miles east, 2.5 miles south of Lehr. Fair number of walleye, along with low numbers of northern pike and yellow perch. (No ramp).

Mudd Lake (595) – 1 mile west of Lehr. Fair number of northern pike and a low number of yellow perch. (No ramp).

Nagel Lake (Koepplin WPA) (707) – 1.5 miles east, .5 miles south of Lehr. Walleye abundant and yellow perch present. (No ramp).

Pfeifle Lake (690) – 10 miles south, 2 miles east of Wishek. Northern pike, yellow perch and walleye in fair numbers.

(No ramp).

Pudwill Lake (214) – 9 miles south, 4 miles west, 1 mile north, .5 miles west of Lehr. Frequently winterkills, but low numbers of northern pike, walleye and perch may be present. (No ramp).

Rueb Eszlinger (691) – 7.5 miles north, 2 miles west of Ashley. Yellow perch abundant. (No ramp).

MORTON COUNTIES

Crown Butte Dam (237) – 4 miles west on access road on north side of I-94 Exit 147. Suffered winterkill in 2022-23. Catchable-sized rainbow trout and bluegill stocked in 2023. (Fishing pier).

Fish Creek Dam (239) – 8 miles south, 2 miles east, 1 mile south of I-94 Exit 134. Largemouth bass, bluegill and rainbow trout abundant. Smallmouth bass and crappie in lower numbers. (Fishing pier).

Harmon Lake (660) – 8 miles north of Mandan on ND Highway 1806. Largemouth bass, bluegill and crappie abundant. Channel catfish and northern pike in lower numbers. (Fishing pier).

Little Heart Pond (746) – 11 miles south of Mandan on ND Highway 1806. Catchable-sized rainbow trout stocked in spring. (No ramp).

Nygren Dam (242) – 6 miles north, 1 mile east, 3 miles north, .5 miles east of Flasher. Bluegill and largemouth bass abundant. (Fishing pier).

Porsborg Dam (675) – Northwest Mandan. Rainbow trout (and other species) may be stocked in spring. (No ramp).

Sweet Briar Lake (240) – 18 miles west of Mandan I-94 Exit 134. Fair numbers of walleye, northern pike, yellow perch, bluegill, crappie and channel catfish. (Fishing pier).

SIoux COUNTY

Froelich Dam (318) – 9 miles north, 2 miles west of Selfridge. Walleye and

northern pike abundant. Yellow perch, crappie, bluegill and largemouth bass present.

NORTHEAST FISHERIES DISTRICT

Bryan Sea, district fisheries supervisor, Devils Lake

BENSON COUNTY

Gravel Pit Lake (661) – 4.5 miles west of Fort Totten. No recent information. Managed by the U.S. Fish and Wildlife Service. (No ramp).

Mission Lake (662) – 5 miles south, 1.5 miles east, 2 miles south of Devils Lake. No recent information. Managed by the U.S. Fish and Wildlife Service. (No ramp).

Wood Lake (054) – 2 miles west, 1 mile south of Tokio. Bluegill common but fewer 7- to 8-inch fish available. Fair number of largemouth bass but mostly smaller fish. Fair number of 15- to 20-inch walleye, with some bigger fish present. Pike numbers are good, with most ranging from 20-30 inches. Perch are small.

CAVALIER COUNTY

Langdon City Pond (115) – South side of Langdon. Rainbow trout stocked annually. Most fish caught in May. (Fishing pier).

Mount Carmel Dam (114) – 9 miles north, 2 miles east, 2 miles north of Langdon. Walleye population is good, with several sizes available, including some big fish. Decent number of nice-sized pike in the 20- to 30-inch range and a few bigger fish. Crappie population is down a little but still OK numbers of 8- to 10-inch fish. Perch mostly smaller but some reaching 9-10 inches. (Fishing pier).

EDDY COUNTY

Adams Lake (603) – 10 miles south of Warwick. Lots of smaller perch around

6 inches, with some fish up to 10 inches. (No ramp).

Lake Coe (652) – 10 miles south of Warwick on east side of Eddy County Road 8. Good number of walleye, with several size-classes available. Good number of 18- to 23-inch fish, some 15-18 inches, and good numbers of smaller fish less than 15 inches. Good perch numbers, with most less than 7 inches.

Medicine Lake (512) – 11.5 miles south, 1.3 miles west of Warwick. Fair number of perch. (No ramp).

New Rockford Reservoir (137) – North side of New Rockford. No pike sampled but adult fish were stocked in spring 2024. These fish ranged from 20-26 inches. Low abundance of crappie and perch. Bullheads abundant. (Fishing pier, no ramp).

North Lake Washington (125) – 6 miles south of Warwick. Good walleye population, with most fish between

15-20 inches. Perch numbers are up, and most fish are less than 8 inches.

Warsing Dam (135) – 1 mile northeast of Sheyenne. Small perch and bullheads abundant. Low abundance of pike and walleye. (Fishing pier).

FOSTER COUNTY

Dry Lake (548) – 7 miles east, 5 miles south, 2 miles east of Carrington. Good number of 15- to 18-inch walleye, with some fish over 20 inches. Pike and perch in low densities. No black bullheads sampled in 2023. (No ramp).

Juanita Lake (147) – 2 miles east of Grace City. Significant winterkill in 2023. (Fishing pier).

GRAND FORKS COUNTY

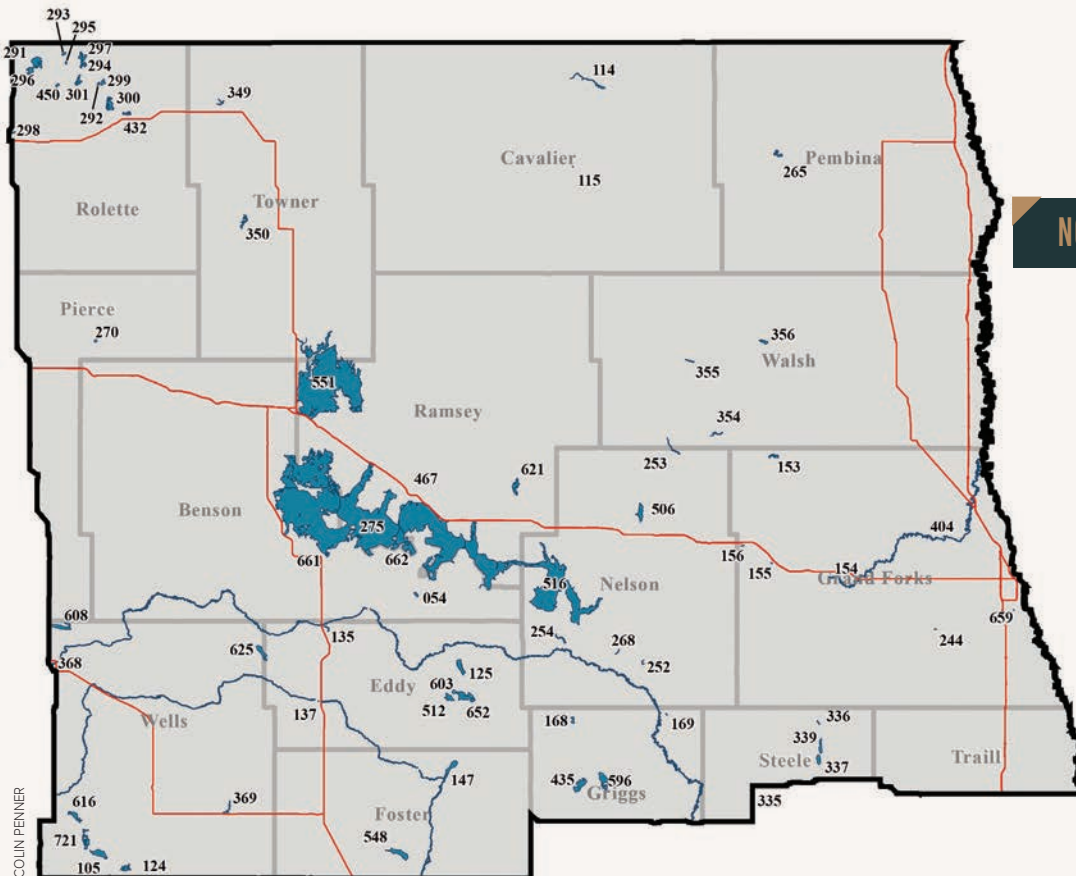
English Coulee Pond (244) – 5 miles south, 3 miles east, 1 mile south, .5 miles east of Emerado. Pike, bluegill, crappie and perch sampled in 2024. Some nice pike, with some fish up to 32 inches. Good numbers of 7- to

8-inch bluegill and lots of smaller fish. Some nice crappies up to 10 inches. Good number of perch with an average length of 8 inches. (Fishing pier, no ramp).

Fordville Dam (153) – 5 miles west, 1 mile north, .5 miles west, .5 miles north of Inkster. Few walleye 16-18 inches present, along with some smaller. Low numbers of pike, with mostly larger fish over 28 inches. Low abundance of perch. Bluegills abundant, with mostly small fish. Good crappie numbers, with multiple size-classes. Bullheads and suckers remain a management issue. (Fishing pier).

Kolding Dam (155) – 5 miles south-east, 1 mile south of Niagara on U.S. Highway 2. No fish sampled in summer 2024, but adult fish stocked in spring 2024. These fish ranged from 20-26 inches.

Larimore Dam (154) – 2 miles north-east of Larimore. Low number of



walleyes. Few Perch but smaller-sized. Fair number of pike, with multiple sizes. Few bluegills, with some up to 8 inches. Black crappie population down but a fair number of 7- to 9-inch fish. Carp present. (Fishing pier).

Niagara Dam (156) – North of Niagara. No fish sampled in summer 2024 but adult fish were stocked in spring 2024. These fish ranged from 20-26 inches.

Ryan Park Pond (659) – South side of Grand Forks. Small community fishery stocked annually with trout. Some bluegill stocked in 2023. A good place to take a kid fishing. (Fishing pier, no ramp).

GRIGGS COUNTY

Carlson-Tande Dam (169) – 1 mile south, 5 miles west of Aneta. 2024 netting survey showed small perch, fair number of bluegills less than 7-inches, with a few bigger fish, along with a few nice walleye and pike.

Lake Addie (596) – 4 miles east, 1 mile south, 1 mile west of Binford. Managed as a walleye and perch fishery. Good population of walleye, with fish of all sizes, including some bigger fish. Good number of perch, with some up to 10 inches. (No ramp).

Red Willow Lake (168) – 6 miles north, 2 miles west of Binford. Good number of 15- to 20-inch walleyes, with a few larger fish. Pike numbers are down but still good numbers of 21- to 28-inch fish. Bluegills abundant but mostly small. Perch in low densities and are typically small. Muskies present but typically not sampled in the survey.

Sibley Lake (435) – 1 mile west, 3 miles south of Binford. Good pike population, with fish averaging near 4 pounds. Fair number of perch available, with most less than 7 inches. (No ramp).

NELSON COUNTY

Lake Laretta (506) – 2 miles west, 2 miles north of Michigan. 2024 net-

Prairie lake walleye.



ting survey produced a low number of medium-sized pike. Low catch of perch, but some that survived predation are large. Number of walleye down from recent years but decent number of 15- to 18-inch fish. Some bigger fish available. (No ramp).

McVilleville Dam (252) – 1 mile east of McVilleville. Some smaller walleye less than 14 inches present. Larger pike at low densities. Perch also present at low densities. (Fishing pier).

Silver Creek Dam (268) – 4 miles west, .5 miles south of McVilleville. Small reservoir with a winter pike fishery. Some decent-sized pike present. Perch present, but usually less than 7 inches. Bullheads and suckers abundant and a management problem. (No ramp).

Tolna Dam (254) – 1 mile south, 2 miles east of Tolna. Walleye present in low densities. Some pike averaging 20-24 inches. Perch numbers fairly low. Bluegill present, averaging about 7 inches.

Whitman Dam (253) – 1.5 miles north, 3 miles east of Whitman. Keeper-sized perch, with most fish under 10 inches. Fair fishing for good-sized pike and some smaller-sized walleye. Crappie present, with some larger fish. (Fishing pier).

PEMBINA COUNTY

Renwick Dam (265) – 6 miles west, 1 mile north of Cavalier. Perch numbers declined, with most fish less than 8 inches. Some crappies, most less than 8 inches. White suckers and bullheads abundant and a management problem. (Fishing pier).

PIERCE COUNTY

Sand Lake (270) – 4 miles north of Pleasant Lake. Fair pike population ranging from 19-28 inches. Small perch abundant. Low abundance of bluegills stocked in 2024.

RAMSEY COUNTY

Fenster Lake (621) – 3 miles north, 4 miles east of Crary. Pike in fair numbers, with most fish more than 5 pounds. Fair number of 8-inch perch, with some up to 12 inches. (No ramp).

Ruger Park Pond (467) – Northeast side of Devils Lake. Adult pike stocked annually in spring. (No ramp).

ROLETTE COUNTY

Belcourt Lake (300) – 2 miles north of Belcourt. Yellow perch and northern pike abundant, with some keeper-sized fish. Black bullheads abundant.

Cain Lake (450) – 2 miles south, 9 miles west, .5 miles north of St. John.

No recent information. Managed by the U.S. Fish and Wildlife Service. (No ramp).

Carpenter Lake (291) – 12 miles west of St. John. Good pike population, with most fish longer than 25 inches. Walleye population is good and fish average about 17 inches. Good perch population, with most fish about 6-8 inches.

Dion Lake (293) – 10 miles west, 2 miles north, 1 mile east of St. John. A few larger walleyes present. Fair number of perch, with most fish under 9 inches. Good pike population, with fish ranging from 15-33 inches. Bluegill numbers increasing, with most fish about 5 inches but a fair number of 8- to 10-inch fish. (Fishing pier).

Gordon Lake (299) – 4.5 miles north, 1 mile west, .25 miles northwest of Belcourt. Walleye and yellow perch abundant, with some larger fish. Northern pike and bluegill in good numbers.

Gravel Lake (294) – 6 miles west, .5

miles north of St. John. In 2024 netting survey, pike average about 22-26 inches, with larger fish as well. Mainly small perch but a few larger ones. Bluegill mostly under 8 inches, but also some larger fish. A low density walleye population, with the larger fish about 22 inches. (Fishing pier).

Hooker Lake (295) – 8 miles west of St. John. One of a few rainbow trout lakes in the district and one of the only tiger trout lakes in the state. Trout stocked annually and reach maximum size in fall. Currently, some older, larger trout available due to lack of winterkill in recent years. Trout ranged from 10-20 inches in the 2023 netting survey. Tiger trout (brown/brook trout cross) were introduced in 2023 and average 15 inches. (Fishing pier).

Jarvis Lake (301) – .75 miles southwest, 6 miles west of St. John. Yellow perch abundant, with a few larger fish. Walleye ranging from 12-18 inches abundant. Bluegill and northern pike present.

Martin Lake (432) – 1.2 miles east, 1 mile north, .8 miles east of Belcourt. Walleye abundant. Perch present. (No ramp).

School Section Lake (296) – 9 miles north, 2.5 miles east of Dunseith. Pike and smaller perch present.

Shutte Lake (298) – .5 miles east of Dunseith. Good numbers of pike and perch. (No ramp).

Upsilon Lake (297) – 6 miles west, 1 mile north of St. John. Good number of pike of all sizes, with some large fish. Fair to low number of nice walleye, along with some smaller perch.

Fair number of bluegills that average 6 inches. Crappies present. (Fishing pier).

Wheaton Lake (292) – 4.5 miles north, 2 miles west of Belcourt. Northern pike and yellow perch fishery, with some decent keeper-sized fish.

STEELE COUNTY

Finley Dam (Lynch Lake) (335) – 1 mile south of Finley. Pike stocked regularly and provide fishing opportunities. Most pike around 20-28 inches. Some perch with a median length of 8 inches. High bullhead population a management problem. (No ramp).

North Golden Lake (339) – 10 miles east, 4 miles north, .5 miles west of Finley. Walleye numbers down from winterkill in 2023 but low numbers of 15- to 20-inch fish present. No pike sampled. Low abundance of perch. Bullheads abundant.

North Tobiason Lake (336) – 8 miles west of Hatton. Low pike density. Yellow perch numbers decent, with most fish averaging 7 inches, but some up to 10 inches. Some small walleyes present. Bullheads abundant.

South Golden Lake (337) – 10 miles east, 3 miles north, .5 miles west of Finley. Primarily a walleye and perch fishery, with some pike and bluegill. Low walleye density, with most fish over 20 inches. Perch numbers are good for keeper-sized fish, with a median length of 9 inches. Some bluegills present. Bullheads abundant and a management problem. (Fishing pier).

TOWNER COUNTY

Armourdale Dam (349) – 9 miles east, 1.5 miles north of Rolla. Good catch of 10- to 15-inch walleye. A few northern pike 27-30 inches. Fair number of 7- to 8-inch yellow perch. (Fishing pier).

Bisbee Dam Big Coulee (350) – 1 mile east of Bisbee. Low number of small walleyes. Fair number of pike, with some fish up to 27 inches. Fair num-



ber of perch, with most fish about 6 inches. (Fishing pier).

WALSH COUNTY

Bylin Dam (355) – 3 miles east, 3 miles south of Adams. Netting survey in 2024 showed a good pike population. A few smaller perch. No walleye sampled. (Fishing pier).

Homme Dam (356) – 2 miles west of Park River. Perch numbers down from years past, with fish averaging 8 inches. Crappie abundant, with most fish 6-9 inches, along with some bigger fish up to 11 inches. Lower densities of pike, with some nice-sized fish. Lower walleye density. White suckers and bullheads abundant and problematic. (Fishing pier).

Matejcek Dam (354) – 6 miles south of Lankin. After recent winterkills, fish populations comprised mostly of smaller walleye, pike and perch.

WELLS COUNTY

Georgeson Lake (625) – 3 miles north, 3 miles east, .25 miles north of Bremen. Fair number of 7- to 9-inch perch. (No ramp).

Goose Lake (608) – 3 miles north, 3 miles east, 1 mile north of Harvey. Significant winterkill in 2023 but recovering nicely. Good number of walleyes less than 15 inches. Fair number of 7- to 10-inch perch.

Harvey Dam (368) – Southeast side of Harvey. Good catch of pike, with most fish under 22 inches. Good numbers of 5- to 8-inch perch, with a few larger fish. (Fishing pier).

Hurdsfield-Tuffy Lake (616) – 3.5 miles east of Hurdsfield. Solid numbers of eating-sized walleye ranging from 14-18 inches, with some big fish. Perch numbers are low but some decent-sized fish. Carp reproducing and a management problem.

Monson Lake (124) – 1 mile south, 1 mile east, 8 miles south, 1 mile west of Bowdon. Good walleye population.

Average size is 15 inches but some larger fish up to 27 inches. A few smaller perch. (No ramp).

Silver Lake (105) – 1 mile west, 7.5 miles south, 2 miles west, 2 miles north of Bowdon. Low density perch population, with most fish about 8 inches and a few over 10 inches. (No ramp).

Silver Lake WMA (721) – 3 miles south of Chaseley. Walleyes abundant. Low abundance of perch but good-sized. Carp present and a fish management problem. (No ramp).

Sykeston Dam (369) – Northwest side of Sykeston. Fair number of pike, with multiple sizes up to 31 inches. Fair number of perch. (Fishing pier).

RIVERS AND LAKES

Turtle River (404) – In Grand Forks County. Rainbow trout stocked twice in spring and once in fall to provide a unique riverine trout fishery. Mostly a put-and-take fishery. (No ramp).

SOUTHEAST FISHERIES DISTRICT

Brandon Kratz, district fisheries supervisor, Jamestown

BARNES COUNTY

Blumers Pond (023) – 1 mile south of Valley City. Perch and bluegill present. (No ramp).

Clausen Springs (051) – 3 miles north, 1 mile east, .5 miles north of the junction of ND highways 46 and 1. Large-mouth bass and bluegill abundant. Occasional perch. (Fishing pier).

Clauson Lake (704) – 4 miles west, .5 miles south, .5 miles east of Nome. Low density perch population. (No ramp).

Eckelson Lake North (605) – 3 miles north, .5 miles east, 1 mile north, .5 miles east of Eckelson. Perch abundant. Larger fish present. (No ramp).

Eckelson Lake South (671) – 4 miles

south, 1.5 miles east of Eckelson. Moderate numbers of perch and pike. (No ramp).

Fox Lake (586) – 1 mile north, .75 miles west of Eckelson. Walleye and perch abundant. Larger fish present.

Hatchery Kids Pond (064) – 2 miles northwest of Valley City. Rainbow trout (stocked in spring) and perch. (No ramp).

Hobart Lake North (636) – 3.5 miles northwest of I-94 Exit 288. Perch abundant, with some large fish. (No ramp).

Hobart Lake South (532) – 1.4 miles south, 3.4 miles west of I-94 Exit 288. Perch abundant. (No ramp).

Island Lake (672) – 3 miles south, .5 miles east of Urbana. Small walleye abundant. (No ramp).

Kee Lake (606) – 7 miles south, 2 miles east of Eckelson. Moderate number of pike and walleye. Occasional perch. (No ramp).

Lake Ashtabula (046) – 10 miles north of Valley City. Walleye, pike and small-mouth bass abundant. Good number of larger fish. Moderate numbers of perch, crappie, white bass and bluegill. Muskellunge present. ANS alert as zebra mussels are present. (Fishing pier).

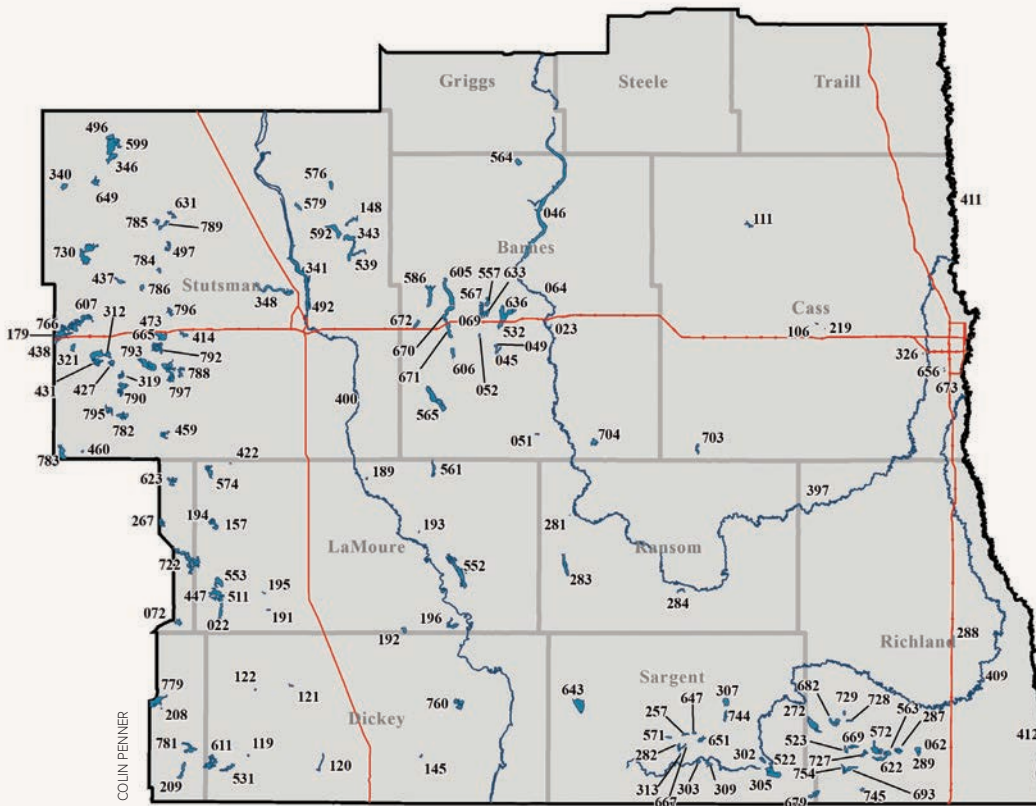
Meadow Lake (565) – 6 miles west, 6 miles north of Litchville. Moderate numbers of perch and walleye, with some larger fish. (No ramp).

Middle Eckelson (670) – 2 miles east of Eckelson. Moderate pike and walleye populations. Small perch abundant.

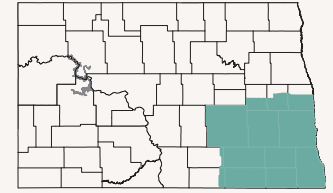
Moon Lake (049) – 2 miles west, 5.5 miles south, 4 miles west, 2 miles north of Valley City. Perch abundant. Occasional walleye, smallmouth bass and rainbow trout.

Mosher WPA (564) – 2.5 miles north, 4.5 miles east of Dazey. Walleye abundant. (No ramp).

Olson WPA (633) – 1.5 miles north of I-94 Exit 283. Moderate numbers of



SOUTHEAST FISHERIES DISTRICT



perch and pike. Large black bullhead. (No ramp).

Round Lake (069) – 1.5 miles east, 1 mile south of Sanborn. Moderate numbers of pike, perch and walleye. (No ramp).

Sanborn Lake (557) – 2 miles east, 1 mile north, .5 miles east of Sanborn. Moderately high number of pike and perch. (No ramp).

Sanborn WPA (567) – 1 mile east of Sanborn. Moderate number of pike. Low density perch population. (No ramp).

St. Mary's Lake (045) – 2 miles west, 5.5 miles south, 4 miles west, 1 mile north of Valley City. Walleye and perch abundant. (No ramp).

Sweetwater Lake (052) – 4 miles south, 1 mile east of Sanborn. Moderate numbers of crappie, perch and walleye. (No ramp).

CASS COUNTY

Brewer Lake (111) – 1 mile south, 1 mile west of Erie. Largemouth bass and

bluegill abundant. Some larger bass. Occasional walleye and crappie. (Fishing pier).

Brooks Harbor (326) – .5 miles south, .5 miles west of I-94 Exit 346. Rainbow trout and perch present. Public area on south end. (Fishing pier, no ramp).

Casselton Pond (219) – Southeast corner of Casselton. Rainbow trout stocked annually in spring. (No ramp).

Casselton Reservoir (106) – Just west of Casselton. Good number of pike. (Fishing pier).

Lindemann Lake (703) – 2 miles north, 1 mile east, .5 miles north of Enderlin. Moderate number of perch and walleye. (No ramp).

North Woodhaven Pond (656) – 2.25 miles south, .25 miles east of I-94 Exit 348. Rainbow trout stocked annually in late spring. (Fishing pier, no ramp).

South Woodhaven Pond (673) – 2.8 miles south, .25 miles east of I-94 Exit 348. Perch present. (Fishing pier, no ramp).

DICKEY COUNTY

Heinrich Lake (611) – 17.5 miles east, 1 mile south of Ashley. Low density perch population. (No ramp).

Hofer Lake (145) – 7 miles east, 1.75 miles north of Ellendale. No recent information. (No ramp).

Moores Lake (119) – 18.5 miles west, 1 mile north of Ellendale. Moderate numbers of pike and perch. (No ramp).

Pheasant Lake (120) – 6 miles west of Ellendale. Moderate numbers of bluegill, pike and perch. (Fishing pier).

Shimmin Lake (531) – 20.5 miles west, 1 mile south of Ellendale. Winterkill in 2022-23. (No ramp).

TAD Lake (760) – 8 miles west of Oakes. Low density walleye and perch populations. (No ramp).

Whitestone Lake (122) – .5 miles south, 1.5 miles west, 1 mile south of Merricourt. Winterkill in 2022-23. (No ramp).

Wilson Dam (121) – 7.5 miles west of Monango. Moderate number of pike. Low density perch population. (Fishing pier).

LAMOURE COUNTY

Alfred Lake (574) – 7 miles east, 1.5 miles south of Gackle. Low density pike and perch populations. Partial winterkill in 2022-23. (No ramp).

Bernstons Lake (022) – .5 miles north, .5 miles west of Kulm. Pike abundant. Occasional perch. (No ramp).

Boom Lake (Marion Lake) (561) – .5 miles west of Marion. Moderate numbers of pike, small perch and walleye.

Cottonwood Lake (192) – 5 miles west, 5 miles south, 1 mile west of LaMoure. Winterkill in 2022-23. (No ramp).

Diamond Lake (553) – 5.5 miles north of Kulm. Walleye abundant. Moderate number of pike.

East Kalmbach Lake (157) – .5 miles south, 4.5 miles west, .5 miles south of Jud. Winterkill suspected in 2022-23. (No ramp).

Flood Lake North (447) – 4 miles north of Kulm. Good number of pike. Low density perch and walleye populations. (No ramp).

Flood Lake South (511) – 3.5 miles north of Kulm. Fair numbers of pike and perch.

Heinrich-Martin Dam (189) – .75 miles east, .5 miles south of Adrian. Largemouth bass and bluegill abundant. Moderate numbers of crappie, perch and pike.

Kalmbach Lake (194) – .5 miles south, 4.5 miles west, .5 miles south of Jud. Good number of pike.

Kulm-Edgeley Dam (191) – 4 miles west, 2 miles south of Edgeley. Moderate numbers of pike, bluegill and perch. Low number of walleye.

Lake LaMoure (196) – 1 mile south, 1 mile east, 2.5 miles south, 1 mile west, .5 miles south of LaMoure. Moderate numbers of walleye, pike, crappie, perch and bluegill. ANS alert as zebra mussels are present. (Fishing pier).

Limesand-Seefeldt Dam (193) – 8 miles south, 3 miles west of Marion.

Pike abundant. Moderate numbers of bluegill, perch and crappie. Water low due to leaking dam.

Schlecht-Thom Dam (195) – 5 miles west, .5 miles north of Edgeley. Moderate numbers of pike and perch.

Schlenker Dam (Lehr Dam) (422) – 11 miles west, .5 miles south of the junction of U.S. Highway 281 and ND Highway 46. Moderate number of pike. Occasional perch.

Twin Lakes (552) – 4 miles north of LaMoure. Walleye and pike abundant, with the occasional perch. Some larger fish. ANS alert as zebra mussels are present.

LOGAN COUNTY

Arnies Lake (623) – 1.5 miles south of Gackle, 2 miles east, 1 mile south. Moderate numbers of pike, perch and walleye. (No ramp).

Erickson Lake (722) – 8.5 miles north, 3 miles west, 1 mile north, 1.5 miles west, .5 miles south of Kulm. Low density perch population. (No ramp).

Lake Fredonia (072) – .5 miles east, 1.5 miles south of Fredonia. Moderate number of small- to medium-sized perch. (No ramp).

Oriole Lake (267) – 8.25 miles south of Gackle. Pike abundant. (No ramp).

MCINTOSH COUNTY

Berlin Lake (779) – 9.5 miles east, 7 miles north, 2 miles east, 2 miles north of Ashley. Moderate number of small perch. (No ramp).

Blumhardt Dam (208) – 9.5 miles east, 7 miles north, 1.5 miles east of Ashley. Brown and rainbow trout.

Coldwater Lake (209) – 15.5 miles east, 1 mile south, 1 mile west of Ashley. Moderate numbers of walleye and pike, with some larger fish. High number of small perch. (Fishing pier).

Serpent Lake (781) – 13.5 miles east, 2 miles north, 1 mile east of Ashley. Moderate numbers of pike and perch. (No ramp).

RANSOM COUNTY

Dead Colt Creek (284) – 5 miles south, 1 mile east, .5 miles north, .5 miles east of Lisbon. Largemouth bass, bluegill and crappie abundant. Some larger bass. Moderate perch density. (Fishing pier).

Lone Tree Lake (Englevale) (283) – .5 miles north, 2 miles west of Englevale. Moderate number of medium-sized pike and perch. (No ramp).

Mooringsstone Pond (281) – .75 miles west of the city of Fort Ransom. Rainbow trout stocked annually in late spring. (Fishing pier, no ramp).

RICHLAND COUNTY

Bisek Slough (682) – 2 miles north, .5 miles west of Lidgerwood. Low density perch and pike populations.

Elm Lake (693) – .5 miles east, 3.5 miles south of Lidgerwood. Walleye abundant. Low number of pike. (No ramp).

Four Corners Lake (727) – 3.5 miles east, 2 miles south, .5 miles west of Lidgerwood. High density walleye population, with some larger fish. Fair number of perch and bluegill. (No ramp).

Grass Lake (272) – 2 miles west, 1 mile north, 1 mile west, 1 mile north, 1.5 miles west of Lidgerwood. Pike, perch, and crappie abundant.

Gullys Slough (572) – 4 miles east, 1 mile south of Lidgerwood. Moderate numbers of pike, perch and walleye. Occasional bluegill. (No ramp).

Hankinson Legion Memorial Pond (062) – 1.5 miles south, .5 miles west of Hankinson. Trout stocked annually in late spring. Crappie present. (No ramp).

Haus Lake (745) – 2 miles east, 7 miles south, .25 miles east of Lidgerwood. Winterkill 2022-23. (No ramp).

Horseshoe Lake (287) – 4 miles west, 1 mile south of Hankinson. Moderate numbers of pike, perch, bluegill and walleye. Some larger walleye.

Lake Elsie (289) – 1 mile south, 1.5 miles west of Hankinson. Walleye and crappie abundant. Moderate numbers of smallmouth bass, bluegill and perch. Occasional catfish. 14-inch minimum walleye length limit. ANS alert as zebra mussels are present. (Fishing pier).

Lueck Lake (622) – 6 miles east, 2.5 miles south of Lidgerwood. Walleye and perch abundant. Larger fish present. (No ramp).

Mooreton Pond (288) – 2 miles east of Mooreton. Rainbow trout stocked annually in late spring. Low number of walleye. Occasional perch, bass, crappie and channel catfish. (Fishing pier).

Moran Lake (563) – 6 miles west, 2 miles south of Hankinson. Pike and bluegill present. (No ramp).

Reiland Lake (729) – 3 miles north, .5 miles east of Lidgerwood. Moderate numbers of walleye and perch. Some larger fish present. (No ramp).

Shriner Lake (754) – 4.5 miles south, .25 miles east of Lidgerwood. Moderate numbers of pike, perch and walleye. (No ramp).

Visisel Lake (728) – 1 mile north, 2 miles east, 1 mile north, 1 mile west of Lidgerwood. Small walleye and perch present. (No ramp).

Wahl Lake (523) – 1 mile east, 2 miles south of Lidgerwood. Walleye abundant. Occasional pike. (No ramp).

West Moran Lake (669) – 2 miles east, .5 miles south of Lidgerwood. Moderate number of walleye. Some larger fish present. (No ramp).

SARGENT COUNTY

Alkali Lake (302) – 3 miles south of Cayuga. Low number of medium-sized walleye, with some large fish. (Fishing pier).

Bergh Slough (647) – 1 mile south, 2.5 miles east of Forman. Winterkill in 2022-23. (No ramp).

Boot Lake (282) – 3.5 miles south of Forman. Substantial winterkill in 2022-23. (No ramp).

Buffalo Lake (307) – 6 miles north, 1 mile east of Rutland. Moderate number of pike and small walleye.

Consolidated Lake (651) – 2 miles south, 3 miles east of Forman. Moderate numbers of pike, walleye and largemouth bass. Crappie present. (No ramp).

Deuce Lake (257) – 1.5 miles south, 1 mile east, .25 miles south of Forman. Winterkill in 2022. (No ramp).

Fiala Lake (571) – 1 mile west, 2 miles south of Forman. Moderately high number of perch. Low pike density. (No ramp).

Kraft Slough (643) – 1 mile south, 9 miles east, 2.5 miles north of Oakes. Walleye and perch abundant. Occasional pike.

Lake Tewaukon (305) – 5 miles south of Cayuga. Contact Tewaukon National Wildlife Refuge for recent information. (Fishing pier).

Lake Walstead (667) – 4 miles south, 1 mile east, 1 mile north of Forman. Good walleye, perch and pike populations. (No ramp).

Marquette Slough (522) – 3.5 miles south, .5 miles east of Cayuga. Low density pike, walleye and crappie populations. (No ramp).

Nelson Lake (313) – 4.5 miles south, .5 miles east of Forman. Pike abundant. Moderate numbers of perch and walleye. (No ramp).

Ole Breum Lake (744) – 5 miles north, 1 mile east of Rutland. Moderate number of walleye. Low number of perch and pike, with the occasional crappie. (No ramp).

Silver Lake (303) – 3 miles west, 2 miles south of Rutland. Moderate number of pike. (Fishing pier).

Sprague Lake (309) – 6 miles west, 4 miles south, 1.5 miles west of Cayuga. Contact Tewaukon National Wildlife

Refuge for recent information.

Tosse Slough (679) – 7.5 miles south, 1 mile east, 2 miles south, 1 mile east of Geneseo. Winterkill in 2022-23. Remnant pike population.

STUTSMAN COUNTY

Alkali Lake (539) – 11 miles north, 5 miles east, .5 miles south of Jamestown. Good numbers of pike, perch and walleye. Some larger walleye and pike. Ramp closed first Monday in October until freeze up each year. Idle speed only.

Bader Lake (427) – 4 miles south, 1 mile east of I-94 Exit 230. Moderate numbers of walleye, pike and perch.

Barnes Lake (346) – 1 mile east, 6 miles north of Woodworth. Walleye abundant. Moderate number of pike.

Big Mallard Marsh (599) – 9 miles north, 2.5 miles east of Woodworth. Walleye abundant. Moderate number of pike and perch.

Brooks Complex (797) – 4 miles south, 2 miles east, 2 miles south, .5 miles west of Cleveland. Perch abundant. (No ramp).

Clark Lake (340) – 1 mile west, 3 miles north, 4 miles west of Woodworth. Moderate numbers of walleye and pike. Occasional perch.

Cleveland Pond (473) – 2.5 miles west of Cleveland. High density perch population. (No ramp).

Cleveland Slough (665) – .5 miles south of Cleveland along County Road 67. Perch and walleye abundant. Occasional large pike. (No ramp).

Crystal Springs (179) – 1 mile east of Crystal Springs. Walleye and pike abundant.

Cysewski Lake (148) – 11 miles north, 4 miles east, 2 miles north, .5 miles east, 1 mile north of Jamestown.





Pike from a prairie lake.

Perch and pike present. (No ramp).

Deer Lake (497) – 11.7 miles north of Cleveland. Good number of perch.

Occasional walleye. (No ramp).

East Easter Lake (782) – 5 miles north, 4 miles east, 1 mile south of Streeter. Perch abundant. (No ramp).

Flooded House Lake (783) – 3 miles west of Streeter. Moderate number of perch. Low density walleye population. (No ramp).

Foot Lake (321) – 2 miles south, 4 miles west of Medina. Walleye and perch abundant. (No ramp).

Gaier Lake (784) – 8.5 miles north, 1 mile west of Cleveland. Low density perch population. (No ramp).

Ghost Lake (785) – 8 miles east, 3 miles south, 1 mile west of Woodworth. Low density perch population. (No ramp).

Half Way Lake (312) – 3.5 miles south of Medina. Abundant perch and occa-

sional crappie. Walleye present. (No ramp).

Hehn-Schaffer Lake (459) – 4 miles north of Gackle. Moderate numbers of perch and walleye. Low density pike population. (Fishing pier).

Hieb Lake (786) – 3.5 miles east, 6 miles north, 1 mile east of Medina. Moderate number of perch. Larger fish present. (No ramp).

Hoggarth Dam (576) – 3 miles west, 3 miles south of Courtenay. Walleye and perch abundant. (No ramp).

Jamestown Reservoir (341) – 2 miles north of Jamestown. Moderate numbers of pike and walleye. Crappie abundant. Occasional perch and smallmouth bass. 14-inch minimum walleye length limit. (Fishing pier).

Jay Nelson Lake (431) – 3.5 miles south of Medina. Walleye abundant. Moderate number of perch. (No ramp).

Lake Rau (319) – 4 miles south, 2 miles east, 2.5 miles south of Medina. Moderate number of pike, with the occasional perch. (No ramp).

Little Britches Pond (492) – Next to Jamestown Reservoir marina. Late spring rainbow trout, crappie and perch. Occasional walleye and pike. (No ramp).

Mallard Marsh North (496) – 9 miles north, 2.5 miles east of Woodworth. Walleye abundant. Moderate number of pike and perch. (No ramp).

Manley Lake (631) – 4 miles south, 9 miles west, .25 miles north of Pin-
gree. Moderate number of perch. (No ramp).

Mud and Pearl Lakes (730) – North access 11 miles north, 2.5 miles west of Medina. South access 8 miles north, 2 miles west, 1.25 miles north of Medina. Perch and walleye abundant. (No ramp).

Paris Lake (789) – 8 miles east, 3.5 miles south of Woodworth. Winterkill

in 2022-23. (No ramp).

Pipestem Reservoir (348) – 5 miles northwest, .8 miles west, 1 mile south of Jamestown. Pike, perch and walleye abundant.

Pleasant Lake (788) – 4 miles south, 2 miles east, 2 miles south, 1 mile east of Cleveland. Winterkill in 2022-23. (No ramp).

R and M Lake (579) – 4 miles east, 5 miles north of Buchanan. Walleye abundant. Moderate number of perch. Larger fish present. (No ramp).

Reule Lake (607) – 5 miles west of Medina. Walleye abundant. Moderate number of perch. Low density pike population. (No ramp).

Schock Lake (592) – 11 miles north, 3.5 miles east, 1 mile north, .5 miles west of Jamestown. Perch and walleye present. (No ramp).

School Lake (790) – 5 miles north, 5 miles east, 3 miles north of Streeter. Moderate density perch population. (No ramp).

South Stink Lake (438) – 1 mile south, 8.5 miles west, 1 mile south, 1 mile east of Medina. Moderate number of perch. (No ramp).

Spiritwood Lake (343) – 11 miles north, 4 miles east of Jamestown. Smallmouth bass abundant. Moderate numbers of walleye and perch. (Fishing pier).

Stink Lake (766) – 2.5 miles east of Crystal Springs. Walleye and perch abundant. Occasional large pike. (No ramp).

Stirton Lake (792) – 3 miles south of Cleveland. Walleye abundant. Moderate perch population. (No ramp).

Streeter Lake (460) – South side of Streeter. Total winterkill in 2022.

Sunday Lake (649) – 1 mile west, 3 miles north of Woodworth. Moderate number of perch. (No ramp).

Trautman Slough (793) – 4 miles south, 2 miles west, 1 mile south of

Cleveland. Walleye abundant. Occasional perch. (No ramp).

Wanzek Slough (414) – .5 miles west, 1 mile south, .75 miles west of Windsor. Winterkill in 2022. Winter access only. (No ramp).

West Easter Lake (795) – 5 miles north, 3 miles east of Streeter. Winterkill 2022-23. (No ramp).

Youme Lake (437) – 2 miles east, 6.5 miles north of Medina. Moderate number of perch. (No ramp).

Zimmerman Lake (796) – 2 miles north of Cleveland. Winterkill 2022-23. (No ramp).

RIVERS AND LAKES

Bois de Sioux River (412) – Southeast corner of state in Richland County. Good catfish and walleye populations. (No ramp).

James River (400) – Southeastern part of state. Moderate number of walleye. Occasional pike, perch, crappie and channel catfish.

Red River (411) – Eastern edge of state. Catfish abundant, larger fish common. Moderate number of walleye, with some larger fish. (Fishing pier).

Shyenne River (397) – Southeastern part of state. Smallmouth bass abundant. Moderate numbers of walleye and catfish. Good number of muskies in upper reaches. (Fishing pier).

Wild Rice River (409) – Southeastern part of state. Moderate numbers of catfish, walleye and pike. (No ramp).

MISSOURI RIVER SYSTEM

Russ Kinzler, Missouri River System supervisor, Riverdale

WALLEYE

Lake Sakakawea – High forage abundance and good habitat conditions have allowed walleye to maintain good body condition, good

growth rates and high abundance. Walleye abundance increased in 2024 and is above the long-term average. In 2025, anglers should find good numbers of fish from 10-20 inches, along with some larger fish found mainly in the middle to lower portions of the reservoir.

Missouri River/Lake Oahe – Walleye reproductive success has been good to excellent in recent years, but forage for these fish has been in short supply. Small walleye are abundant but tend to be in poor condition and slow growing. However, this fishery continues to provide opportunities for trophy-sized fish.

NORTHERN PIKE

Lake Sakakawea/Lake Oahe – Northern pike abundance in Sakakawea has declined from the record-high in 2012, but trophy-sized pike exceeding 15 pounds remain. Pike abundance in Oahe has declined from recent years, but average size is excellent, with fish occasionally over 20 pounds.

SALMON

Missouri River System – Salmon fishing was good in 2024. Good numbers of fish were caught with an average size of about 6 pounds and larger fish weighing about 10 pounds.

SMALLMOUTH BASS

Lake Sakakawea – The smallmouth bass population remains good with some whopper-sized fish in the system.

TROUT

Garrison Dam Tailrace – Continues to produce trophy brown and rainbow trout. The Tailrace continues to maintain a diverse quality fishery, not only for trout, but for walleye and salmon.

CATFISH

Upper Lake Sakakawea, Missouri River and Yellowstone River – Strong

catfish population, with some fishing exceeding 10 pounds.

Lake Sakakawea – Good population of catfish throughout the reservoir, but the best numbers and fishing success are in the upper end.

Garrison Dam Tailrace – Provides some good fishing for smaller catfish, especially in summer. Catfish from this area are great table fare due to the relatively cold water throughout summer.

Missouri River, south of Garrison Dam – Channel catfish are abundant and underutilized throughout the entire reach.

DEVILS LAKE BASIN

Bryan Sea, district fisheries supervisor, Devils Lake.

WALLEYE

Devils Lake – Walleye population continues to do well. Reproduction in recent years has generally been good and there are many fish less than about 18 inches. The number of 15- to 20-inch walleyes is still above average, so there are quality fish available. The number of walleyes longer than 20 inches is right about average.

Stump Lake – Walleye population is doing well. There are a variety of sizes available, with good numbers of fish. The number of fish in the size groups that anglers are most interested in are all at or above average. The number of fish 20 inches and longer are still well above average.

Irvine-Alice-Mikes Complex – Boat access conditions currently very poor, as the makeshift boat launch site a few miles north of Churchs Ferry is unusable and will remain so unless water levels rise significantly. Walleye population continues to do well. There are a variety of sizes available



Shore-fishing on Devils Lake.

and a good number of fish from 15-22 inches.

NORTHERN PIKE

Devils Lake – Northern pike will continue to provide angler opportunities in 2025. Pike can be found throughout the lake, particularly in shallower areas. The number of pike is currently a little below average. Most fish are between 20-32 inches, but trophy-sized pike are available.

Stump Lake – Northern pike numbers are about average. Most pike between 24-35 inches, but there are some larger fish.

Irvine-Alice-Mikes Complex – Northern pike still abundant. Most fish are medium-sized. Pike in Lake Irvine are underutilized, so anglers should not be shy about keeping their limit. In fact, the pike seem to be too abundant, as their body condition is relatively low at times, so keeping pike from this lake would be beneficial for the pike population as it may

help reduce competition for food.

YELLOW PERCH

Devils Lake – The number of catchable-sized yellow perch is about normal. Overall, there should be perch for anglers to pursue in 2025, and anglers may notice a few more of the 12-inch and larger “jumbo” perch than usual.

Stump Lake – Yellow perch are less abundant than usual. Also, many of the fish will likely be about 8 inches or so, with some bigger fish available. Overall, there should be perch fishing opportunities in 2025, but fishing may be slower for large perch.

Irvine-Alice-Mikes Complex – Yellow perch numbers are low, but the few perch in the lake tend to be good-sized.

WHITE BASS

Devils Lake – White bass numbers have fallen from their recent high levels, but their numbers are still

about average. The larger fish were hatched in 2015 and will probably be about 16 inches in 2025. There will also be younger fish about 14 inches as well.

Stump Lake – White bass are abundant. Most bass will likely be about 15 inches in 2025, but there should be some smaller and larger fish available.

Irvine-Alice-Mikes Complex – White bass numbers are low, but they tend to be good-sized. Fish populations in Lake Alice are similar to Lake Irvine.

2024

FISH STOCKING

REPORT



BLACK CRAPPIE

Kalina Dam, Bowman County (adult).....	3,200
Grass Lake, Richland County (adult).....	22
State Fair Pond, Ward County (adult).....	29

BLUEGILL

OWLS Pond, Burleigh County (adult).....	631
BarZ Dam, Dunn County (adult).....	1,440
Odland Dam, Golden Valley County (adult).....	5,486
Indian Creek Dam, Hettinger County (adult).....	1,938
Arnegard Dam, McKenzie County (adult).....	483
Hepper Dam, McKenzie County (adult).....	414
Watford City Park Pond, McKenzie County (adult).....	435
Brush Lake, McLean County (adult).....	563
Crooked Lake, McLean County (adult).....	500
Triangle Y Pond, McLean County (adult).....	200
Gaebe Pond, Morton County (adult).....	1,575
Clearwater Lake, Mountrail County (adult).....	420
Stanley Pond, Mountrail County (adult).....	454
White Earth Dam, Mountrail County (adult).....	392
Sand Lake, Pierce County (adult).....	3,260
Glenburn Pond, Renville County (adult).....	353
Lake Elsie, Richland County (adult).....	278
Grass Lake, Richland County (adult).....	401
Deuce Lake, Sargent County (adult).....	928
Ole Breum Lake, Sargent County (adult).....	928
Tosse Slough, Sargent County (adult).....	1,294
Labow Lake, Sioux County (adult).....	1,250
Larson Lake, Sioux County (adult).....	1,250

Dickinson Reservoir, Stark County (adult).....	4,440
Jamestown Reservoir, Stutsman County (adult).....	20
State Fair Pond, Ward County (adult).....	961
McLeod (Ray) Reservoir, Williams County (adult).....	423
West Spring Lake Pond, Williams County (adult).....	510

BROWN TROUT

North Lemmon, Adams County.....	700
Camels Hump Lake, Golden Valley County.....	700
Sheep Creek Dam, Grant County.....	700
Missouri River.....	14,012
Velva Sportsmen's Pond, Ward County.....	700
Kota-Ray Dam, Williams County.....	700

CHANNEL CATFISH

Mirror Lake, Adams County (adult).....	285
Braddock Dam, Emmons County (adult).....	630
Lake LaMoure, LaMoure County (adult).....	143
Arnegard Dam, McKenzie County (adult).....	150
Watford City Park Pond, McKenzie County (adult).....	150
Custer Mine, McLean County (adult).....	72
Max City Pond, McLean County (adult).....	160
ND 4 H Pond, McLean County (adult).....	160
Crown Butte Dam, Morton County (adult).....	155
Gaebe Pond, Morton County (adult).....	78
Harmon Lake, Morton County (adult).....	500
Krieg's Pond, Morton County (adult).....	76

Lake Elsie, Richland County (adult).....	7
Dickinson Dike, Stark County (adult).....	209
West Spring Lake Pond, Williams County (adult).....	134

CRAPPIE

Lake Elsie, Richland County (adult).....	1,552
Deuce Lake, Sargent County (adult).....	6
Ole Breum Lake, Sargent County (adult).....	6
Tosse Slough, Sargent County (adult).....	567
Jamestown Reservoir, Stutsman County (adult).....	8
Pipstem Reservoir, Stutsman County (adult).....	153
State Fair Pond, Ward County (adult).....	116

CUTTHROAT TROUT

OWLS Pond, Burleigh County (adult).....	200
Brooks Harbor, Cass County (adult).....	207
North Woodhaven Pond, Cass County (adult).....	154
Gaebe Pond, Morton County (adult).....	100
Porsborg Dam, Morton County (adult).....	150
Mooreton Pond, Richland County (adult).....	387
Dickinson Dike, Stark County (adult).....	300
Little Britches Pond, Stutsman County (adult).....	51

CHINOOK SALMON

Lake Sakakawea (smolt).....	377,620
-----------------------------	---------

LAKE STURGEON

Pembina River.....	1,001
--------------------	-------

LARGEMOUTH BASS

Easy Hill Dam, Billings County (adult).....	120
Labow Lake, Sioux County (adult).....	280
Larson Lake, Sioux County (adult).....	75
Dickinson Dike, Stark County (adult).....	177
Kettle Lake, Williams County (adult).....	105

PURE MUSKELLUNGE

Wood Lake, Benson County.....	150
Larimore Dam, Grand Forks County.....	100
Red Willow Lake, Griggs County.....	194

TIGER MUSKELLUNGE

Lake Audubon, McLean County.....	2,835
----------------------------------	-------

NORTHERN PIKE

Hatchery Kids Pond, Barnes County (adult).....	25
Sanborn Lake, Barnes County.....	25,800
Sanborn WPA, Barnes County.....	42,600
Cottonwood Park Pond, Burleigh County (adult).....	953
Lake Harriet (Arena Lake), Burleigh County.....	174,600
Casseltan Reservoir, Cass County (adult).....	100
Casseltan Reservoir, Cass County.....	2,000
South Woodhaven Pond, Cass County (adult)...	40
Pheasant Lake, Dickey County (adult).....	80
Wilson Dam, Dickey County (adult).....	40
Wilson Dam, Dickey County.....	3,300
New Rockford Reservoir, Eddy County (adult)...	107
Warsing Dam, Eddy County.....	5,400
Baumgartner Lake, Emmons County.....	26,400
Goose Lake, Emmons County.....	128,700
Juanita Lake, Foster County.....	40,200
Kolding Dam, Grand Forks County (adult).....	100
Kolding Dam, Grand Forks County.....	900
Niagara Dam, Grand Forks County (adult).....	100
Niagara Dam, Grand Forks County.....	900
Larson Lake, Hettinger County (adult).....	224
Larson Lake, Hettinger County.....	10,800
Etta-Alkaline Complex, Kidder County.....	50,600
Helen Lake, Kidder County.....	51,600
Lake Isabel, Kidder County.....	21,000
Lake No. 5, Kidder County.....	5,000
Leno Lake, Kidder County.....	20,000
Long Alkaline Lake, Kidder County.....	20,400
Alfred Lake, LaMoure County.....	40,700
Cottonwood Lake, LaMoure County.....	30,000
Flood Lake South, LaMoure County.....	50,600
Kalmbach Lake, LaMoure County.....	11,000
Schlecht-Thom Dam, LaMoure County.....	2,200
Beaver Lake, Logan County.....	50,400
Kleingartner Lake, Logan County.....	70,200
Oriole Lake, Logan County.....	40,800
Wetzel Lake, Logan County.....	20,000
Poynter's Pond, McHenry County (adult).....	150
Clear Lake, McIntosh County.....	21,600
Custer Mine, McLean County (adult).....	79
Max City Pond, McLean County (adult).....	150
Stanley Reservoir, Mountrail County.....	26,400
Silver Creek Dam, Nelson County.....	2,700
Whitman Dam, Nelson County.....	15,600
Balta Dam, Pierce County.....	9,600
Sand Lake, Pierce County.....	9,600
Ruger Park Pond, Ramsey County (adult).....	150
Bisek Slough, Richland County.....	37,600
Lake Elsie, Richland County (adult).....	26
School Section Lake, Rolette County.....	26,400

Fiala Lake, Sargent County (adult).....	12
Coal Mine Lake, Sheridan County.....	9,600
Finley Dam (Lynch Lake), Steele County.....	1,800
North Golden Lake, Steele County.....	25,200
North Tobiason Lake, Steele County.....	5,400
Bader Lake, Stutsman County.....	40,800
Clark Lake, Stutsman County.....	61,200
Cleveland Slough, Stutsman County (adult).....	64
Hehn-Schaffer Lake, Stutsman County (adult)...	50
Jamestown Reservoir, Stutsman County (adult)...	19
Lake Rau, Stutsman County.....	36,000
North Carlson Lake, Ward County.....	11,000
Harvey Dam, Wells County.....	30,000
Sykeston Dam, Wells County.....	19,800
East Spring Lake Pond, Williams County (adult).....	216

RAINBOW TROUT

North Lemmon, Adams County.....	2,800
Hatchery Kids Pond, Barnes County.....	350
Moon Lake, Barnes County.....	3,150
Strawberry Lake, Bottineau County.....	700
Lutz Dam, Bowman County.....	200
Northgate Dam, Burke County.....	4,825
McDowell Dam, Burleigh County.....	1,699
OWLS Pond, Burleigh County.....	800
Wilton City Pond, Burleigh County.....	200
Brooks Harbor, Cass County.....	700
Casseltan Pond, Cass County.....	350
North Woodhaven Pond, Cass County.....	700
Langdon City Pond, Cavalier County.....	350
Beach City Pond, Golden Valley County.....	350
Camels Hump Lake, Golden Valley County ...	2,800
Ryan Park Pond, Grand Forks County.....	850
Sheep Creek Dam, Grant County.....	2,672
Castle Rock Dam, Hettinger County.....	700
Mott Watershed Dam, Hettinger County.....	700
Blumhardt Dam, McIntosh County.....	1,400
Watford City Park Pond, McKenzie County.....	350
Camp Loop Pond, McLean County.....	700
Lightning Lake, McLean County.....	1,699
Painted Woods Pond, McLean County.....	350
Riverdale City Pond, McLean County.....	700
Underwood Pond, McLean County.....	350
Harmony Lake, Mercer County.....	700
Hazen Creek, Mercer County.....	200
Crown Butte Dam, Morton County.....	1,060
Fish Creek Dam, Morton County.....	5,015
Gaebe Pond, Morton County.....	350
Glen Ullin Reservoir, Morton County.....	700
Krieg's Pond, Morton County.....	700
Little Heart Pond, Morton County.....	700
Porsborg Dam, Morton County.....	860
Stanley Pond, Mountrail County.....	700
Missouri River.....	15,420
Turtle River.....	1,595
Oliver County Sportsmen's Pond, Oliver County.....	700
Moorystone Pond, Ransom County.....	150
Glenburn Pond, Renville County.....	350
Hankinson Legion Memorial Pond, Richland County.....	150
Mooreton Pond, Richland County.....	2,100
Hooker Lake, Rolette County.....	1,400
Davis Dam, Slope County.....	1,400
Dickinson Dike, Stark County.....	2,100
Little Britches Pond, Stutsman County.....	100
State Fair Pond, Ward County.....	350
Velva Sportsmen's Pond, Ward County.....	700

Kettle Lake, Williams County.....	700
Kota-Ray Dam, Williams County.....	2,100
McGregor Dam, Williams County.....	1,400
West Spring Lake Pond, Williams County.....	700

SMALLMOUTH BASS

Mott Watershed Dam, Hettinger County (adult).....	24
Lake Williams, Kidder County (adult).....	133
Clark Lake, Stutsman County (adult).....	55
McLeod (Ray) Reservoir, Williams County (adult).....	211

TIGER TROUT

Moon Lake, Barnes County.....	2,594
Fish Creek Dam, Morton County.....	1,700
Hooker Lake, Rolette County.....	1,035

WALLEYE

Mirror Lake, Adams County.....	11,200
North Lemmon, Adams County.....	8,000
Fox Lake, Barnes County.....	48,100
Kee Lake, Barnes County.....	29,900
Middle Eckelson, Barnes County.....	149,800
Moon Lake, Barnes County.....	634
Mosher WPA, Barnes County.....	30,600
St. Mary's Lake, Barnes County.....	10,400
Sweetwater Lake, Barnes County.....	3,900
Wood Lake, Benson County.....	13,900
Long Lake, Bottineau County.....	25,600
Loon Lake, Bottineau County.....	62,400
Lake Metigoshe, Bottineau County.....	184,000
Bowman-Haley Dam, Bowman County.....	200,800
Crimmins WPA, Burleigh County.....	60,600
New Johns Lake, Burleigh County.....	164,850
Lindemann Lake, Cass County (fry).....	200,000
Mount Carmel Dam, Cavalier County.....	41,800
TAD Lake, Dickey County.....	94,250
TAD Lake, Dickey County (fry).....	200,000
Baukol-Noonan Dam, Divide County.....	5,500
Lake Coe, Eddy County.....	53,400
Lake Coe, Eddy County (fry).....	300,000
North Lake Washington, Eddy County.....	36,000
North Lake Washington, Eddy County (fry).....	200,000
Braddock Dam, Emmons County.....	10,500
Rice Lake, Emmons County.....	120,000
Rice Lake, Emmons County (fry).....	1,000,000
Dry Lake, Foster County.....	50,400
Odland Dam, Golden Valley County.....	12,800
Fordville Dam, Grand Forks County.....	31,100
Larimore Dam, Grand Forks County.....	10,800
Heart Butte Reservoir, Grant County.....	94,650
Raleigh Reservoir, Grant County.....	12,000
Sheep Creek Dam, Grant County.....	30,400
Lake Addie, Griggs County.....	30,600
Red Willow Lake, Griggs County.....	25,600
Alkaline Lake, Kidder County.....	216,600
Des Moines Lake, Kidder County.....	50,000
Frettim Lake, Kidder County.....	10,500
Geier Lake, Kidder County.....	29,400
Lake Geneva, Kidder County (adult).....	1,555
Lake Geneva, Kidder County.....	52,500
Horsehead Lake, Kidder County.....	642,800
Horsehead Lake, Kidder County (fry).....	1,525,000
Jasper Lake, Kidder County.....	30,450
Lake Josephine, Kidder County.....	39,900
Koenig North, Kidder County.....	25,600

McPhail WMA, Kidder County (fry).....250,000
 Pelican Lake, Kidder County..... 10,500
 Plowe Lake, Kidder County..... 62,350
 Rafferty Lake, Kidder County..... 5,250
 Remmick Lake, Kidder County.....75,650
 Round Lake, Kidder County..... 18,900
 Sibley Lake, Kidder County.....167,050
 Lake Williams, Kidder County.....14,700
 Woodhouse Lake, Kidder County..... 30,800
 Boom Lake (Marion Lake), LaMoure
 County..... 19,200
 Diamond Lake, LaMoure County.....77,700
 Kulm-Edgeley Dam, LaMoure County..... 4,800
 Lake LaMoure, LaMoure County.....194,770
 Twin Lakes, LaMoure County..... 506,850
 Arnies Lake, Logan County (fry).....200,000
 Braun Lake, Logan County..... 10,500
 Marvin Miller Lake, Logan County.....27,300
 Mundt Lake, Logan County.....20,400
 Ost Lake, Logan County.....21,000
 Railroad Lake, Logan County.....20,400
 Thurn Lake, Logan County.....10,800
 West Lake Napoleon, Logan County.....207,450
 Zenker Lake, Logan County.....10,800
 Buffalo Lodge Lake, McHenry County.....102,600
 Cottonwood Lake, McHenry County.....25,300
 Round Lake, McHenry County.....100,100
 Berlin Lake, McIntosh County (fry).....500,000
 Coldwater Lake, McIntosh County..... 55,800
 Dollinger-Schnabel Lake, McIntosh County.....24,000
 Dorfman Lake, McIntosh County.....49,200
 Green Lake, McIntosh County.....39,900
 Harr Lake, McIntosh County.....21,600
 Lake Hoskins, McIntosh County.....30,000
 Kislingbury Lake, McIntosh County.....51,000
 Lehr WMA, McIntosh County..... 31,500
 Miller Lake, McIntosh County.....57,600
 Nagel Lake (Koepplin WPA), McIntosh
 County.....21,000
 Lake Audubon, McLean County.....641,150
 Lake Brekken, McLean County.....30,000
 Brush Lake, McLean County.....30,000
 Crooked Lake, McLean County.....100,600
 East Park Lake, McLean County..... 40,500
 Lake Holmes, McLean County.....50,400
 Painted Woods Creek, McLean County..... 10,500
 Strawberry Lake, McLean County.....20,400
 West Park Lake, McLean County.....80,400
 Danzig Dam, Morton County.....20,900
 Sweet Briar Lake, Morton County.....20,900
 Clearwater Lake, Mountrail County..... 16,500
 White Earth Dam, Mountrail County..... 19,800
 McVile Dam, Nelson County..... 4,800
 Tolna Dam, Nelson County.....24,400
 Devils Lake.....480,450
 Red River (fry).....125,000
 Renwick Dam, Pembina County.....20,400
 Antelope Lake, Pierce County.....201,050
 Clear Lake, Pierce County.....81,600
 Irvine-Alice-Mikes Complex, Ramsey
 County..... 807,200
 Irvine Alice Mikes Complex, Ramsey
 County (fry).....900,000
 Lake Darling, Renville County.....464,700
 Elm Lake, Richland County.....39,600
 Lake Elsie, Richland County.....94,940
 Lake Elsie, Richland County (fry).....25,000

Four Corners Lake, Richland County..... 19,200
 Grass Lake, Richland County.....192,500
 Grass Lake, Richland County (fry).....500,000
 Gullys Slough, Richland County..... 40,800
 Haus Lake, Richland County..... 4,800
 Horseshoe Lake, Richland County..... 36,000
 Lueck Lake, Richland County..... 36,000
 Mooreton Pond, Richland County..... 4,800
 Reiland Lake, Richland County..... 9,600
 Shriner Lake, Richland County.....19,200
 Vislisel Lake, Richland County..... 8,400
 Wahl Lake, Richland County..... 15,600
 West Moran Lake, Richland County.....24,000
 Belcourt Lake, Rolette County.....31,900
 Carpenter Lake, Rolette County..... 76,700
 Dion Lake, Rolette County.....11,200
 Gordon Lake, Rolette County.....12,100
 Jarvis Lake, Rolette County.....17,930
 Martin Lake, Rolette County.....13,200
 Upsilon Lake, Rolette County.....30,400
 Wheaton Lake, Rolette County..... 4,950
 Alkali Lake, Sargent County.....21,000
 Buffalo Lake, Sargent County.....51,000
 Consolidated Lake, Sargent County.....25,500
 Deuce Lake, Sargent County.....10,500
 Kraft Slough, Sargent County.....215,100
 Nelson Lake, Sargent County..... 3,000
 Ole Breum Lake, Sargent County..... 36,000
 Silver Lake, Sargent County.....15,000
 Sprague Lake, Sargent County.....25,500
 Lake Tewaukon, Sargent County.....232,500
 Tosse Slough, Sargent County (fry).....660,000
 Lake Walstead, Sargent County..... 6,000
 Davis WPA, Sheridan County.....49,200
 Heckers Lake, Sheridan County..... 67,500
 Hinsz Lake, Sheridan County.....49,300
 South (Hoffer) McClusky, Sheridan County...21,000
 Stober Lake, Sheridan County.....50,400
 Froelich Dam, Sioux County.....15,000
 Cedar Lake, Slope County.....34,200
 Dickinson Reservoir, Stark County.....101,500
 North Golden Lake, Steele County (fry).....200,000
 South Golden Lake, Steele County.....30,000
 Bader Lake, Stutsman County..... 16,000
 Barnes Lake, Stutsman County.....40,950
 Big Mallard Marsh, Stutsman County.....149,900
 Big Mallard Marsh, Stutsman
 County (fry).....500,000
 Clark Lake, Stutsman County.....40,950
 Cleveland Slough, Stutsman County..... 166,600
 Crystal Springs, Stutsman County.....47
 Foot Lake, Stutsman County.....26,000
 Hoggarth Dam, Stutsman County.....20,400
 Jamestown Reservoir, Stutsman County..... 98,800
 Jay Nelson Lake, Stutsman County..... 74,000
 Mud and Pearl Lakes, Stutsman County...300,000
 Mud and Pearl Lakes, Stutsman
 County (fry).....500,000
 Pipestem Reservoir, Stutsman County.....125,500
 R and M Lake, Stutsman County..... 15,300
 Reule Lake, Stutsman County..... 166,250
 Schock Lake, Stutsman County.....25,500
 Spiritwood Lake, Stutsman County..... 54,600
 Stink Lake, Stutsman County.....49,400
 Stirton Lake, Stutsman County.....163,700
 Trautman Slough, Stutsman County..... 73,750
 Wanzek Slough, Stutsman County.....14,700

Armourdale Dam, Towner County.....11,200
 Bisbee Dam Big Coulee, Towner County.... 35,200
 Bylin Dam, Walsh County.....9,600
 Homme Dam, Walsh County.....25,200
 Matejcek Dam, Walsh County.....20,400
 Hiddenwood Lake, Ward County.....18,700
 Rice Lake, Ward County.....29,700
 Goose Lake, Wells County..... 54,450
 Goose Lake, Wells County (fry).....400,000
 Hurdsfield-Tuffy Lake, Wells County..... 30,800
 Hurdsfield-Tuffy Lake, Wells County (fry) ..300,000
 Monson Lake, Wells County (fry).....200,000
 Silver Lake WMA, Wells County.....21,000
 Blacktail Dam, Williams County..... 19,800
 Cottonwood Lake, Williams County.....29,700
 Epping-Springbrook Dam, Williams County. 19,800
 Kota-Ray Dam, Williams County..... 4,400

WHITE BASS

OWLS Pond, Burleigh County (adult)..... 40

YELLOW PERCH

Mirror Lake, Adams County (adult)..... 1,980
 Lake Ashtabula, Barnes County (adult).....39,690
 Sanborn WPA, Barnes County (adult).....10,020
 Bowman-Haley Dam, Bowman
 County (adult).....9,000
 Lutz Dam, Bowman County (adult)..... 900
 Short Creek Dam, Burke County (adult)..... 9,851
 OWLS Pond, Burleigh County (adult).....2,986
 Heinrich Lake, Dickey County (adult).....6,780
 Hofer Lake, Dickey County (adult).....5,025
 Pheasant Lake, Dickey County (adult)..... 7,035
 TAD Lake, Dickey County (adult).....8,375
 Skjermo Lake, Divide County (adult)..... 3,960
 Larson Lake, Hettinger County (adult)..... 7,050
 Cottonwood Lake, LaMoure County (adult) ...6,375
 Diamond Lake, LaMoure County (adult).....18,540
 Flood Lake South, LaMoure County (adult) ..12,539
 Lake LaMoure, LaMoure County (adult).....35,965
 Krieg's Pond, Morton County (adult)..... 1,650
 Clearwater Lake, Mountrail County (adult) .. 3,450
 White Earth Dam, Mountrail County (adult) .. 5,940
 James River (adult).....4,020
 Lone Tree Lake (Englevale), Ransom
 County (adult).....6,375
 Lake Elsie, Richland County (adult)..... 6,253
 Grass Lake, Richland County (adult).....3,677
 Deuce Lake, Sargent County (adult).....2,496
 Fiala Lake, Sargent County (adult).....4,758
 Ole Breum Lake, Sargent County (adult)..... 2,496
 Tosse Slough, Sargent County (adult)..... 14,285
 Dickinson Reservoir, Stark County (adult).....2,772
 Hehn-Schaffer Lake, Stutsman
 County (adult).....9,270
 Jamestown Reservoir, Stutsman
 County (adult).....56,793
 Pipestem Reservoir, Stutsman
 County (adult).....54,700
 McLeod (Ray) Reservoir, Williams
 County (adult).....2,175



DEVILS LAKE BASIN

BOATING ACCESS

Following is a list of boating access sites in the Devils Lake Basin (Lake Irvine, Devils Lake, and Stump Lake). All sites have a boat ramp, courtesy dock and restrooms unless otherwise noted. Depending on runoff and lake levels, some ramps may be marginal or become unusable. For updated information, visit the North Dakota Game and Fish Department's website (gf.nd.gov) or contact the appropriate managing authority at the end of each listing.

MINNEWAUKAN DUMPGROUND – 1.5 miles south of Minnewaukan on old U.S. Highway 281. Gravel access road – Minnewaukan Community Club.

ROUND LAKE BAY – 3 miles south of Minnewaukan on U.S. Highway 281. Paved access road, trash receptacles – Minnewaukan Community Club.

GRAHAMS ISLAND STATE PARK – 10 miles west of Devils Lake on ND Highway 19, then 6 miles south. Paved access road, fish cleaning facility, developed and primitive camping, security lights, picnic shelter, trash receptacles, concession, lodging, access fee, RV dump station – North Dakota Parks and Recreation.

SCHWAB LANDING – 7 miles west of Devils Lake on ND Highway 19. Paved access road, fish cleaning facility, developed and primitive camping, security lights, picnic shelter, trash receptacles, concession, RV dump station – North Dakota Game and Fish Department.

CREEL BAY – 3 miles south of Devils Lake on ND Highway 20, then 2 miles west and .25 miles north. Paved access road, fish cleaning facility, developed and primitive camping, security lights, picnic shelter, trash receptacles – Ramsey County Park Board.

HENEGAR LANDING – 1 mile west of Devils Lake on ND Highway 19, then .75 miles south. Paved access road, fish cleaning facility, security lights, trash receptacles – Ramsey County Park Board.

SPIRIT LAKE CASINO – 6 miles south of Devils Lake on ND Highway 20/57. Paved access road, fish cleaning facility, developed and primitive camping, security lights, trash receptacles, concession, lodging, boat rental, RV dump station – Spirit Lake Casino.

EAST BAY – 3 miles south of Devils Lake on ND Highway 20. Paved access road, security lights, trash receptacles – North Dakota Game and Fish Department.

ESTENSON LANDING – 15 miles south of

Devils Lake on ND Highway 20. Paved access road, trash receptacles – North Dakota Game and Fish Department.

BLACK TIGER BAY – 16.5 miles south of Devils Lake on ND Highway 20, then 4 miles north-northeast. Gravel access road, no restrooms – North Dakota Parks and Recreation.

TOLNA LANDING (STUMP LAKE) – 3 miles north of Tolna. Gravel access road, fish cleaning facility, security lights, picnic shelter, trash receptacles – Tolna Community Club.

STUMP LAKE PARK – 11 miles south, 1 mile west of Lakota. Paved access road, fish cleaning facility, developed and primitive camping, security lights, picnic shelter, trash receptacles, concession, lodging, RV dump station – Nelson County Park Board.



MISSOURI RIVER SYSTEM

BOATING ACCESS

Following is a list of boating access sites on the Missouri River System in North Dakota. All sites have a boat ramp, courtesy dock and restrooms unless otherwise noted. For updated information, visit the North Dakota Game and Fish Department's website (gf.nd.gov) or contact the appropriate managing authority at the end of each listing.

1 SUNDHEIM PARK – 2 miles west of Cartwright on ND Highway 200, on west side of Yellowstone River and south side of ND Highway 200. Paved access road, no overnight camping allowed, no courtesy docks, security lights, picnic shelter, trash receptacles – Yellowstone Township.

2 CONFLUENCE AREA – 1.5 miles south of Buford on ND Highway 1804. Paved access road, developed and primitive camping, security lights, picnic shelter, trash receptacles – Williams County WRD.

3 LEWIS AND CLARK BRIDGE – 4 miles west of Williston on U.S. Highway 2, 3 miles south on U.S. Highway 85, on south side of Missouri River, and east side of U.S. Highway 85. Paved access road, security lights, picnic shelter – Williams County WRD.

4 LEWIS AND CLARK STATE PARK – 16 miles east of Williston on ND Highway 1804, then 3 miles south. Paved access road, fish cleaning facility, developed and primitive camping, security

lights, picnic shelter, trash receptacles, concession, lodging, access fee, RV dump station – North Dakota Parks and Recreation.

5 WHITETAIL BAY (LUND'S LANDING) – 22 miles east of Williston on ND Highway 1804. Paved access road, fish cleaning facility, developed camping, security lights, picnic shelter, trash receptacles, concession, lodging, boat rental – Williams County WRD.

6 TOBACCO GARDEN CREEK BAY – 2 miles east of Watford City on ND Highway 23, then 25 miles north and east on ND Highway 1806. Paved access road, fish cleaning facility, developed and primitive camping, security lights, picnic shelter, trash receptacles, concession, lodging, RV dump station – McKenzie County Park Board.

7 LITTLE BEAVER BAY – 32 miles northwest of New Town on ND Highway 1804, then 3 miles south. Gravel access road, fish cleaning facility, developed and primitive camping, security lights, picnic shelter, trash receptacles – Williams County WRD.

8 WHITE EARTH BAY – 28 miles northwest of New Town on ND Highway 1804, then 2 miles south, 1 mile east, 3 miles south, 3 miles east. Gravel access road, fish cleaning facility, developed and primitive camping, security lights, picnic shelter, trash receptacles, concession, RV dump station – Mountrail County Park Board.

9 SANISH BAY (AFTEM) – 1 mile north, 2 miles west of New Town. Gravel access road, no restrooms – New Town Park Board/Aftem Development.

10 NEW TOWN MARINA – 2 miles west of New Town on ND Highway 23. Paved access road, fish cleaning facility, developed and primitive camping, security lights, picnic shelter, trash receptacles, concession, RV dump station – New Town Marina Association.

11 FOUR BEARS – 4 miles west of New Town on ND Highway 23. Paved access road, fish cleaning facility, developed and primitive camping, security lights, picnic shelter, trash receptacles, concession, lodging, RV dump station – Three Affiliated Tribes.

12 POUCH POINT – 7 miles south, 2 miles east, 2 miles south, 1 mile east, 3 miles south of New Town. Paved access road, security lights, picnic shelter, trash receptacles, concession – Three Affiliated Tribes.

13 LITTLEFIELD BAY – 5 miles south, 2 miles east of New Town. Gravel access road, no restrooms, no courtesy docks – North Dakota Game and Fish Department.

14 VAN HOOK – 5 miles east of New Town on ND Highway 23, then 2 miles south. Paved access road, fish cleaning facility, developed and primitive camping, security lights, picnic shelter, trash receptacles, concession, RV dump station – Mountrail County Park Board.

15 PARSHALL BAY – 3 miles west, 1 mile south, 3 miles west, 1 mile south, 2 miles west of Parshall. Paved access road, fish cleaning facility, developed and primitive camping, security lights, picnic shelter, trash receptacles, concession, boat rental, RV dump station – Mountrail County Park Board.

16 SKUNK BAY – 14 miles northeast of Mandaree. Gravel access road, developed and primitive camping, concession, lodging – Three Affiliated Tribes/Roads Maker, Inc.

17 DEEP WATER CREEK BAY – 14 miles south of Parshall on ND Highway 37, then either 1 mile south to the corps ramp (no camping) or 2.5 miles west and .5 miles south to the county ramp (primitive camping). Gravel access road – U.S. Army Corps of Engineers/McLean County Park Board.

18 HALE MARINA – 18 miles southeast of Mandaree. Gravel access road, no restrooms, no courtesy docks – Three Affiliated Tribes.

19 MCKENZIE BAY – 22 miles southeast of Mandaree. Paved access road, fish cleaning facility, developed and primitive

camping, security lights, picnic shelter, trash receptacles, concession, lodging, RV dump station – Watford City Park Board.

20 LITTLE MISSOURI BAY – 16 miles northeast of Dunn Center. Paved access road, fish cleaning facility, security lights – Dunn County Park Board.

21 CHARGING EAGLE BAY – 12 miles north of Halliday on ND Highway 8, then 10 miles west on BIA No. 22. Gravel access road, no restrooms, fish cleaning facility, primitive camping, trash receptacles – Three Affiliated Tribes.

22 INDIAN HILLS RESORT – 11 miles west of White Shield on ND Highway 1804, then 3 miles south. Gravel access road, fish cleaning facility, developed and primitive camping, security lights, picnic shelter, trash receptacles, concession, lodging, boat rental, RV dump station – North Dakota Parks and Recreation/Three Affiliated Tribes.

23 BEAVER CREEK BAY – 12 miles north of Zap. Paved access road, primitive camping, picnic shelter, trash receptacles – Zap City Park Board.

24 DAKOTA WATERS RESORT – 15 miles north of Beulah. Paved access road, fish cleaning facility, developed and primitive camping, security lights, picnic shelter, trash receptacles, concession, lodging, boat rental, RV dump station – Dakota Waters Resort.

25 BEULAH BAY – 17 miles north of Beulah. Paved access road, fish cleaning facility, developed and primitive camping, security lights, picnic shelter, trash receptacles, lodging, RV dump station – Beulah City Park Board.

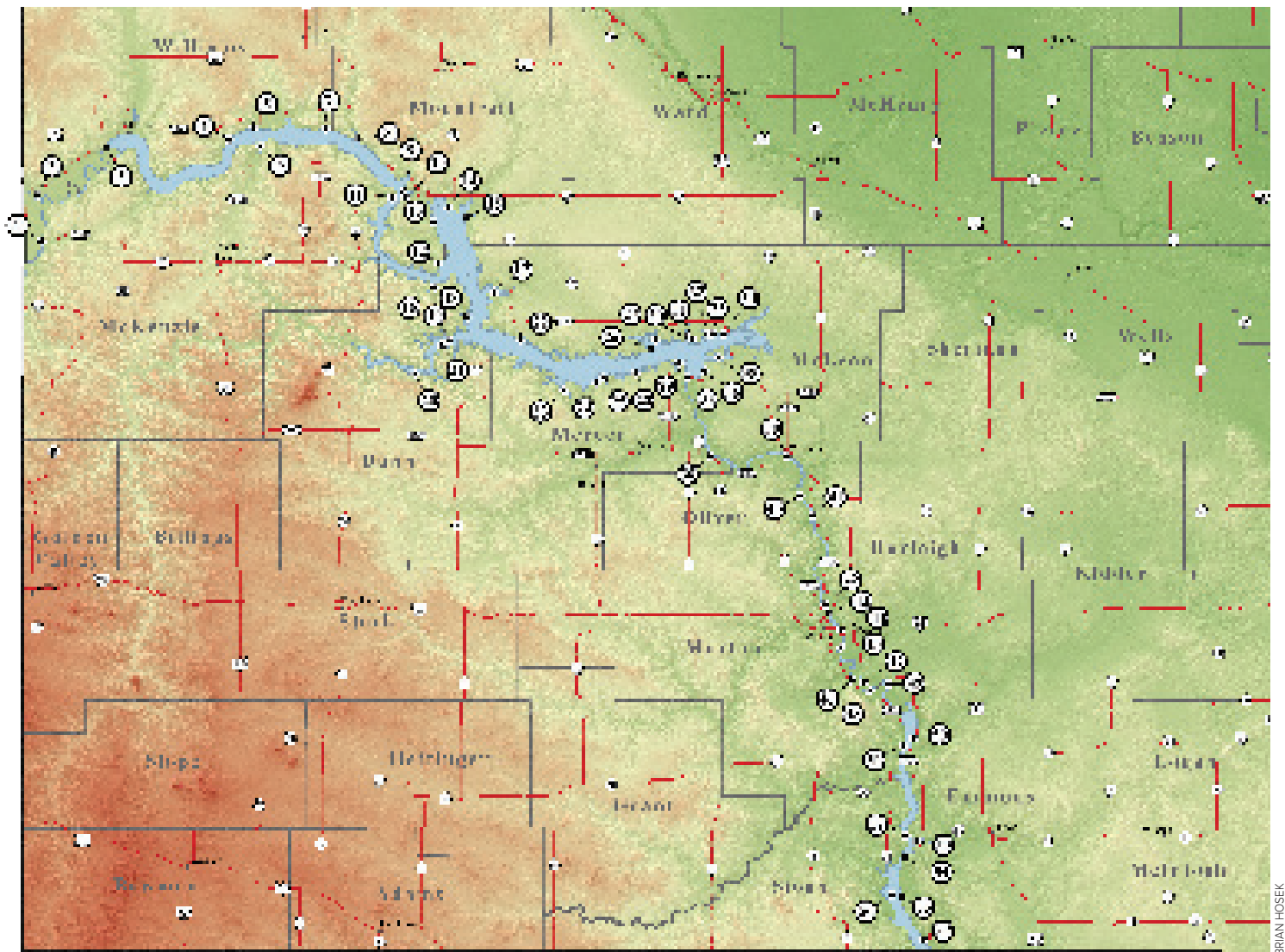
26 DOUGLAS CREEK BAY – 11 miles west of Garrison on ND Highway 37, 5 miles south, 5 miles east to corps ramp or 11 miles west of Garrison on ND Highway 37, 2 miles south, 1 mile east, 1 mile south to county ramp. Gravel access road, primitive camping, trash receptacles – U.S. Army Corps of Engineers/McLean County Park Board.

27 CAMP OF THE CROSS – 4 miles west, 1.5 miles south, 1 mile west, 1 mile south, 1 mile west, .5 miles south of Garrison. Gravel access road, no restrooms – Camp of the Cross.

28 HAZEN BAY – 14 miles north of Hazen. Paved access road, fish cleaning facility, developed and primitive camping, security lights, picnic shelter, trash receptacles, concession, lodging, RV dump station – Hazen City Park Board.

29 LAKE SAKAKAWEA STATE PARK – Just east and north of Pick City. Paved access road, fish cleaning facility, developed and primitive camping, security lights, picnic shelter, trash receptacles, concession, lodging, boat rental, access fee, RV dump station – North Dakota Parks and Recreation.

30 GARRISON CREEK – 2 miles west of Garrison on ND Highway 37, 3 miles south, 1 mile east. Gravel access road, no restrooms – Garrison Cabin Association.



BRIAN HOSEK

31 FORT STEVENSON STATE PARK – 3 miles south of Garrison. Paved access road, fish cleaning facility, developed and primitive camping, security lights, picnic shelter, trash receptacles, concession, lodging, boat rental, access fee, RV dump station – North Dakota Parks and Recreation.

32 STEINKE BAY – 3 miles west of the junction of ND Highway 37 and U.S. Highway 83, then 2 miles south. Gravel access road, primitive camping – North Dakota Game and Fish Department.

33 SPORTSMENS CENTENNIAL PARK – 1 mile west of the junction of ND Highway 37 and U.S. Highway 83, then 2 miles south, 1 mile west. Gravel access road, fish cleaning facility, developed and primitive camping, security lights, picnic shelter, trash receptacles, concession – McLean County Park Board.

34 WEST TOTTEN TRAIL – 7 miles north of Coleharbor on U.S. Highway 83, then .5 miles west, or 2 miles south of the junction of U.S. Highway 83 and ND Highway 37, then .5 miles west. Gravel access road – McLean County Park Board.

35 WOLF CREEK – 1 mile east of Riverdale on ND Highway 200, then 2 miles north, 1 mile east, 1 mile north, .5 miles

east. Gravel access road, fish cleaning facility, primitive camping, security lights, picnic shelter, trash receptacles, RV dump station – U.S. Army Corps of Engineers.

36 GOVERNMENT BAY – Just north of Riverdale. Paved access road, fish cleaning facility, developed and primitive camping, security lights, trash receptacles – U.S. Army Corps of Engineers.

37 GARRISON DAM TAILRACE – Directly below Garrison Dam. Paved access road, fish cleaning facility, developed camping, security lights, trash receptacles – U.S. Army Corps of Engineers.

38 UPA SITE (STANTON) – Just west of UPA Power Plant on ND Highway 200A near Stanton. Paved access road, security lights, trash receptacles – City of Stanton.

39 WASHBURN – On east side of the Missouri River near Washburn, north of ND Highway 200A bridge. Paved access road, fish cleaning facility, primitive camping, security lights, trash receptacles, RV dump station – Washburn City Park Board.

40 SANGER (CROSS RANCH) – Just east of Sanger townsite on west side of Missouri River. Gravel access road, primitive camping, picnic shelter, trash receptacles – North Dakota Parks and Recreation.

41 STECKEL BOAT LANDING (WILTON) – 22 miles north of Bismarck on ND Highway 1804, or 5.5 miles west, 1 mile south, and 1.5 miles west of junction of U.S. Highway 83 and ND Highway 36. Paved access road, primitive camping, picnic shelter, trash receptacles – Burleigh County Park Board.

42 HOGE LANDING – On east side of the Missouri River near Bismarck, 6.4 miles north of I-94 bridge on River Road, then .7 miles west and 1.5 miles south/southwest. Gravel access road, picnic shelter, trash receptacles – Bismarck Parks and Recreation.

43 KNIEFEL (MISTY WATERS) LANDING – On east side of the Missouri River near Bismarck, 3 miles north of I-94 bridge on River Road, then 1 mile west. Paved access road, fish cleaning facility, security lights, picnic shelter, trash receptacles, concession – Burleigh County Park Board.

44 GRANT MARSH BRIDGE – On east side of the Missouri River near Bismarck, south side of the I-94 bridge on River Road. Paved access road, security lights, trash receptacles – Bismarck Parks and Recreation.

45 FOX ISLAND PARK – From Washington Street, .75 miles west on Riverwood Drive (1 block south of Expressway), 1.5 miles south and .5 miles west. Paved access road, fish cleaning facility, security lights, trash receptacles – Bismarck Parks and Recreation.

46 LITTLE HEART BOTTOMS (SCHMIDT) – 11 miles south of Mandan on ND Highway 1806, then 1 mile north. Paved access road, trash receptacles – Morton County Park Board.

47 KIMBALL BOTTOMS (DESERT) – 8 miles south of Bismarck on ND Highway 1804, then 2 miles south. Paved access road, primitive camping, picnic shelter, trash receptacles – Burleigh County Park Board.

48 GRANER BOTTOMS (SUGAR LOAF) – 19 miles south of Mandan on ND Highway 1806, then 1 mile east, or about 3 miles north of Huff. Paved access road, fish cleaning facility, developed and primitive camping, security lights, picnic shelter, trash receptacles, RV dump station – Morton County Park Board.

49 MACLEAN BOTTOMS (GUN RANGE) – 14 miles south of Bismarck on ND Highway 1804, then 2 miles south. Paved access road, picnic shelter, trash receptacles – Burleigh County Park Board.

50 HAZELTON – 31 miles southeast of Bismarck on ND Highway 1804 or 13 miles west and 2 miles north of Hazelton. Paved access road, developed and primitive camping, security lights, picnic shelter, trash receptacles – U.S. Army Corps of Engineers.

51 FORT RICE – 28 miles south of Mandan on ND Highway 1806, then .5 miles east. Paved access road, fish cleaning facility, primitive camping, security lights, picnic shelter, trash receptacles – Morton County Park Board.

52 PRAIRIE KNIGHTS MARINA – 10 miles south of the Cannonball River on ND Highway 1806, then 3.5 miles east. Gravel access road, fish cleaning facility, developed and primitive camping, security lights, picnic shelter, trash receptacles, lodging, RV dump station – Prairie Knights Casino.

53 BEAVER BAY – 13 miles west of Linton on ND Highway 13, then 2 miles south on ND Highway 1804. Paved access road, fish cleaning facility, developed and primitive camping, security lights, picnic shelter, trash receptacles, concession, RV dump station – U.S. Army Corps of Engineers.

54 JENNERVILLE (RIVERY) – 13 miles west of Linton on ND Highway 13, then 6.5 miles south on ND Highway 1804, and 3.5 miles west at Rivery turnoff. Gravel access road, no restrooms, no courtesy docks – U.S. Army Corps of Engineers.

55 CATTAIL BAY (WINONA) – 10 miles west of Strasburg, 1 mile south, 7 miles west, 1 mile north on ND Highway 1804, 2 miles west, 2 miles south, 1 mile west. Gravel access road, primitive camping, trash receptacles, concession – U.S. Army Corps of Engineers.

56 FORT YATES – North edge of Fort Yates. Paved access road, primitive camping, picnic shelter, trash receptacles – Standing Rock Sioux Tribe.

57 LANGELIERS BAY – 10 miles west of Strasburg, 1 mile south, 7 miles west, 11 miles south on ND Highway 1804, and .75 miles west. Paved access road, fish cleaning facility, primitive camping, security lights, trash receptacles – Emmons County Park Board.



TOP WHOPPER

2024

Walleye – 14 pounds, 8 ounces, Lake Sakakawea; 13-0, Boom Lake (Marion Lake); 11-14, Missouri River; 11-6, Heart River; 11-5, Devils Lake.

Northern Pike – 25-14, Devils Lake; 23-2, Lake Sakakawea; 22-12, Lake Sakakawea; 21-8, Missouri River; 21-4, Missouri River.

Yellow Perch – 2-6, Logan Lake; 2-6, Devils Lake; 2-3, Mallard Marsh North; 2-0, Devils Lake; 1-15, Brooks Complex; 1-15, Brooks Complex.

Smallmouth Bass – 5-0, Lake Audubon; 5-0, Lake Ashtabula; 4-10, Loon Lake; 4-3, Lake Darling; 4-2, Lake Darling.

Largemouth Bass – 8-4, Fish Creek Dam; 6-11, Harmon Lake.

White Bass – 3-5, Devils Lake.

Chinook Salmon – 12-9, Missouri River; 12-3, Missouri River.

Rainbow Trout – 7-4, Missouri River; 6-15, Missouri River; 5-7, Missouri River.

Brown Trout – 19-0, Missouri River; 7-14, Missouri River.

Crappie – 2-3, Jamestown Reservoir; 2-1, Heart Butte Reservoir; 1-14, Devils Lake; 1-11, Sweet Briar Lake.

Bluegill – 1-6, Lake Gertie; 1-4, North Golden Lake.

Channel Catfish – 18-0, Red River.

Buffalo – 26-10, Jamestown Reservoir; 26-8, Missouri River; 23-15, Missouri River; 23-0, Missouri River; 21-8, Missouri River.

Bullhead – 4-9, Devils Lake; 2-13, Pipestem Reservoir; 2-7, Pipestem Reservoir; 2-6, Pipestem Reservoir; 2-5, Pipestem Reservoir.

Burbot – 11-14, Missouri River; 10-0, Missouri River; 9-12, Missouri River.

Cisco – 2-7, Lake Sakakawea.

Common Carp – 17-8, Long Lake; 17-1, Missouri River.

Freshwater Drum – 9-0, Lake Audubon; 7-14, James River.

Goldeye – 3-12, McClusky Canal.

Lake Whitefish – 7-3, Missouri River; 4-15, Missouri River; 4-12, Missouri River.

Paddlefish – 131-0, Yellowstone River; 118-0, Missouri River; 117-0, Missouri River; 105-0, Missouri River; 104-0, Missouri River.

BACKCAST *RW*



Fishing with girls. *This is something I've done little of – compared to the hours spent casting, wading and trolling in the company of guys – which is a darn shame. I don't remember ever fishing with either sister, having my older sibling bait my hook as a kid or later having to piggyback my curly-haired kid sister across a creek.*

I wrote those 59 words 20 years ago. They wouldn't hold water today.

A year ago, with spring finally feeling like it was going to stick around, I watched as my daughter, wading knee-deep in 65-degree weather, worked a pretty piece of water in a creek new to both of us. Between drifts, as her line navigated its way downstream at a pace slower than a walk, I waited for her to lift her rod tip and watch it dance ... again.

Fish on.

After she released the trout back into the creek, I gave her a high-five but joked that a hip-check into the deep end was coming if she didn't start sharing the love.

While she'd likely swear that she sent good vibes my way, they whistled by without connection, like the acrobatic swallows avoiding contact with the nearby wooden footbridge while dipping and diving in pursuit of airborne bugs.

Back at our vehicle where we removed wet wading boots, broke down our rods and stored gear, I was needed by Lauren about not catching any fish, but she eventually softened her mild ribbing by promising to buy me dinner.

Fair enough.

I hitched a ride with my daughter to the Black Hills because she had work to do in a real job that guides her to mostly far-flung places across the country that requires air travel and the don't-hold-your-breath promise that you'll make it to your destination on time. A road trip to the Black Hills, a four-wheels-on-the-ground journey through interesting looking country, sounded much more appealing when she offered, especially when the promise of a little fishing was thrown in while we waited for the weather to turn around at home.

Since I wrote those 59 words to begin this piece 20 years ago, Lauren and I have fished together many times. I can say I've fished with a girl, have been out-fished by a young woman on a pretty trout stream that I'd like another crack at.

I also wrote years ago that it was never a deliberate decision to make our daughter – the middle child sandwiched between two boys – into an angler to make up for what I missed with my sisters and mom. My thinking just isn't that deep. Instead, it was simply a matter of putting a fishing rod in her hands and hoping it was something that would stick.

And it has.

For the last few years, I've lived vicariously through her, with more than a touch of envy, as she has texted photos of her solo fishing trips to waters I figured I'd eventually get around to fishing but have only just read about.

As her travels continue, I'm expecting another invite because, well, she knows I owe her a dinner.

RON WILSON is editor of North Dakota OUTDOORS.



North Dakota Outdoors Magazine
North Dakota Game and Fish Department
100 N. Bismarck Expressway
Bismarck, ND 58501

To renew your subscription or change
your address, call 701-328-6300 or
go to gf.nd.gov/buy-apply.



Drew Johnson, North Dakota Game and Fish Department warden out of Finley, checks an angler's catch while patrolling Devils Lake in 2024.

PHOTO BY ASHLEY PETERSON

connect with us

gf.nd.gov/connect



YouTube

